


# Anti-Inhibin alpha antibody [EPY2782] ab81322

**重组 RabMAb**

**1 References** **2 图像**

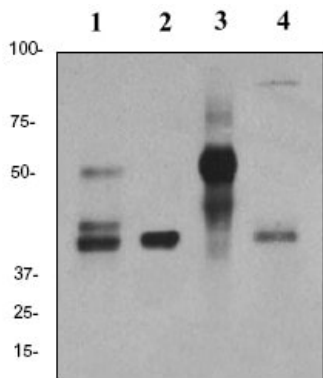
### 概述

<b>产品名称</b>	Anti-Inhibin alpha抗体[EPY2782]
<b>描述</b>	兔单克隆抗体[EPY2782] to Inhibin alpha
<b>宿主</b>	Rabbit
<b>特异性</b>	Note: 20/23 kDa bands consist of the mature alpha chain. 50/53 kDa bands are the entire proprotein.
<b>经测试应用</b>	<b>适用于:</b> WB <b>不适用于:</b> IHC-P or IP
<b>种属反应性</b>	<b>与反应:</b> Human <b>预测可用于:</b> Mouse, Rat 
<b>免疫原</b>	Synthetic peptide within Human Inhibin alpha aa 1-100 (N terminal). The exact sequence is proprietary. Database link: <a href="#">P05111</a>
<b>阳性对照</b>	Human Adrenal gland, HeLa, Human placenta and LNCaP lysates.
<b>常规说明</b>	This product is a recombinant monoclonal antibody, which offers several advantages including: <ul style="list-style-type: none"> <li>- High batch-to-batch consistency and reproducibility</li> <li>- Improved sensitivity and specificity</li> <li>- Long-term security of supply</li> <li>- Animal-free production</li> </ul> For more information <a href="#">see here</a> . Our RabMAb <sup>®</sup> technology is a patented hybridoma-based technology for making rabbit monoclonal antibodies. For details on our patents, please refer to <a href="#">RabMAb<sup>®</sup> patents</a> .

### 性能

<b>形式</b>	Liquid
<b>存放说明</b>	Shipped at 4°C. Store at -20°C. Stable for 12 months at -20°C.
<b>存储溶液</b>	pH: 7.20 Preservative: 0.01% Sodium azide Constituents: 9% PBS, 40% Glycerol (glycerin, glycerine), 0.05% BSA, 50% Tissue culture supernatant





Western blot - Anti-Inhibin alpha antibody [EPY2782] (ab81322)

**All lanes** : Anti-Inhibin alpha antibody [EPY2782] (ab81322) at 1/2000 dilution

**Lane 1** : Human Adrenal gland lysate

**Lane 2** : HeLa cell lysate

**Lane 3** : Human placenta lysate

**Lane 4** : LNCaP lysate

Lysates/proteins at 10 µg per lane.

**Secondary**

**All lanes** : HRP goat anti rabbit at 1/2000 dilution

**Predicted band size:** 40 kDa

**Observed band size:** 40,50 kDa

**Additional bands at:** 42 kDa. We are unsure as to the identity of these extra bands.

Note: the 50 kDa band corresponds to the entire proprotein.

Why choose a recombinant antibody?

 <b>Research with confidence</b> Consistent and reproducible results	 <b>Long-term and scalable supply</b> Recombinant technology
 <b>Success from the first experiment</b> Confirmed specificity	 <b>Ethical standards compliant</b> Animal-free production

Anti-Inhibin alpha antibody [EPY2782] (ab81322)

**Please note:** All products are "FOR RESEARCH USE ONLY. NOT FOR USE IN DIAGNOSTIC PROCEDURES"

**Our Abpromise to you: Quality guaranteed and expert technical support**

- Replacement or refund for products not performing as stated on the datasheet
- Valid for 12 months from date of delivery
- Response to your inquiry within 24 hours
  
- We provide support in Chinese, English, French, German, Japanese and Spanish
- Extensive multi-media technical resources to help you
- We investigate all quality concerns to ensure our products perform to the highest standards

If the product does not perform as described on this datasheet, we will offer a refund or replacement. For full details of the Abpromise, please visit <https://www.abcam.cn/abpromise> or contact our technical team.

### **Terms and conditions**

---

- Guarantee only valid for products bought direct from Abcam or one of our authorized distributors