

Anti-Importin subunit alpha antibody [EPR26346-53] ab307438

重组 RabMAb

13 图像

概述

产品名称	Anti-Importin subunit alpha抗体[EPR26346-53]
描述	兔单克隆抗体[EPR26346-53] to SRP1
宿主	Rabbit
特异性	Unsuitable for mouse and rat IHC-P.
经测试应用	适用于: Flow Cyt (Intra), WB, ICC/IF, IHC-P, IP
种属反应性	与反应: Mouse, Rat, Human
免疫原	Recombinant fragment. This information is proprietary to Abcam and/or its suppliers.
阳性对照	WB: Mouse and rat brain tissue lysate. NIH/3T3, HepG2, Jurkat and HeLa whole cell lysate. Human cerebellum, heart and kidney tissue lysate. ICC/IF: HeLa and NIH/3T3 cells. Flow Cyt (Intra): HepG2 and NIH/3T3 cells. IHC-P: Human breast and breast cancer tissue. Human colorectal adenocarcinoma. IP: HepG2 whole cell lysate.
常规说明	<p>This product is a recombinant monoclonal antibody, which offers several advantages including:</p> <ul style="list-style-type: none"> - High batch-to-batch consistency and reproducibility - Improved sensitivity and specificity - Long-term security of supply - Animal-free production <p>For more information see here.</p> <p>Our RabMAb[®] technology is a patented hybridoma-based technology for making rabbit monoclonal antibodies. For details on our patents, please refer to RabMAb[®] patents.</p>

性能

形式	Liquid
存放说明	Shipped at 4°C. Store at +4°C short term (1-2 weeks). Upon delivery aliquot. Store at -20°C long term. Avoid freeze / thaw cycle.
存储溶液	<p>pH: 7.20</p> <p>Preservative: 0.01% Sodium azide</p> <p>Constituents: 59% PBS, 40% Glycerol (glycerin, glycerine), 0.05% BSA</p>
纯度	Protein A purified
克隆	单克隆

Trp and Asn residues of the corresponding third helices (H3) of ARM repeats which mainly contribute to binding.

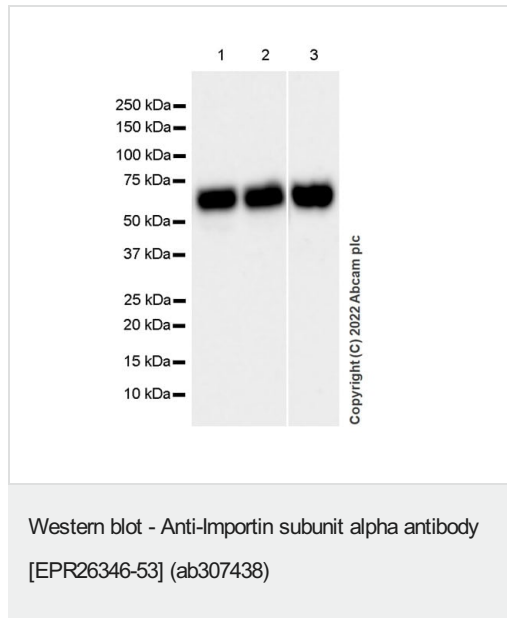
翻译后修饰

Polyubiquitinated in the presence of RAG1 (in vitro).

细胞定位

Cytoplasm. Nucleus.

图片



All lanes : Anti-Importin subunit alpha antibody [EPR26346-53] (ab307438) at 1/1000 dilution

Lane 1 : Mouse brain tissue lysate

Lane 2 : Rat brain tissue lysate

Lane 3 : NIH/3T3 (mouse embryonic fibroblast) whole cell lysate

Lysates/proteins at 20 µg per lane.

Secondary

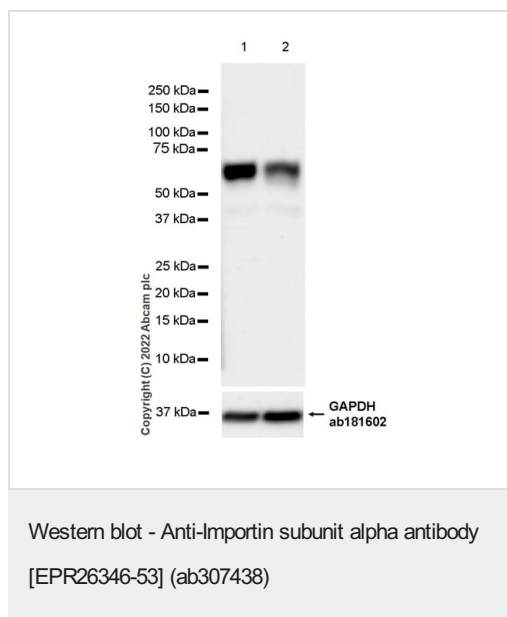
All lanes : Goat Anti-Rabbit IgG H&L (HRP) ([ab97051](#)) at 1/100000 dilution

Predicted band size: 60 kDa

Observed band size: 60 kDa

Blocking and diluting buffer and concentration: 5% NFDN/TBST.

Exposure time: 37 seconds.



All lanes : Anti-Importin subunit alpha antibody [EPR26346-53] (ab307438) at 1/1000 dilution

Lane 1 : HeLa (human cervix adenocarcinoma epithelial cell) transfected with scrambled siRNA control whole cell lysate

Lane 2 : HeLa transfected with siRNA specifically targeting SRP1 whole cell lysate

Lysates/proteins at 20 µg per lane.

Secondary

All lanes : Goat Anti-Rabbit IgG H&L (HRP) ([ab97051](#)) at 1/100000 dilution

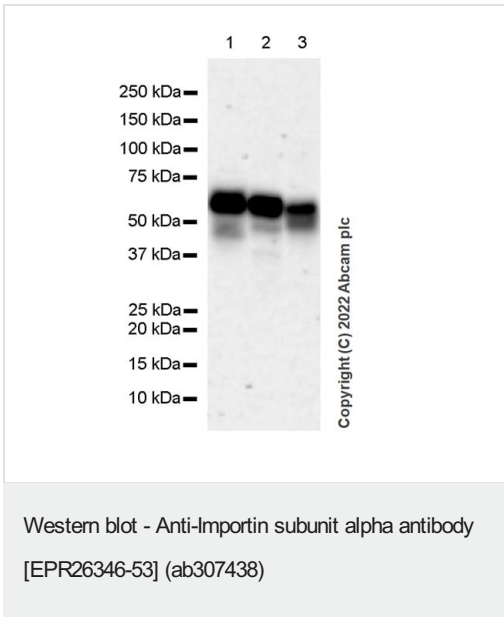
Predicted band size: 60 kDa

Observed band size: 60 kDa

Blocking and diluting buffer and concentration: 5% NFDm/TBST.

In Western blot, anti-GAPDH antibody ([ab181602](#)) loading control staining at 1/200000 dilution.

Exposure time: 39 seconds.



All lanes : Anti-Importin subunit alpha antibody [EPR26346-53] (ab307438) at 1/1000 dilution

Lane 1 : Human cerebellum tissue lysate

Lane 2 : Human heart tissue lysate

Lane 3 : Human kidney tissue lysate

Lysates/proteins at 20 µg per lane.

Secondary

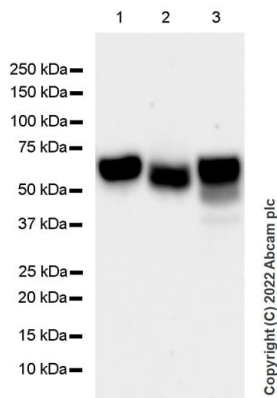
All lanes : Goat Anti-Rabbit IgG H&L (HRP) ([ab97051](#)) at 1/100000 dilution

Predicted band size: 60 kDa

Observed band size: 60 kDa

Blocking and diluting buffer and concentration: 5% NFDm/TBST.

Exposure time: 147 seconds.



Western blot - Anti-Importin subunit alpha antibody [EPR26346-53] (ab307438)

All lanes : Anti-Importin subunit alpha antibody [EPR26346-53] (ab307438) at 1/1000 dilution

Lane 1 : HeLa (human cervical adenocarcinoma epithelial cell) whole cell lysate

Lane 2 : HepG2 (human hepatocellular carcinoma epithelial cell) whole cell lysate

Lane 3 : Jurkat (human T cell leukemia T lymphocyte from peripheral blood) whole cell lysate

Lysates/proteins at 20 µg per lane.

Secondary

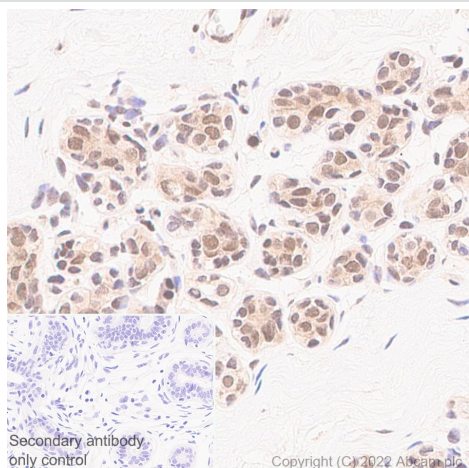
All lanes : Goat Anti-Rabbit IgG H&L (HRP) ([ab97051](#)) at 1/100000 dilution

Predicted band size: 60 kDa

Observed band size: 60 kDa

Blocking and diluting buffer and concentration: 5% NFDm/TBST.

Exposure time: 26 seconds.



Immunohistochemistry (Formalin/PFA-fixed paraffin-embedded sections) - Anti-Importin subunit alpha antibody [EPR26346-53] (ab307438)

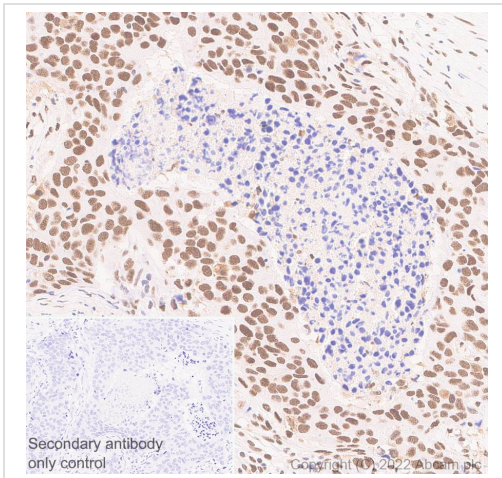
Immunohistochemical analysis of paraffin-embedded human breast tissue labeling Importin subunit alpha with ab307438 at 1/2000 dilution (0.251 µg/ml) followed by ready to use LeicaDS9800 (Bond® Polymer Refine Detection).

Positive staining on human breast (PMID: 34709479).

The section was incubated with ab307438 for 30 mins at room temperature. The immunostaining was performed on a Leica Biosystems BOND® RX instrument. Counterstained with Hematoxylin.

Secondary antibody only control: Secondary antibody is ready to use LeicaDS9800 (Bond® Polymer Refine Detection).

Heat mediated antigen retrieval was performed with Tris-EDTA buffer (pH 9.0, Epitope Retrieval Solution2) for 20 mins.



Immunohistochemistry (Formalin/PFA-fixed paraffin-embedded sections) - Anti-Importin subunit alpha antibody [EPR26346-53] (ab307438)

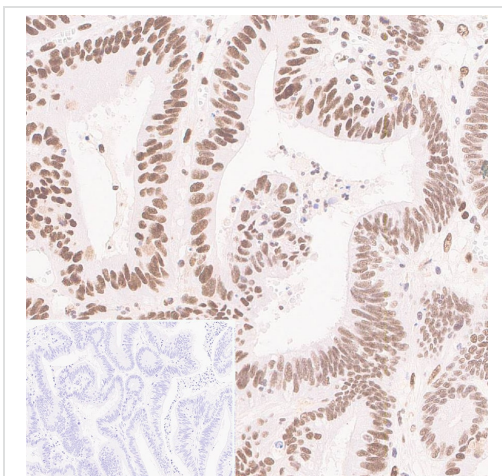
Immunohistochemical analysis of paraffin-embedded human breast cancer tissue labeling Importin subunit alpha with ab307438 at 1/2000 dilution (0.251 ug/ml) followed by ready to use LeicaDS9800 (Bond® Polymer Refine Detection).

Positive staining on human breast cancer (PMID: 34709479).

The section was incubated with ab307438 for 30 mins at room temperature. The immunostaining was performed on a Leica Biosystems BOND® RX instrument. Counterstained with Hematoxylin.

Secondary antibody only control: Secondary antibody is ready to use LeicaDS9800 (Bond® Polymer Refine Detection).

Heat mediated antigen retrieval was performed with Tris-EDTA buffer (pH 9.0, Epitope Retrieval Solution2) for 20 mins.



Immunohistochemistry (Formalin/PFA-fixed paraffin-embedded sections) - Anti-Importin subunit alpha antibody [EPR26346-53] (ab307438)

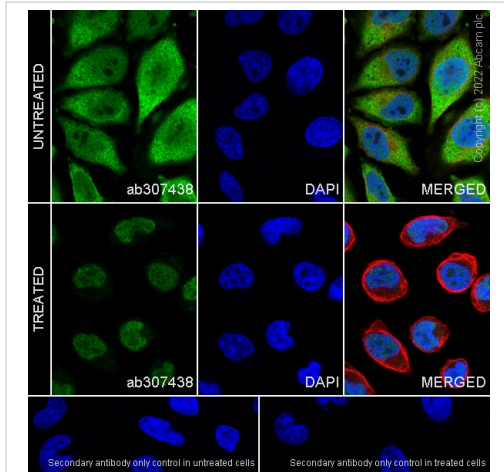
Immunohistochemical analysis of paraffin-embedded human colorectal adenocarcinoma tissue labeling Importin subunit alpha with ab307438 at 1/2000 dilution (0.251 ug/ml) followed by ready to use LeicaDS9800 (Bond® Polymer Refine Detection).

Positive staining on human colorectal adenocarcinoma.

The section was incubated with ab307438 for 30 mins at room temperature. The immunostaining was performed on a Leica Biosystems BOND® RX instrument. Counterstained with Hematoxylin.

Secondary antibody only control: Secondary antibody is ready to use LeicaDS9800 (Bond® Polymer Refine Detection).

Heat mediated antigen retrieval was performed with Tris-EDTA buffer (pH 9.0, Epitope Retrieval Solution2) for 20 mins.



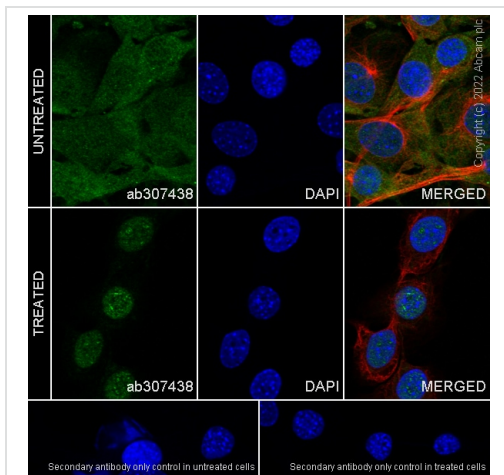
Immunocytochemistry/ Immunofluorescence - Anti-Importin subunit alpha antibody [EPR26346-53] (ab307438)

Immunofluorescent analysis of 4% Paraformaldehyde-fixed, 0.1% Triton X-100 permeabilized HeLa (human cervical adenocarcinoma epithelial cell) cells labelling Importin subunit alpha with ab307438 at 1/50 dilution (10.02 ug/ml) followed by **ab150081** Goat Anti-Rabbit IgG H&L (Alexa Fluor® 488) preadsorbed antibody at 1/1000 dilution (2 ug/ml) (Green).

Confocal image showing cytoplasmic and nuclear staining in untreated HeLa cells, and the signals were translocated to nucleus in HeLa cells after treatment with heat shock (45.5°C) for 1.5 h.

Image was taken with a confocal microscope (Leica-Microsystems, TCS SP8). **ab195889** Anti-alpha Tubulin mouse monoclonal antibody - Microtubule Marker (Alexa Fluor® 594) was used to counterstain tubulin at 1/200 dilution (2.5 ug/ml) (Red). The nuclear counterstain was DAPI (Blue).

Secondary antibody only control: Secondary antibody is **ab150081** Goat Anti-Rabbit IgG H&L (Alexa Fluor® 488) preadsorbed at 1/1000 dilution (2 ug/ml).



Immunocytochemistry/ Immunofluorescence - Anti-Importin subunit alpha antibody [EPR26346-53] (ab307438)

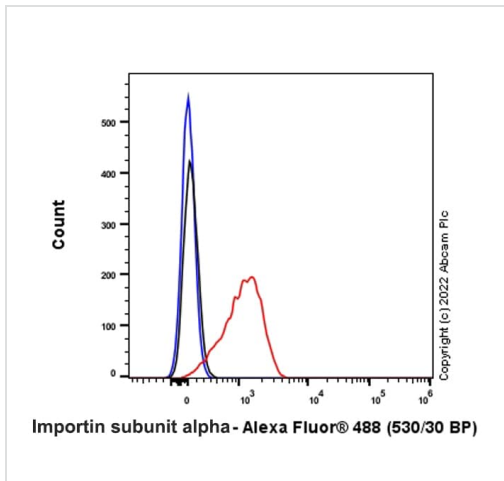
Immunofluorescent analysis of 4% Paraformaldehyde-fixed, 0.1% Triton X-100 permeabilized NIH/3T3 (mouse embryonic fibroblast) cells labelling Importin subunit alpha with ab307438 at 1/50 dilution (10.02 ug/ml) followed by **ab150081** Goat Anti-Rabbit IgG H&L (Alexa Fluor® 488) preadsorbed antibody at 1/1000 dilution (2 ug/ml) (Green).

Confocal image showing cytoplasmic and nuclear staining in untreated NIH/3T3 cells, and the signals were translocated to nucleus in NIH/3T3 cells after treatment with heat shock (45.5°C) for 1.5 h.

Image was taken with a confocal microscope (Leica-Microsystems, TCS SP8). **ab195889** Anti-alpha Tubulin mouse monoclonal antibody - Microtubule Marker (Alexa Fluor® 594) was used to counterstain tubulin at 1/200 dilution (2.5 ug/ml) (Red). The nuclear counterstain was DAPI (Blue).

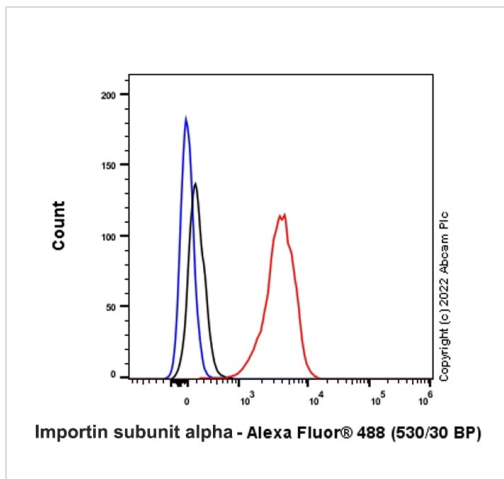
Secondary antibody only control: Secondary antibody is **ab150081**

Goat Anti-Rabbit IgG H&L (Alexa Fluor® 488) preadsorbed at 1/1000 dilution (2 ug/ml).



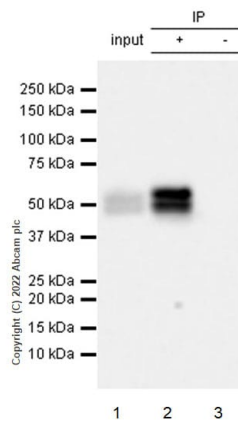
Flow Cytometry (Intracellular) - Anti-Importin subunit alpha antibody [EPR26346-53] (ab307438)

Flow cytometric analysis of 4% paraformaldehyde fixed 90% methanol permeabilized HepG2 (human hepatocellular carcinoma epithelial cell) cells labelling Importin subunit alpha with ab307438 at 1/500 dilution (0.1ug) (Red) compared with a Rabbit monoclonal IgG (**ab172730**) (Black) isotype control and an unlabelled control (cells without incubation with primary antibody and secondary antibody) (Blue). A Goat Anti-Rabbit IgG (Alexa Fluor® 488, **ab150081**) at 1/2000 dilution was used as the secondary antibody.



Flow Cytometry (Intracellular) - Anti-Importin subunit alpha antibody [EPR26346-53] (ab307438)

Flow cytometric analysis of 4% paraformaldehyde fixed 90% methanol permeabilized NIH/3T3 (mouse embryonic fibroblast) cells labelling Importin subunit alpha with ab307438 at 1/500 dilution (0.1ug) (Red) compared with a Rabbit monoclonal IgG (**ab172730**) (Black) isotype control and an unlabelled control (cells without incubation with primary antibody and secondary antibody) (Blue). A Goat Anti-Rabbit IgG (Alexa Fluor® 488, **ab150081**) at 1/2000 dilution was used as the secondary antibody.



Immunoprecipitation - Anti-Importin subunit alpha antibody [EPR26346-53] (ab307438)

Importin subunit alpha was immunoprecipitated from 0.35 mg HepG2 (human hepatocellular carcinoma epithelial cell) whole cell lysate with ab307438 at 1/30 dilution (2ug in 0.35mg lysates). Western blot was performed on the immunoprecipitate using ab307438 at 1/1000 dilution. VeriBlot for IP secondary antibody(HRP)(**ab131366**) was used at 1/5000 dilution.

Lane 1: HepG2 whole cell lysate 10ug

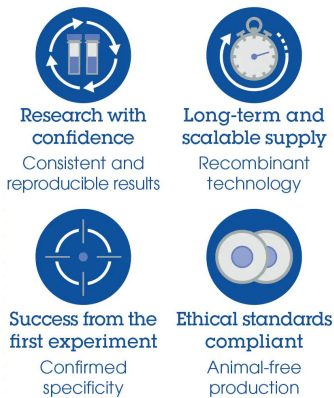
Lane 2: ab307438 IP in HepG2 whole cell lysate

Lane 3: Rabbit monoclonal IgG (**ab172730**) instead of ab307438 in HepG2 whole cell lysate

Blocking and dilution buffer and concentration: 5% NFDN/TBST.

Exposure time: 10 seconds.

Why choose a recombinant antibody?



Anti-Importin subunit alpha antibody [EPR26346-53] (ab307438)

Please note: All products are "FOR RESEARCH USE ONLY. NOT FOR USE IN DIAGNOSTIC PROCEDURES"

Our Abpromise to you: Quality guaranteed and expert technical support

- Replacement or refund for products not performing as stated on the datasheet
- Valid for 12 months from date of delivery
- Response to your inquiry within 24 hours
- We provide support in Chinese, English, French, German, Japanese and Spanish
- Extensive multi-media technical resources to help you
- We investigate all quality concerns to ensure our products perform to the highest standards

If the product does not perform as described on this datasheet, we will offer a refund or replacement. For full details of the Abpromise, please visit <https://www.abcam.cn/abpromise> or contact our technical team.

Terms and conditions

- Guarantee only valid for products bought direct from Abcam or one of our authorized distributors