


Anti-IMPACT antibody ab95175

2 图像

概述

产品名称	Anti-IMPACT抗体
描述	兔多克隆抗体to IMPACT
宿主	Rabbit
经测试应用	适用于: WB, IP
种属反应性	与反应: Human 预测可用于: Chimpanzee, Orangutan 
免疫原	Synthetic peptide, corresponding to a region within amino acids 270-320 (GILLGPDRFK HINNCARNIL VEKNYTNSPE ESKALGKNK KVRKDKKRNE H) of Human IMPACT (NP_060909.1). Run BLAST with Expasy Run BLAST with NCBI
阳性对照	HeLa and 293T whole cell lysates
常规说明	<p>The Life Science industry has been in the grips of a reproducibility crisis for a number of years. Abcam is leading the way in addressing this with our range of recombinant monoclonal antibodies and knockout edited cell lines for gold-standard validation. Please check that this product meets your needs before purchasing.</p> <p>If you have any questions, special requirements or concerns, please send us an inquiry and/or contact our Support team ahead of purchase. Recommended alternatives for this product can be found below, along with publications, customer reviews and Q&As</p>

性能

形式	Liquid
存放说明	Shipped at 4°C. Upon delivery aliquot and store at -20°C. Avoid freeze / thaw cycles.
存储溶液	pH: 7 Preservative: 0.09% Sodium azide Constituent: Tris citrate/phosphate
纯度	Immunogen affinity purified
纯化说明	ab95175 was affinity purified using an epitope specific to IMPACT immobilized on solid support.
克隆	多克隆
同种型	IgG

应用

The Abpromise guarantee **Abpromise™** 承诺保证使用 ab95175 于以下的经测试应用

“应用说明”部分 下显示的仅为推荐的起始稀释度;实际最佳的稀释度/浓度应由使用者检定。

应用	Ab评论	说明
WB		1/2000 - 1/10000. Predicted molecular weight: 36 kDa.
IP		Use at 2-5 µg/mg of lysate.

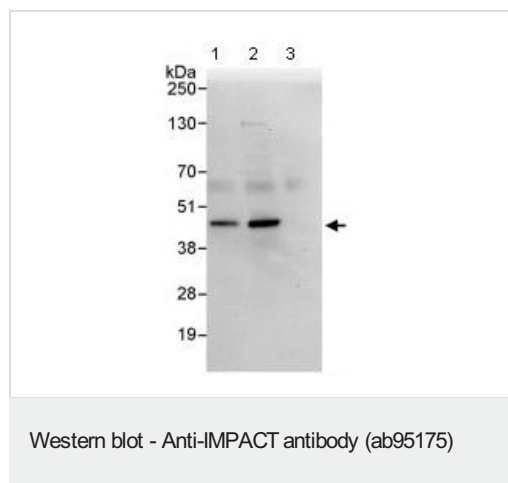
靶标

功能 Translational regulator that ensures constant high levels of translation under amino acid starvation. Acts by interacting with GCN1/GCN1L1, thereby preventing activation of GCN2 protein kinases (EIF2AK1 to 4) and subsequent down-regulation of protein synthesis.

组织特异性 Widely expressed. Expressed at high level in brain.

序列相似性 Belongs to the IMPACT family.
Contains 1 RWD domain.

图片



All lanes : Anti-IMPACT antibody (ab95175) at 0.4 µg/ml

Lane 1 : HeLa whole cell lysate at 50 µg

Lane 2 : HeLa whole cell lysate at 15 µg

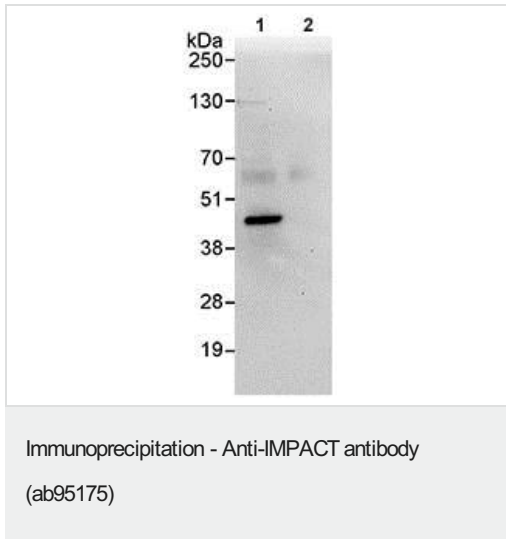
Lane 3 : HeLa whole cell lysate at 5 µg

Lane 4 : 293T whole cell lysate at 50 µg

Developed using the ECL technique.

Predicted band size: 36 kDa

Exposure time: 30 seconds



Detection of IMPACT in immunoprecipitates of HeLa whole cell lysates (1 mg for IP, 20% of IP loaded) using ab95175 at 3 µg/mg lysate for IP (Lane 1) and at 1 µg/ml for subsequent Western blot detection. Lane 2 represents control IgG IP.

Detection: Chemiluminescence with an exposure time of 30 seconds.

All lanes : Anti-IMPACT antibody (ab95175) at 0.4 µg/ml

Lane 1 : IP with IMPACT antibody

Lane 2 : IP with ab95175

Lane 3 : IP with control IgG

Please note: All products are "FOR RESEARCH USE ONLY. NOT FOR USE IN DIAGNOSTIC PROCEDURES"

Our Abpromise to you: Quality guaranteed and expert technical support

- Replacement or refund for products not performing as stated on the datasheet
- Valid for 12 months from date of delivery
- Response to your inquiry within 24 hours
- We provide support in Chinese, English, French, German, Japanese and Spanish
- Extensive multi-media technical resources to help you
- We investigate all quality concerns to ensure our products perform to the highest standards

If the product does not perform as described on this datasheet, we will offer a refund or replacement. For full details of the Abpromise, please visit <https://www.abcam.cn/abpromise> or contact our technical team.

Terms and conditions

- Guarantee only valid for products bought direct from Abcam or one of our authorized distributors