

Anti-ILF1 antibody ab5298

7 References **5 图像**

概述

产品名称	Anti-ILF1抗体
描述	山羊多克隆抗体to ILF1
宿主	Goat
经测试应用	适用于: Flow Cyt (Intra), ICC/IF, WB
种属反应性	与反应: Human
免疫原	Synthetic peptide: TPPAAVREKGVQN, corresponding to C terminal amino acids 648-660 of Human ILF1. Run BLAST with Expasy Run BLAST with NCBI
阳性对照	Flow Cyt (Intra): HeLa cells.
常规说明	<p>The Life Science industry has been in the grips of a reproducibility crisis for a number of years. Abcam is leading the way in addressing this with our range of recombinant monoclonal antibodies and knockout edited cell lines for gold-standard validation. Please check that this product meets your needs before purchasing.</p> <p>If you have any questions, special requirements or concerns, please send us an inquiry and/or contact our Support team ahead of purchase. Recommended alternatives for this product can be found below, along with publications, customer reviews and Q&As</p>

性能

形式	Liquid
存放说明	Shipped at 4°C. Store at +4°C short term (1-2 weeks). Upon delivery aliquot. Store at -20°C or -80°C. Avoid freeze / thaw cycle.
存储溶液	pH: 7.30 Preservative: 0.02% Sodium azide Constituents: 0.5% Tris buffered saline, 0.5% BSA
纯度	Immunogen affinity purified
纯化说明	Purified from goat serum by ammonium sulphate precipitation followed by antigen affinity chromatography using the immunizing peptide.
克隆	多克隆
同种型	IgG

应用

The Abpromise guarantee

Abpromise™ 承诺保证使用 ab5298 于以下的经测试应用

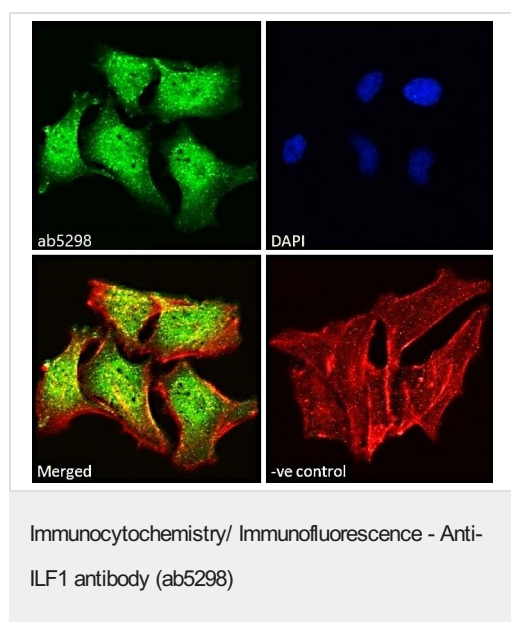
“应用说明”部分 下显示的仅为推荐的起始稀释度；实际最佳的稀释度/浓度应由使用者检定。

应用	Ab 评论	说明
Flow Cyt (Intra)		Use a concentration of 10 µg/ml.
ICC/IF		Use a concentration of 10 µg/ml.
WB		Use a concentration of 0.01 - 0.03 µg/ml. Detects a band of approximately 75-80 kDa (predicted molecular weight: 73 kDa). A 1 hour primary incubation is recommended for this product.

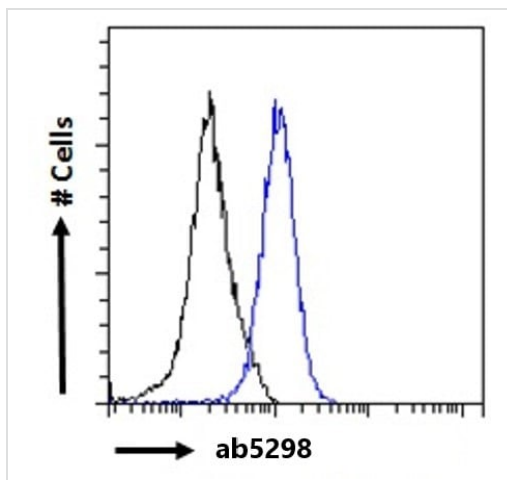
靶标

功能	Recognizes the core sequence 5'-TAAACA-3'. Binds to NFAT-like motifs (purine-rich) in the IL2 promoter. Also binds to HIV-1 long terminal repeat. May be involved in both positive and negative regulation of important viral and cellular promoter elements.
组织特异性	Expressed in both lymphoid and non-lymphoid cells.
序列相似性	Contains 1 FHA domain. Contains 1 fork-head DNA-binding domain.
结构域	The C-terminal part of the DNA-binding domain may contribute to DNA recognition specificity.
翻译后修饰	Phosphorylated upon DNA damage, probably by ATM or ATR.
细胞定位	Nucleus.

图片

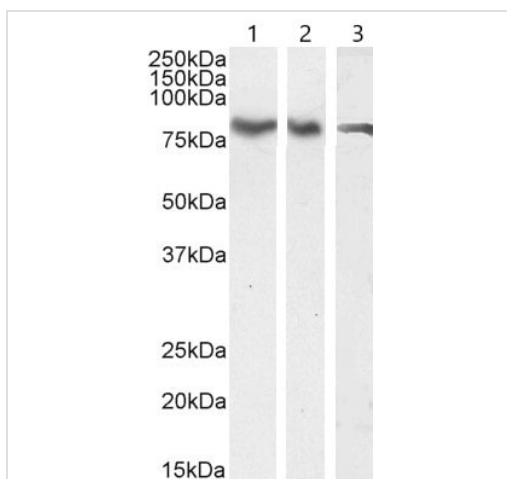


Immunofluorescent analysis of paraformaldehyde fixed HeLa cells, labeling ILF-1 with ab5298. Cells permeabilized with 0.15% Triton. Primary incubation 1hr (10 µg/mL) followed by Alexa Fluor 488 secondary antibody (2 µg/mL), showing nuclear and cytoplasmic/vesicle staining. Actin filaments were stained with phalloidin (red) and the nuclear stain is DAPI (blue). Negative control: Unimmunized goat IgG (10 µg/mL) followed by Alexa Fluor 488 secondary antibody (2 µg/mL).



Flow Cytometry (Intracellular) - Anti-ILF1 antibody (ab5298)

Flow cytometric analysis of paraformaldehyde fixed HeLa cells (blue line) labeling ILF1 with ab5298. Cells permeabilized with 0.5% Triton. Primary incubation 1hr (10 µg/mL) followed by Alexa Fluor 488 secondary antibody (1 µg/mL). IgG control: Unimmunized goat IgG (black line) followed by Alexa Fluor 488 secondary antibody.



Western blot - Anti-ILF1 antibody (ab5298)

All lanes : Anti-ILF1 antibody (ab5298) at 0.03 µg/ml

Lane 1 : HEK-293 (human epithelial cell line from embryonic kidney) nuclear cell lysate

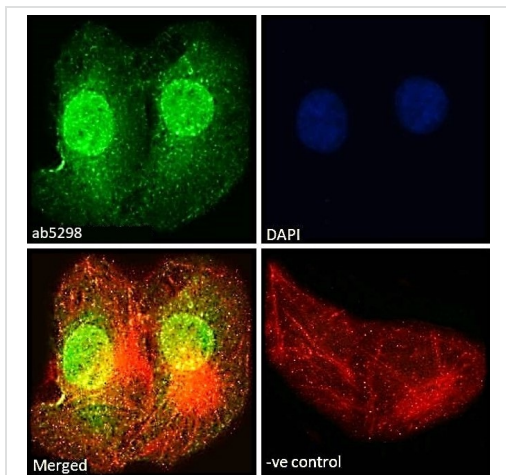
Lane 2 : HeLa (human epithelial cell line from cervix adenocarcinoma) nuclear cell lysate

Lane 3 : Jurkat (human T cell leukemia cell line from peripheral blood) nuclear cell lysate

Lysates/proteins at 35 µg per lane.

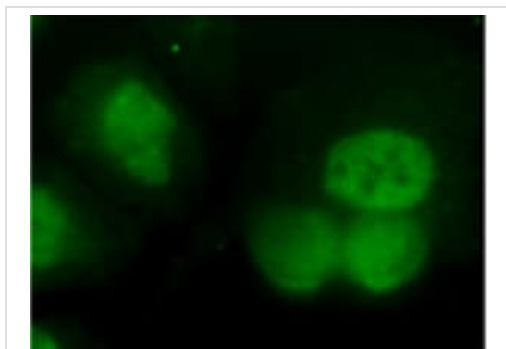
Predicted band size: 73 kDa

Observed band size: 80 kDa



Immunocytochemistry/ Immunofluorescence - Anti-ILF1 antibody (ab5298)

Immunofluorescent analysis of paraformaldehyde fixed U2OS cells, labeling ILF-1 with ab5298. Cells permeabilized with 0.15% Triton. Primary incubation 1hr (10 µg/mL) followed by Alexa Fluor 488 secondary antibody (2 µg/mL), showing nuclear and cytoplasmic/vesicle staining. Actin filaments were stained with phalloidin (red) and the nuclear stain is DAPI (blue). Negative control: Unimmunized goat IgG (10 µg/mL) followed by Alexa Fluor 488 secondary antibody (2 µg/mL).



Immunocytochemistry/ Immunofluorescence - Anti-ILF1 antibody (ab5298)

Image from Marais A et al., J Biol Chem. 2010 Nov 12;285(46):35728-39. Epub 2010 Sep 1. Fig 2.; doi: 10.1074/jbc.M110.154005; November 12, 2010, The Journal of Biological Chemistry, 285, 35728-35739.

Immunofluorescence analysis of U2OS cells, staining ILF1 with ab5298. Cells were fixed with 4% paraformaldehyde and incubated with primary antibody at 1/100 dilution. A FITC-conjugated rabbit anti-goat IgG was used as the secondary antibody.

Please note: All products are "FOR RESEARCH USE ONLY. NOT FOR USE IN DIAGNOSTIC PROCEDURES"

Our Abpromise to you: Quality guaranteed and expert technical support

- Replacement or refund for products not performing as stated on the datasheet
- Valid for 12 months from date of delivery
- Response to your inquiry within 24 hours
- We provide support in Chinese, English, French, German, Japanese and Spanish
- Extensive multi-media technical resources to help you
- We investigate all quality concerns to ensure our products perform to the highest standards

If the product does not perform as described on this datasheet, we will offer a refund or replacement. For full details of the Abpromise, please visit <https://www.abcam.cn/abpromise> or contact our technical team.

Terms and conditions

- Guarantee only valid for products bought direct from Abcam or one of our authorized distributors