

Anti-IL-6R antibody [B-R6]-BSA and Azide free ab47215

★ ★ ★ ★ ★ [1 Abreviews](#) [10 References](#) [1 图像](#)

概述

产品名称	Anti-IL-6R抗体[B-R6]-BSA and Azide free
描述	小鼠单克隆抗体[B-R6] to IL-6R - BSA and Azide free
宿主	Mouse
特异性	Recognises the Interleukin-6 Ra subunit, IL-6 Ra, IL-6 R, a 80 kDa protein. Inhibits IL-6 induced proliferation of XG-1 cells.
经测试应用	适用于: Flow Cyt
种属反应性	与反应: Human
免疫原	Tissue, cells or virus corresponding to Human IL-6R. gp80 transfected CHO cell line
阳性对照	U266 cell line
常规说明	<p>The Life Science industry has been in the grips of a reproducibility crisis for a number of years. Abcam is leading the way in addressing this with our range of recombinant monoclonal antibodies and knockout edited cell lines for gold-standard validation. Please check that this product meets your needs before purchasing.</p> <p>If you have any questions, special requirements or concerns, please send us an inquiry and/or contact our Support team ahead of purchase. Recommended alternatives for this product can be found below, along with publications, customer reviews and Q&As</p>

性能

形式	Liquid
存放说明	Shipped at 4°C. Store at +4°C short term (1-2 weeks). Upon delivery aliquot. Store at -20°C or -80°C. Avoid freeze / thaw cycle.
存储溶液	pH: 7.3 Constituent: PBS
无载体	是
纯度	Ion Exchange Chromatography
纯化说明	This antibody was sterile filtered through 0.22 µm and treated to remove endotoxins. It is carrier and preservative free.
克隆	单克隆
克隆编号	B-R6

骨髓瘤	x63-Ag8.653
同种型	IgG1
轻链类型	kappa

应用

The Abpromise guarantee **Abpromise™**承诺保证使用ab47215于以下的经测试应用

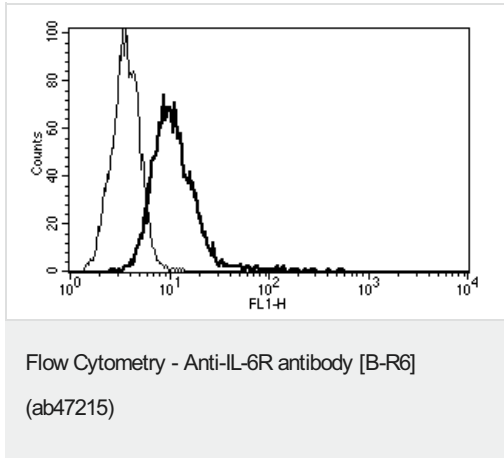
“应用说明”部分 下显示的仅为推荐的起始稀释度;实际最佳的稀释度/浓度应由使用者检定。

应用	Ab评论	说明
Flow Cyt		Use at an assay dependent concentration. ab170190 - Mouse monoclonal IgG1, is suitable for use as an isotype control with this antibody.

靶标

功能	Part of the receptor for interleukin 6. Binds to IL6 with low affinity, but does not transduce a signal. Signal activation necessitate an association with IL6ST. Activation may lead to the regulation of the immune response, acute-phase reactions and hematopoiesis. Low concentration of a soluble form of IL6 receptor acts as an agonist of IL6 activity.
组织特异性	Isoform 2 is expressed in peripheral blood mononuclear cells and weakly found in urine and serum.
序列相似性	Belongs to the type I cytokine receptor family. Type 3 subfamily. Contains 1 fibronectin type-III domain. Contains 1 Ig-like C2-type (immunoglobulin-like) domain.
结构域	The two fibronectin type-III-like domains, contained in the N-terminal part, form together a cytokine-binding domain. The WSXWS motif appears to be necessary for proper protein folding and thereby efficient intracellular transport and cell-surface receptor binding.
翻译后修饰	A short soluble form may also be released from the membrane by proteolysis.
细胞定位	Secreted and Basolateral cell membrane.

图片



ab47215 staining IL6R on U266 cell line.

Please note: All products are "FOR RESEARCH USE ONLY. NOT FOR USE IN DIAGNOSTIC PROCEDURES"

Our Abpromise to you: Quality guaranteed and expert technical support

- Replacement or refund for products not performing as stated on the datasheet
- Valid for 12 months from date of delivery
- Response to your inquiry within 24 hours
- We provide support in Chinese, English, French, German, Japanese and Spanish
- Extensive multi-media technical resources to help you
- We investigate all quality concerns to ensure our products perform to the highest standards

If the product does not perform as described on this datasheet, we will offer a refund or replacement. For full details of the Abpromise, please visit <https://www.abcam.cn/abpromise> or contact our technical team.

Terms and conditions

- Guarantee only valid for products bought direct from Abcam or one of our authorized distributors