


Anti-IL-6 antibody ab6672

★★★★☆ **45 Abreviews** **580 References** **4 图像**

概述

产品名称	Anti-IL-6抗体
描述	兔多克隆抗体to IL-6
宿主	Rabbit
特异性	<p>ab6672 detects a band at 25 kDa in human lung tissue lysate and mouse spleen tissue lysate, however the signal in mouse tissue is significantly lower. It also binds strongly to a protein at ~55 kDa in human lung tissue extracts, which we believe represents a glycosylated form of IL6.</p> <p>ab6672 also detects several bands in human lung tissue lysate within the region of 30-40 kDa. These may represent heteromers of IL6. Please be aware that this product has low homology with the mouse and rat sequence of IL6 (Rat, 40%; Mouse 41%, UniProt blast) and we therefore cannot guarantee reactivity in these species.</p>
经测试应用	适用于: WB, IHC-P
种属反应性	<p>与反应: Human</p> <p>预测可用于: Pig </p>
免疫原	<p>Recombinant full length protein corresponding to Human IL-6. Produced in E.coli.</p> <p>Database link: <u>P05231</u></p>
阳性对照	WB: Recombinant Human IL6 protein (<u>ab101044</u>), lysate of 2 x 10 ⁶ endotoxin-stimulated human peripheral blood mononuclear cells (PBMC)(PBMC are stimulated for 24 hours with 1% (v/v) human serum plus 10 ng/mL E.coli LPS).
常规说明	<p>IL-6 synonyms: plasmacytoma growth factor (PCT-GF),interferon-a-2 (IFN-a2), monocyte derived human B cellgrowth factor, B cell stimulating factor (BSF-2),hepatocyte stimulating factor (HSF), and interleukinhybridoma/plasmacytoma-1 (IL-HP1).</p> <p>The Life Science industry has been in the grips of a reproducibility crisis for a number of years. Abcam is leading the way in addressing this with our range of recombinant monoclonal antibodies and knockout edited cell lines for gold-standard validation. Please check that this product meets your needs before purchasing.</p> <p>If you have any questions, special requirements or concerns, please send us an inquiry and/or contact our Support team ahead of purchase. Recommended alternatives for this product can be found below, along with publications, customer reviews and Q&As</p>

性能

形式	Liquid
----	--------

存放说明	Shipped at 4°C. Store at +4°C short term (1-2 weeks). Upon delivery aliquot. Store at -20°C or -80°C. Avoid freeze / thaw cycle.
存储溶液	Constituents: 0.42% Potassium phosphate, 0.87% Sodium chloride
纯度	Whole antiserum
克隆	多克隆
同种型	IgG

应用

The Abpromise guarantee **Abpromise™**承诺保证使用ab6672于以下的经测试应用

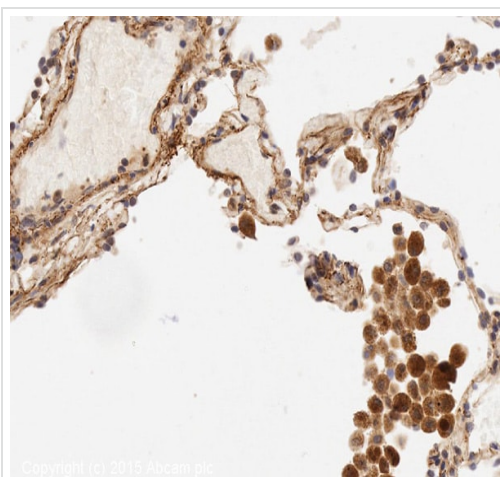
“应用说明”部分 下显示的仅为推荐的起始稀释度;实际最佳的稀释度/浓度应由使用者检定。

应用	Ab评论	说明
WB	★★★★★ (14)	1/500 - 1/2000.
IHC-P	★★★★★ (15)	1/400 - 1/800.

靶标

功能	<p>Cytokine with a wide variety of biological functions. It is a potent inducer of the acute phase response. Plays an essential role in the final differentiation of B-cells into Ig-secreting cells</p> <p>Involved in lymphocyte and monocyte differentiation. It induces myeloma and plasmacytoma growth and induces nerve cells differentiation Acts on B-cells, T-cells, hepatocytes, hematopoietic progenitor cells and cells of the CNS. Also acts as a myokine. It is discharged into the bloodstream after muscle contraction and acts to increase the breakdown of fats and to improve insulin resistance.</p>
疾病相关	<p>Genetic variations in IL6 are associated with susceptibility to rheumatoid arthritis systemic juvenile (RASJ) [MIM:604302]. An inflammatory articular disorder with systemic-onset beginning before the age of 16. It represents a subgroup of juvenile arthritis associated with severe extraarticular features and occasionally fatal complications. During active phases of the disorder, patients display a typical daily spiking fever, an evanescent macular rash, lymphadenopathy, hepatosplenomegaly, serositis, myalgia and arthritis.</p> <p>Note=A IL6 promoter polymorphism is associated with a lifetime risk of development of Kaposi sarcoma in HIV-infected men.</p>
序列相似性	Belongs to the IL-6 superfamily.
翻译后修饰	N- and O-glycosylated.
细胞定位	Secreted.

图片

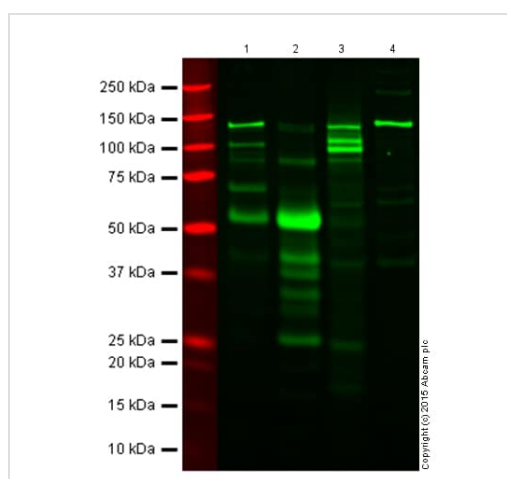


Immunohistochemistry (Formalin/PFA-fixed paraffin-embedded sections) - Anti-IL-6 antibody (ab6672)

IHC image of IL6 staining in human lung formalin fixed paraffin embedded tissue section*, performed on a Leica Bond™ system using the standard protocol F. The section was pre-treated using heat mediated antigen retrieval with sodium citrate buffer (pH6, epitope retrieval solution 1) for 20 mins. The section was then incubated with ab6672, 1/400, for 15 mins at room temperature and detected using an HRP conjugated compact polymer system. DAB was used as the chromogen. The section was then counterstained with haematoxylin and mounted with DPX.

For other IHC staining systems (automated and non-automated) customers should optimize variable parameters such as antigen retrieval conditions, primary antibody concentration and antibody incubation times.

*Tissue obtained from the Human Research Tissue Bank, supported by the NIHR Cambridge Biomedical Research Centre



Western blot - Anti-IL-6 antibody (ab6672)

All lanes : Anti-IL-6 antibody (ab6672) at 1/500 dilution

Lane 1 : Human spleen tissue lysate

Lane 2 : Human lung tissue lysate

Lane 3 : Mouse spleen tissue lysate

Lane 4 : Mouse lung tissue lysate

Lysates/proteins at 20 µg per lane.

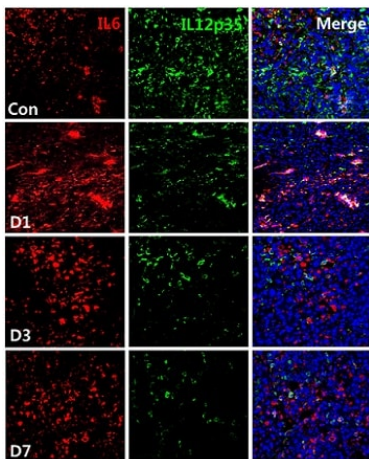
Performed under reducing conditions.

Additional bands at: 25 kDa, 55 kDa (possible glycosylated form). We are unsure as to the identity of these extra bands.

Tissue lysates were denatured for 10-15 minutes at 90°C. ab6672 was incubated overnight at 4°C and the secondary antibody for 1 hour at RT.

ab6672 detects a band at 25 kDa in Human lung tissue lysate and Mouse spleen tissue lysate, however the signal in mouse tissue is significantly lower. It also binds strongly to a protein at ~55 kDa in Human lung tissue extracts, which we believe represents a glycosylated form of IL6. ab6672 also detects several bands in

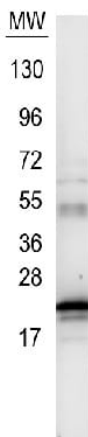
Human lung tissue lysate within the region of 30-40 kDa. These may represent heteromers of IL6.



Immunohistochemistry (Formalin/PFA-fixed paraffin-embedded sections) - Anti-IL-6 antibody (ab6672)

Lee EJ et al. Radiation Inhibits Interleukin-12 Production via Inhibition of C-Rel through the Interleukin-6/ Signal Transducer and Activator of Transcription 3 Signaling Pathway in Dendritic Cells. PLoS One 11:e0146463 (2016).

IL6 (Red) and IL-12 (Green) were measured at 1, 3, and 7 days after 10 Gy irradiation of HCa-1 tumors to determine whether irradiation regulates IL-12 and IL6 expression in tumours. ab6672 was used to stain IL6 at 1/100 dilution in immunohistochemical analysis.



Western blot - Anti-IL-6 antibody (ab6672)

Anti-IL-6 antibody (ab6672) at 1/500 dilution + recombinant human IL-6

Secondary

conjugated anti-Rabbit IgG at 1/40000 dilution

Developed using the ECL technique.

Observed band size: 21 kDa

4-20% Tris-Glycine gel.

The membrane was blocked for 30 minutes with 1% BSA-TBST.

Please note: All products are "FOR RESEARCH USE ONLY. NOT FOR USE IN DIAGNOSTIC PROCEDURES"

Our Abpromise to you: Quality guaranteed and expert technical support

- Replacement or refund for products not performing as stated on the datasheet
- Valid for 12 months from date of delivery
- Response to your inquiry within 24 hours

- We provide support in Chinese, English, French, German, Japanese and Spanish
- Extensive multi-media technical resources to help you
- We investigate all quality concerns to ensure our products perform to the highest standards

If the product does not perform as described on this datasheet, we will offer a refund or replacement. For full details of the Abpromise, please visit <https://www.abcam.cn/abpromise> or contact our technical team.

Terms and conditions

- Guarantee only valid for products bought direct from Abcam or one of our authorized distributors