

# Anti-IL-23R antibody ab175072

**2 References**   **2 图像**

### 概述

产品名称	Anti-IL-23R抗体
描述	兔多克隆抗体to IL-23R
宿主	Rabbit
经测试应用	适用于: ICC/IF, WB
种属反应性	与反应: Mouse, Rat, Human
免疫原	Recombinant full length protein corresponding to Human IL-23R. Database link: <a href="#">Q5VWK5</a>
阳性对照	Extracts of K562 cell lines.
常规说明	<p>The Life Science industry has been in the grips of a reproducibility crisis for a number of years. Abcam is leading the way in addressing this with our range of recombinant monoclonal antibodies and knockout edited cell lines for gold-standard validation. Please check that this product meets your needs before purchasing.</p> <p>If you have any questions, special requirements or concerns, please send us an inquiry and/or contact our Support team ahead of purchase. Recommended alternatives for this product can be found below, along with publications, customer reviews and Q&amp;As</p>

### 性能

形式	Liquid
存放说明	Shipped at 4°C. Store at +4°C short term (1-2 weeks). Upon delivery aliquot. Store at -20°C long term. Avoid freeze / thaw cycle.
存储溶液	<p>pH: 7.30</p> <p>Preservative: 0.02% Sodium azide</p> <p>Constituents: 50% Glycerol (glycerin, glycerine), 49% PBS</p>
纯度	Protein A purified
克隆	多克隆
同种型	IgG

### 应用

## The Abpromise guarantee

**Abpromise™** 承诺保证使用ab175072于以下的经测试应用

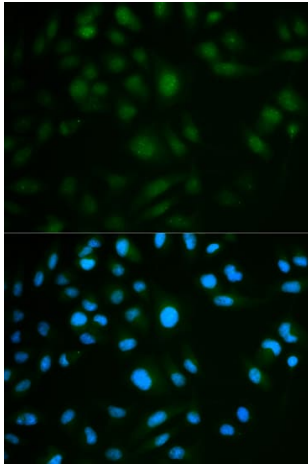
“应用说明”部分 下显示的仅为推荐的起始稀释度;实际最佳的稀释度/浓度应由使用者检定。

应用	Ab评论	说明
ICC/IF		Use at an assay dependent concentration.
WB		1/500 - 1/2000. Predicted molecular weight: 72 kDa.

## 靶标

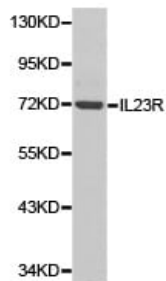
功能	Associates with IL12RB1 to form the interleukin-23 receptor. Binds IL23 and mediates T-cells, NK cells and possibly certain macrophage/myeloid cells stimulation probably through activation of the Jak-Stat signaling cascade. IL23 functions in innate and adaptive immunity and may participate in acute response to infection in peripheral tissues. IL23 may be responsible for autoimmune inflammatory diseases and be important for tumorigenesis.
组织特异性	Expressed by monocytes, Th1, Th0, NK and dendritic cells. Isoform 1 is specifically expressed in NK cells.
疾病相关	<p>Genetic variations in IL23R are associated with inflammatory bowel disease type 17 (IBD17) [MIM:612261]. IBD17 is a chronic, relapsing inflammation of the gastrointestinal tract with a complex etiology. It is subdivided into Crohn disease and ulcerative colitis phenotypes. Crohn disease may affect any part of the gastrointestinal tract from the mouth to the anus, but most frequently it involves the terminal ileum and colon. Bowel inflammation is transmural and discontinuous; it may contain granulomas or be associated with intestinal or perianal fistulas. In contrast, in ulcerative colitis, the inflammation is continuous and limited to rectal and colonic mucosal layers; fistulas and granulomas are not observed. Both diseases include extraintestinal inflammation of the skin, eyes, or joints.</p> <p>Genetic variations in IL23R are a cause of susceptibility to psoriasis type 7 (PSORS7) [MIM:605606]. Psoriasis is a common, chronic inflammatory disease of the skin with multifactorial etiology. It is characterized by red, scaly plaques usually found on the scalp, elbows and knees. These lesions are caused by abnormal keratinocyte proliferation and infiltration of inflammatory cells into the dermis and epidermis.</p>
序列相似性	<p>Belongs to the type I cytokine receptor family. Type 2 subfamily.</p> <p>Contains 2 fibronectin type-III domains.</p>
翻译后修饰	Phosphorylated in response to IL23.
细胞定位	Cell membrane.

## 图片



Immunocytochemistry/Immunofluorescence analysis of MCF7 cells using ab175072. Blue DAPI for nuclear staining.

Immunocytochemistry/ Immunofluorescence - Anti-IL-23R antibody (ab175072)



Anti-IL-23R antibody (ab175072) at 1/500 dilution + extracts of K562 cell lines

**Predicted band size: 72 kDa**

Western blot - Anti-IL-23R antibody (ab175072)

**Please note:** All products are "FOR RESEARCH USE ONLY. NOT FOR USE IN DIAGNOSTIC PROCEDURES"

### Our Abpromise to you: Quality guaranteed and expert technical support

- Replacement or refund for products not performing as stated on the datasheet
- Valid for 12 months from date of delivery
- Response to your inquiry within 24 hours
- We provide support in Chinese, English, French, German, Japanese and Spanish
- Extensive multi-media technical resources to help you
- We investigate all quality concerns to ensure our products perform to the highest standards

If the product does not perform as described on this datasheet, we will offer a refund or replacement. For full details of the Abpromise, please visit <https://www.abcam.cn/abpromise> or contact our technical team.

#### **Terms and conditions**

---

- Guarantee only valid for products bought direct from Abcam or one of our authorized distributors