

Anti-IL-15RA antibody ab183113

1 图像

概述

产品名称	Anti-IL-15RA抗体
描述	兔多克隆抗体to IL-15RA
宿主	Rabbit
经测试应用	适用于: WB
种属反应性	与反应: Human
免疫原	<p>Synthetic peptide within Human IL-15RA aa 250 to the C-terminus. The exact immunogen sequence used to generate this antibody is proprietary information. If additional detail on the immunogen is needed to determine the suitability of the antibody for your needs, please contact our Scientific Support team to discuss your requirements.</p> <p>Database link: NP_002180</p> <div>  Run BLAST with  Run BLAST with </div>
阳性对照	Human liver cancer tissue lysate; Human colon cancer tissue lysate; Human fetal kidney tissue lysate.
常规说明	<p>The Life Science industry has been in the grips of a reproducibility crisis for a number of years. Abcam is leading the way in addressing this with our range of recombinant monoclonal antibodies and knockout edited cell lines for gold-standard validation. Please check that this product meets your needs before purchasing.</p> <p>If you have any questions, special requirements or concerns, please send us an inquiry and/or contact our Support team ahead of purchase. Recommended alternatives for this product can be found below, along with publications, customer reviews and Q&As</p>

性能

形式	Liquid
存放说明	Shipped at 4°C. Store at +4°C short term (1-2 weeks). Upon delivery aliquot. Store at -20°C long term. Avoid freeze / thaw cycle.
存储溶液	<p>pH: 7.4</p> <p>Preservative: 0.05% Sodium azide</p> <p>Constituents: 49% PBS, 50% Glycerol (glycerin, glycerine)</p>
纯度	<p>PBS without Mg2+ and Ca2+</p> <p>Immunogen affinity purified</p>

克隆

多克隆

同种型

IgG

应用

The Abpromise guarantee

Abpromise™承诺保证使用ab183113于以下的经测试应用

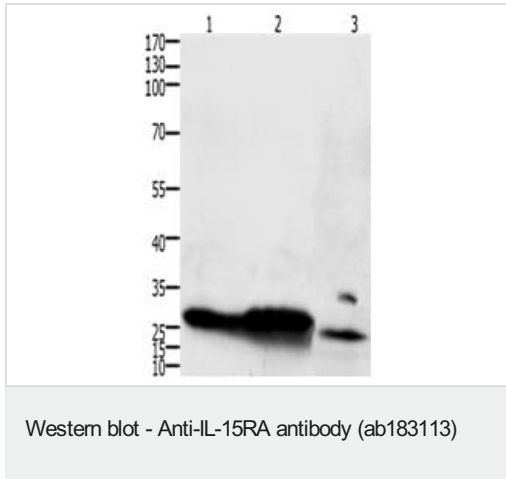
“应用说明”部分 下显示的仅为推荐的起始稀释度;实际最佳的稀释度/浓度应由使用者检定。

应用	Ab评论	说明
WB		1/1000 - 1/5000. Predicted molecular weight: 28 kDa.

靶标

功能	Receptor for interleukin-15. Expression of different isoforms may alter or interfere with signal transduction. Isoform 5, isoform 6, isoform 7 and isoform 8 do not bind IL15. Signal transduction involves STAT3, STAT5, STAT6, JAK2 (By similarity) and SYK.
组织特异性	Isoform 1, isoform 3, isoform 4, isoform 5, isoform 6, isoform 7, isoform 8 and isoform 9 are widely expressed. Expressed in fetal brain with higher expression in the hippocampus and cerebellum than in cortex and thalamus. Higher levels of soluble sIL-15RA form in comparison with membrane-bound forms is present in all brain structures.
序列相似性	Contains 1 Sushi (CCP/SCR) domain.
翻译后修饰	A soluble form (sIL-15RA) arises from proteolytic shedding of the membrane-anchored receptor. The cleavage involves ADAM17/TACE (By similarity). It also binds IL-15 and thus interferes with IL-15 binding to the membrane receptor. Phosphorylated by activated SYK. N-glycosylated and O-glycosylated.
细胞定位	Secreted > extracellular space; Membrane. Nucleus membrane. Mainly found associated with the nuclear membrane and Endoplasmic reticulum membrane. Golgi apparatus membrane. Cytoplasmic vesicle membrane. Membrane. Isoform 5, isoform 6, isoform 7 and isoform 8 are associated with endoplasmic reticulum, Golgi and cytoplasmic vesicles, but not with the nuclear membrane.

图片



All lanes : Anti-IL-15RA antibody (ab183113) at 1/200 dilution

Lane 1 : Human liver cancer tissue lysate

Lane 2 : Human colon cancer tissue lysate

Lane 3 : Human fetal kidney tissue lysate

Lysates/proteins at 30 µg per lane.

Secondary

All lanes : Goat Anti-rabbit HRP at 1/10000 dilution

Predicted band size: 28 kDa

Exposure time: 1 minute

Please note: All products are "FOR RESEARCH USE ONLY. NOT FOR USE IN DIAGNOSTIC PROCEDURES"

Our Abpromise to you: Quality guaranteed and expert technical support

- Replacement or refund for products not performing as stated on the datasheet
- Valid for 12 months from date of delivery
- Response to your inquiry within 24 hours
- We provide support in Chinese, English, French, German, Japanese and Spanish
- Extensive multi-media technical resources to help you
- We investigate all quality concerns to ensure our products perform to the highest standards

If the product does not perform as described on this datasheet, we will offer a refund or replacement. For full details of the Abpromise, please visit <https://www.abcam.cn/abpromise> or contact our technical team.

Terms and conditions

- Guarantee only valid for products bought direct from Abcam or one of our authorized distributors