



Anti-IL-12A antibody ab203031

[7 References](#) [2 图像](#)

概述

产品名称	Anti-IL-12A抗体
描述	兔多克隆抗体to IL-12A
宿主	Rabbit
经测试应用	适用于: WB
种属反应性	与反应: Mouse, Rat
免疫原	Synthetic peptide within Mouse IL-12A aa 1-100 conjugated to keyhole limpet haemocyanin. The exact immunogen sequence used to generate this antibody is proprietary information. If additional detail on the immunogen is needed to determine the suitability of the antibody for your needs, please contact our Scientific Support team to discuss your requirements. Database link: P43431
	 Run BLAST with  Run BLAST with
阳性对照	WB: Mouse liver, spleen, blood cell lysates; Rat spleen and liver lysates; mouse NIH3T3 and RAW 246.7 cell lysates
常规说明	<p>The Life Science industry has been in the grips of a reproducibility crisis for a number of years. Abcam is leading the way in addressing this with our range of recombinant monoclonal antibodies and knockout edited cell lines for gold-standard validation. Please check that this product meets your needs before purchasing.</p> <p>If you have any questions, special requirements or concerns, please send us an inquiry and/or contact our Support team ahead of purchase. Recommended alternatives for this product can be found below, along with publications, customer reviews and Q&As</p>

性能

形式	Liquid
存放说明	Shipped at 4°C. Store at +4°C short term (1-2 weeks). Upon delivery aliquot. Store at -20°C long term. Avoid freeze / thaw cycle.
存储溶液	pH: 7.40 Preservative: 0.02% Proclin 300 Constituents: 50% Glycerol (glycerin, glycerine), 1% BSA, 48.98% TBS, 1X
	Aqueous buffered solution
纯度	Protein A purified

克隆

多克隆

同种型

IgG

应用

The Abpromise guarantee

Abpromise™承诺保证使用ab203031于以下的经测试应用

“应用说明”部分 下显示的仅为推荐的起始稀释度;实际最佳的稀释度/浓度应由使用者检定。

应用	Ab评论	说明
WB		1/300 - 1/1000. Predicted molecular weight: 25 kDa.

靶标

功能

Cytokine that can act as a growth factor for activated T and NK cells, enhance the lytic activity of NK/lymphokine-activated Killer cells, and stimulate the production of IFN-gamma by resting PBMC.

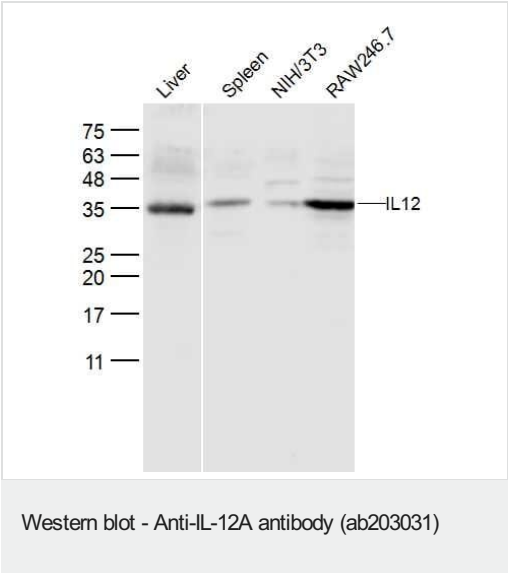
序列相似性

Belongs to the IL-6 superfamily.

细胞定位

Secreted.

图片



All lanes : Anti-IL-12A antibody (ab203031) at 1/300 dilution

Lane 1 : Mouse Liver

Lane 2 : Mouse Spleen

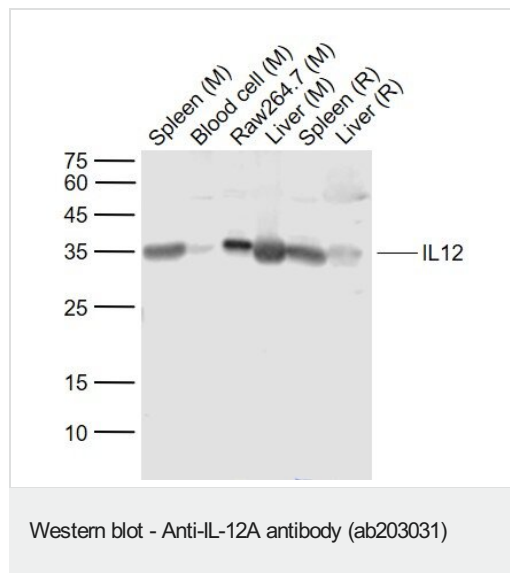
Lane 3 : NIH 3T3

Lane 4 : RAW 246.7

Secondary

All lanes : Conjugated Secondary at 1/10000 dilution

Predicted band size: 25 kDa



All lanes : Anti-IL-12A antibody (ab203031) at 1/1000 dilution

Lane 1 : Mouse Spleen lysate

Lane 2 : Mouse Blood cell lysate

Lane 3 : RAW 246.7

Lane 4 : Mouse Liver lysate

Lane 5 : Rat Spleen lysate

Lane 6 : Rat liver lysate

Secondary

All lanes : Conjugated Secondary at 1/20000 dilution

Predicted band size: 25 kDa

Please note: All products are "FOR RESEARCH USE ONLY. NOT FOR USE IN DIAGNOSTIC PROCEDURES"

Our Abpromise to you: Quality guaranteed and expert technical support

- Replacement or refund for products not performing as stated on the datasheet
- Valid for 12 months from date of delivery
- Response to your inquiry within 24 hours
- We provide support in Chinese, English, French, German, Japanese and Spanish
- Extensive multi-media technical resources to help you
- We investigate all quality concerns to ensure our products perform to the highest standards

If the product does not perform as described on this datasheet, we will offer a refund or replacement. For full details of the Abpromise, please visit <https://www.abcam.cn/abpromise> or contact our technical team.

Terms and conditions

- Guarantee only valid for products bought direct from Abcam or one of our authorized distributors