




### Anti-IKK beta (phospho Y188) antibody ab194519

★★★★★ [2 Abreviews](#) [9 References](#) [2 图像](#)

#### 概述

产品名称	Anti-IKK beta (phospho Y188)抗体
描述	兔多克隆抗体to IKK beta (phospho Y188)
宿主	Rabbit
经测试应用	适用于: WB, IHC-P
种属反应性	与反应: Human, African green monkey 预测可用于: Mouse, Rat 
免疫原	Synthetic peptide corresponding to Human IKK beta (phospho Y188) conjugated to keyhole limpet haemocyanin. Database link: <a href="#">O14920</a> <div>  <a href="#">Run BLAST with</a>  <a href="#">Run BLAST with</a> </div>
阳性对照	WB: COS7 cell extract. IHC-P: Human breast cancer tissue
常规说明	<p>The Life Science industry has been in the grips of a reproducibility crisis for a number of years. Abcam is leading the way in addressing this with our range of recombinant monoclonal antibodies and knockout edited cell lines for gold-standard validation. Please check that this product meets your needs before purchasing.</p> <p>If you have any questions, special requirements or concerns, please send us an inquiry and/or contact our Support team ahead of purchase. Recommended alternatives for this product can be found below, along with publications, customer reviews and Q&amp;As</p>

#### 性能

形式	Liquid
存放说明	Shipped at 4°C. Store at +4°C short term (1-2 weeks). Upon delivery aliquot. Store at -20°C long term. Avoid freeze / thaw cycle.
存储溶液	<p>pH: 7.40</p> <p>Preservative: 0.02% Sodium azide</p> <p>Constituents: 49% PBS, 50% Glycerol, 0.87% Sodium chloride</p> <p>PBS without Mg<sup>2+</sup> and Ca<sup>2+</sup>.</p>
纯度	Immunogen affinity purified
纯化说明	ab194519 was purified by affinity-chromatography using epitope-specific phosphopeptide. Non-

phospho specific antibodies were removed by chromatography using non-phosphopeptide.

克隆  
同种型

多克隆  
IgG

## 应用

**The Abpromise guarantee** **Abpromise™**承诺保证使用ab194519于以下的经测试应用

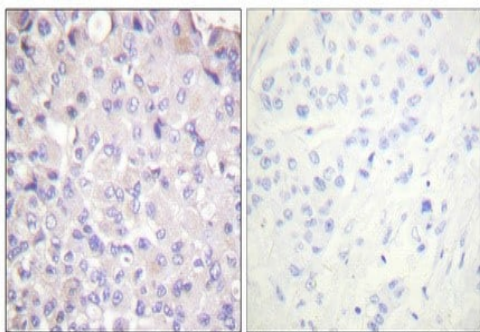
“应用说明”部分 下显示的仅为推荐的起始稀释度;实际最佳的稀释度/浓度应由使用者检定。

应用	Ab评论	说明
WB	★★★★★ (2)	1/500 - 1/1000. Predicted molecular weight: 87 kDa.
IHC-P		Use at an assay dependent concentration.

## 靶标

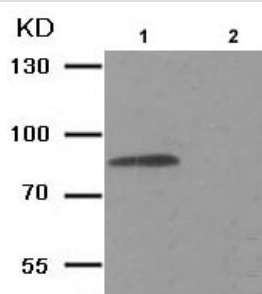
功能	Acts as part of the IKK complex in the conventional pathway of NF-kappa-B activation and phosphorylates inhibitors of NF-kappa-B thus leading to the dissociation of the inhibitor/NF-kappa-B complex and ultimately the degradation of the inhibitor. Also phosphorylates NCOA3.
组织特异性	Highly expressed in heart, placenta, skeletal muscle, kidney, pancreas, spleen, thymus, prostate, testis and peripheral blood.
序列相似性	Belongs to the protein kinase superfamily. Ser/Thr protein kinase family. I-kappa-B kinase subfamily. Contains 1 protein kinase domain.
翻译后修饰	Upon cytokine stimulation, phosphorylated on Ser-177 and Ser-181 by MEKK1 and/or MAP3K14/NIK; which enhances activity. Once activated, autophosphorylates on the C-terminal serine cluster; which decreases activity and prevents prolonged activation of the inflammatory response. Acetylation of Thr-180 by Yersinia yopJ prevents phosphorylation and activation, thus blocking the I-kappa-B pathway. Ubiquitinated. Monoubiquitination involves TRIM21 that leads to inhibition of Tax-induced NF-kappa-B signaling. According to PubMed:19675099, 'Ser-163' does not serve as a monoubiquitination site. According to PubMed:16267042, ubiquitination on 'Ser-163' modulates phosphorylation on C-terminal serine residues. Monoubiquitination by TRIM21 is disrupted by Yersinia yopJ.
细胞定位	Cytoplasm. Membrane raft. Colocalized with DPP4 in membrane rafts.

## 图片



Immunohistochemistry (Formalin/PFA-fixed paraffin-embedded sections) - Anti-IκK beta (phospho Y188) antibody (ab194519)

Immunohistochemical analysis of paraffin-embedded Human breast cancer tissue staining IκK beta (phospho Y188) using ab194519 at 1:100 dilution (4°C overnight). High-pressure and temperature Tris-EDTA, pH8.0 was used for antigen retrieval. Negative control (right) obtained from antibody was pre-absorbed by immunogen peptide.



Western blot - Anti-IκK beta (phospho Y188) antibody (ab194519)

**All lanes :** Anti-IκK beta (phospho Y188) antibody (ab194519) at 1/500 dilution

**Lane 1 :** COS7 cell extract

**Lane 2 :** COS7 cell extract with antigen-specific peptide

**Predicted band size:** 87 kDa

**Please note:** All products are "FOR RESEARCH USE ONLY. NOT FOR USE IN DIAGNOSTIC PROCEDURES"

### Our Abpromise to you: Quality guaranteed and expert technical support

- Replacement or refund for products not performing as stated on the datasheet
- Valid for 12 months from date of delivery
- Response to your inquiry within 24 hours
- We provide support in Chinese, English, French, German, Japanese and Spanish
- Extensive multi-media technical resources to help you
- We investigate all quality concerns to ensure our products perform to the highest standards

If the product does not perform as described on this datasheet, we will offer a refund or replacement. For full details of the Abpromise, please visit <https://www.abcam.cn/abpromise> or contact our technical team.

## Terms and conditions

---

- Guarantee only valid for products bought direct from Abcam or one of our authorized distributors