

### Anti-IKK alpha (phospho T23) antibody ab38515

★★★★★ [2 Abreviews](#) [38 References](#) [3 图像](#)

#### 概述

产品名称	Anti-IKK alpha (phospho T23)抗体
描述	兔多克隆抗体to IKK alpha (phospho T23)
宿主	Rabbit
经测试应用	适用于: ICC/IF, WB, IHC-P
种属反应性	与反应: Human
免疫原	Synthetic peptide corresponding to Human IKK alpha aa 1-100 (phospho T23). Database link: <a href="#">O15111</a>
常规说明	<p>The Life Science industry has been in the grips of a reproducibility crisis for a number of years. Abcam is leading the way in addressing this with our range of recombinant monoclonal antibodies and knockout edited cell lines for gold-standard validation. Please check that this product meets your needs before purchasing.</p> <p>If you have any questions, special requirements or concerns, please send us an inquiry and/or contact our Support team ahead of purchase. Recommended alternatives for this product can be found below, along with publications, customer reviews and Q&amp;As</p>

#### 性能

形式	Liquid
存放说明	Shipped at 4°C. Upon delivery aliquot and store at -20°C. Avoid freeze / thaw cycles.
存储溶液	pH: 7.40 Preservative: 0.02% Sodium azide Constituents: 50% Glycerol, 0.87% Sodium chloride, PBS
纯度	Immunogen affinity purified
纯化说明	The antibody was affinity purified from rabbit antiserum by affinity chromatography using epitope-specific phosphopeptide. The antibody against non-phosphopeptide was removed by chromatography using non-phosphopeptide corresponding to the phosphorylation site.
克隆	多克隆
同种型	IgG

#### 应用

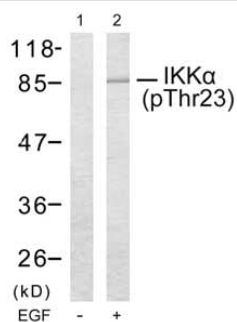
The Abpromise guarantee

Abpromise™承诺保证使用ab38515于以下的经测试应用

“应用说明”部分 下显示的仅为推荐的起始稀释度;实际最佳的稀释度/浓度应由使用者检定。

应用	Ab评论	说明
ICC/IF		Use a concentration of 1 µg/ml.
WB	★☆☆☆☆ (1)	1/500 - 1/1000. Detects a band of approximately 85 kDa (predicted molecular weight: 85 kDa).
IHC-P		Use at an assay dependent concentration.

靶标	
功能	Acts as part of the IKK complex in the conventional pathway of NF-kappa-B activation and phosphorylates inhibitors of NF-kappa-B thus leading to the dissociation of the inhibitor/NF-kappa-B complex and ultimately the degradation of the inhibitor. As part of the non-canonical pathway of NF-kappa-B activation, the MAP3K14-activated CHUK/IKKA homodimer phosphorylates NFkB2/p100 associated with RelB, inducing its proteolytic processing to NFkB2/p52 and the formation of NF-kappa-B RelB-p52 complexes. Also phosphorylates NCOA3. Phosphorylates 'Ser-10' of histone H3 at NF-kappa-B-regulated promoters during inflammatory responses triggered by cytokines.
组织特异性	Widely expressed.
疾病相关	Defects in CHUK are the cause of cocoon syndrome (COCOS) [MIM:613630]; also known as fetal encasement syndrome. COCOS is a lethal syndrome characterized by multiple fetal malformations including defective face and seemingly absent limbs, which are bound to the trunk and encased under the skin.
序列相似性	Belongs to the protein kinase superfamily. Ser/Thr protein kinase family. I-kappa-B kinase subfamily. Contains 1 protein kinase domain.
翻译后修饰	Phosphorylated by MAP3K14/NIK, AKT and to a lesser extent by MEKK1, and dephosphorylated by PP2A. Autophosphorylated. Acetylation of Thr-179 by Yersinia yopJ prevents phosphorylation and activation, thus blocking the I-kappa-B signaling pathway.
细胞定位	Cytoplasm. Nucleus. Shuttles between the cytoplasm and the nucleus.
图片	



Western blot - Anti-IKK alpha (phospho T23)  
antibody (ab38515)

**All lanes :** Anti-IKK alpha (phospho T23) antibody (ab38515) at 1/500 dilution

**Lane 1 :** MDA-MB-435 cell extract.

**Lane 2 :** MDA-MB-435 cell extract + EGF ( The cells were treated with 200ng/ml EGF for 5 minutes).

Lysates/proteins at 30 µg per lane.

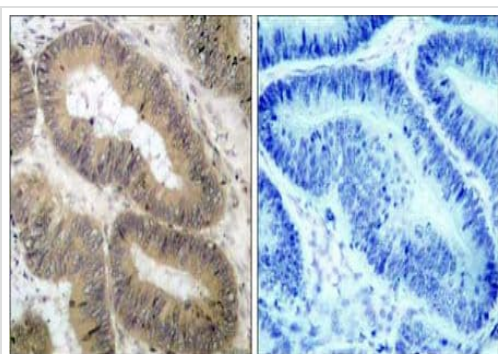
### Secondary

**All lanes :** Alkaline Phosphatase AffiniPure Goat Anti-Rabbit IgG (H+L)

**Predicted band size:** 85 kDa

**Observed band size:** 85 kDa

Lanes can be loaded with 5-30µg of total protein.

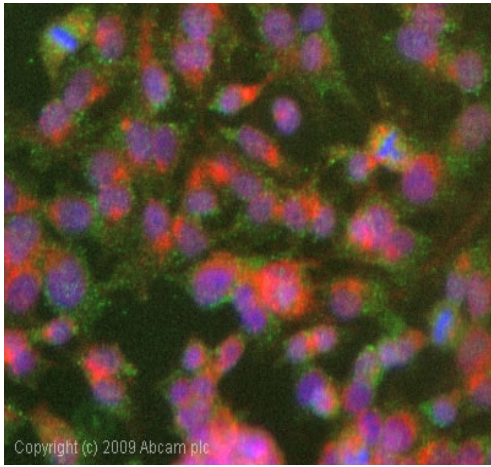


Immunohistochemistry (Formalin/PFA-fixed paraffin-embedded sections) - Anti-IKK alpha (phospho T23) antibody (ab38515)

ab38515 at a 1:50 dilution staining IKK alpha in Human colon carcinoma tissue using Immunohistochemistry, Paraffin Embedded Tissue.

Left image : untreated.

Right image : treated with phosphopeptide.



Immunocytochemistry/ Immunofluorescence - Anti-IKK alpha (phospho T23) antibody (ab38515)

ICC/IF image of ab38515 stained HepG2 cells. The cells were 4% formaldehyde fixed (10 min) and then incubated in 1%BSA / 10% normal goat serum / 0.3M glycine in 0.1% PBS-Tween for 1h to permeabilise the cells and block non-specific protein-protein interactions. The cells were then incubated with the antibody (ab38515, 1µg/ml) overnight at +4°C. The secondary antibody (green) was Alexa Fluor® 488 goat anti-rabbit IgG (H+L) used at a 1/1000 dilution for 1h. Alexa Fluor® 594 WGA was used to label plasma membranes (red) at a 1/200 dilution for 1h. DAPI was used to stain the cell nuclei (blue) at a concentration of 1.43µM.

**Please note:** All products are "FOR RESEARCH USE ONLY. NOT FOR USE IN DIAGNOSTIC PROCEDURES"

### Our Abpromise to you: Quality guaranteed and expert technical support

---

- Replacement or refund for products not performing as stated on the datasheet
- Valid for 12 months from date of delivery
- Response to your inquiry within 24 hours
- We provide support in Chinese, English, French, German, Japanese and Spanish
- Extensive multi-media technical resources to help you
- We investigate all quality concerns to ensure our products perform to the highest standards

If the product does not perform as described on this datasheet, we will offer a refund or replacement. For full details of the Abpromise, please visit <https://www.abcam.cn/abpromise> or contact our technical team.

### Terms and conditions

---

- Guarantee only valid for products bought direct from Abcam or one of our authorized distributors