


Anti-IKK alpha antibody [ABM10G9] ab227852

敲除验证

2 References 2 图像

概述	
产品名称	Anti-IKK alpha抗体[ABM10G9]
描述	小鼠单克隆抗体[ABM10G9] to IKK alpha
宿主	Mouse
经测试应用	适用于: WB 不适用于: Flow Cyt
种属反应性	与反应: Mouse, Human 预测可用于: Cow 
阳性对照	WB: HeLa, MCF7, U-87 MG, PC-3 and HEK-293 cell lysates; mouse small intestine lysate.
常规说明	<p>The Life Science industry has been in the grips of a reproducibility crisis for a number of years. Abcam is leading the way in addressing this with our range of recombinant monoclonal antibodies and knockout edited cell lines for gold-standard validation. Please check that this product meets your needs before purchasing.</p> <p>If you have any questions, special requirements or concerns, please send us an inquiry and/or contact our Support team ahead of purchase. Recommended alternatives for this product can be found below, along with publications, customer reviews and Q&As</p>
性能	
形式	Liquid
存放说明	Shipped at 4°C. Store at +4°C short term (1-2 weeks). Upon delivery aliquot. Store at -20°C long term. Avoid freeze / thaw cycle.
存储溶液	Preservative: 0.05% Sodium azide Constituents: PBS, 0.05% BSA
纯度	Protein G purified
克隆	单克隆
克隆编号	ABM10G9
同种型	IgG1
轻链类型	kappa

应用

The Abpromise guarantee

Abpromise™承诺保证使用ab227852于以下的经测试应用

“应用说明”部分 下显示的仅为推荐的起始稀释度;实际最佳的稀释度/浓度应由使用者检定。

应用	Ab评论	说明
WB		Use a concentration of 2 - 4 µg/ml. Predicted molecular weight: 85 kDa.

应用说明

Is unsuitable for Flow Cyt.

靶标

功能

Acts as part of the IKK complex in the conventional pathway of NF-kappa-B activation and phosphorylates inhibitors of NF-kappa-B thus leading to the dissociation of the inhibitor/NF-kappa-B complex and ultimately the degradation of the inhibitor. As part of the non-canonical pathway of NF-kappa-B activation, the MAP3K14-activated CHUK/IKKA homodimer phosphorylates NFKB2/p100 associated with RelB, inducing its proteolytic processing to NFKB2/p52 and the formation of NF-kappa-B RelB-p52 complexes. Also phosphorylates NCOA3. Phosphorylates 'Ser-10' of histone H3 at NF-kappa-B-regulated promoters during inflammatory responses triggered by cytokines.

组织特异性

Widely expressed.

疾病相关

Defects in CHUK are the cause of cocoon syndrome (COCOS) [MIM:613630]; also known as fetal encasement syndrome. COCOS is a lethal syndrome characterized by multiple fetal malformations including defective face and seemingly absent limbs, which are bound to the trunk and encased under the skin.

序列相似性

Belongs to the protein kinase superfamily. Ser/Thr protein kinase family. I-kappa-B kinase subfamily.
Contains 1 protein kinase domain.

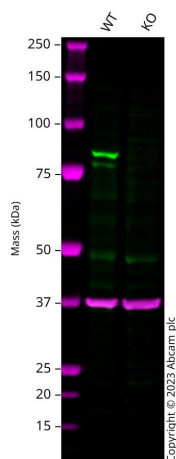
翻译后修饰

Phosphorylated by MAP3K14/NIK, AKT and to a lesser extent by MEKK1, and dephosphorylated by PP2A. Autophosphorylated.
Acetylation of Thr-179 by Yersinia yopJ prevents phosphorylation and activation, thus blocking the I-kappa-B signaling pathway.

细胞定位

Cytoplasm. Nucleus. Shuttles between the cytoplasm and the nucleus.

图片



Western blot - Anti-IKK alpha antibody [ABM10G9] (ab227852)

All lanes : Anti-IKK alpha antibody [ABM10G9] (ab227852) at 2 $\mu\text{g/ml}$

Lane 1 : Wild-type HAP1 cell lysate

Lane 2 : IKKa/b knockout HAP1 cell lysate

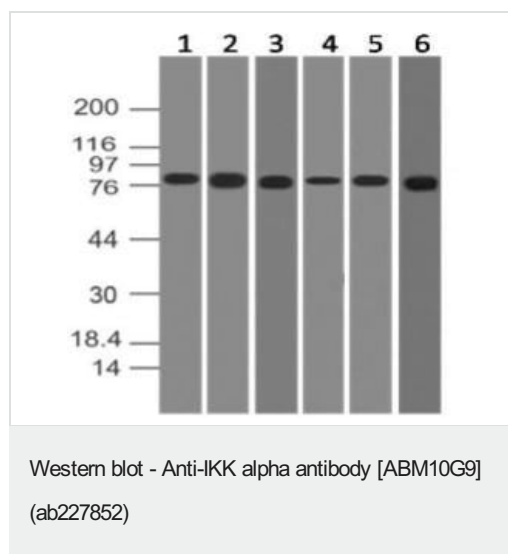
Lysates/proteins at 20 μg per lane.

Performed under reducing conditions.

Predicted band size: 85 kDa

Observed band size: 85 kDa

Western blot: Anti-IKKa/b antibody [ABM10G9] (ab227852) staining at 2 $\mu\text{g/ml}$, shown in green; Rabbit Anti-GAPDH antibody [EPR16891] ([ab181602](#)) loading control staining at 1/20000 dilution, shown in magenta. In Western blot, ab227852 was shown to bind specifically to IKKa/b. A band was observed at 85 kDa in wild-type HAP1 cell lysates with no signal observed at this size in IKKa/b knockout cell line. To generate this image, wild-type and IKKa/b knockout HAP1 cell lysates were analysed. First, samples were run on an SDS-PAGE gel then transferred onto a nitrocellulose membrane. Membranes were blocked in 3 % milk in TBS-0.1 % Tween[®] 20 (TBS-T) before incubation with primary antibodies overnight at 4 °C. Blots were washed four times in TBS-T, incubated with secondary antibodies for 1 h at room temperature, washed again four times then imaged. Secondary antibodies used were Goat anti-Mouse IgG H&L 800CW and Goat anti-Rabbit IgG H&L 680RD at 1/20000 dilution.



All lanes : Anti-IKK alpha antibody [ABM10G9] (ab227852) at 2 µg/ml

Lane 1 : HeLa (human epithelial cell line from cervix adenocarcinoma) cell lysate

Lane 2 : MCF7 (human breast adenocarcinoma cell line) cell lysate

Lane 3 : U-87 MG (human glioblastoma-astrocytoma epithelial cell line) cell lysate

Lane 4 : Mouse small intestine lysate

Lane 5 : PC-3 (human prostate adenocarcinoma cell line) cell lysate

Lane 6 : HEK-293 (human epithelial cell line from embryonic kidney) cell lysate

Predicted band size: 85 kDa

Please note: All products are "FOR RESEARCH USE ONLY. NOT FOR USE IN DIAGNOSTIC PROCEDURES"

Our Abpromise to you: Quality guaranteed and expert technical support

- Replacement or refund for products not performing as stated on the datasheet
- Valid for 12 months from date of delivery
- Response to your inquiry within 24 hours
- We provide support in Chinese, English, French, German, Japanese and Spanish
- Extensive multi-media technical resources to help you
- We investigate all quality concerns to ensure our products perform to the highest standards

If the product does not perform as described on this datasheet, we will offer a refund or replacement. For full details of the Abpromise, please visit <https://www.abcam.cn/abpromise> or contact our technical team.

Terms and conditions

- Guarantee only valid for products bought direct from Abcam or one of our authorized distributors