


Anti-IGFBP2 antibody ab227881

1 References **3 图像**

概述

产品名称	Anti-IGFBP2抗体
描述	兔多克隆抗体to IGFBP2
宿主	Rabbit
经测试应用	适用于: WB, IHC-P, ICC/IF
种属反应性	与反应: Human 预测可用于: Pig 
免疫原	Recombinant fragment within Human IGFBP2 (internal sequence). The exact sequence is proprietary. Database link: P18065
阳性对照	ICC/IF: Huh-7 cells. IHC-P: Human breast carcinoma tissue. WB: SK-N-AS whole cell lysate.
常规说明	<p>The Life Science industry has been in the grips of a reproducibility crisis for a number of years. Abcam is leading the way in addressing this with our range of recombinant monoclonal antibodies and knockout edited cell lines for gold-standard validation. Please check that this product meets your needs before purchasing.</p> <p>If you have any questions, special requirements or concerns, please send us an inquiry and/or contact our Support team ahead of purchase. Recommended alternatives for this product can be found below, along with publications, customer reviews and Q&As</p>

性能

形式	Liquid
存放说明	Shipped at 4°C. Store at +4°C short term (1-2 weeks). Upon delivery aliquot. Store at -20°C long term. Avoid freeze / thaw cycle.
存储溶液	pH: 7.00 Preservative: 0.025% Proclin 300 Constituents: 79% PBS, 20% Glycerol (glycerin, glycerine)
纯度	Immunogen affinity purified
克隆	多克隆
同种型	IgG

应用

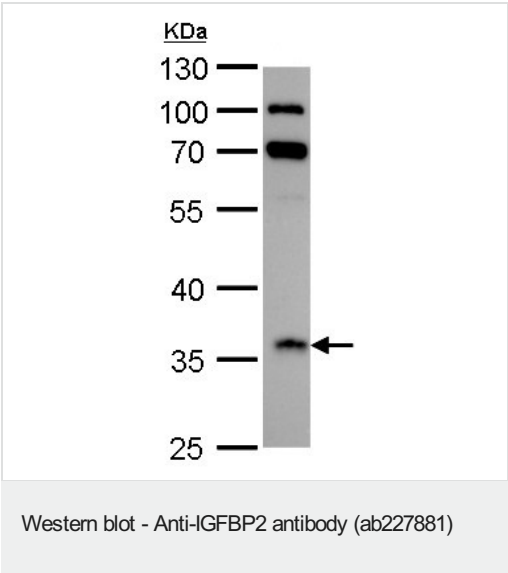
The Abpromise guarantee **Abpromise™**承诺保证使用ab227881于以下的经测试应用
“应用说明”部分 下显示的仅为推荐的起始稀释度;实际最佳的稀释度/浓度应由使用者检定。

应用	Ab评论	说明
WB		1/500 - 1/3000. Predicted molecular weight: 35 kDa.
IHC-P		1/100 - 1/1000.
ICC/IF		1/100 - 1/1000.

靶标

功能	Inhibits IGF-mediated growth and developmental rates. IGF-binding proteins prolong the half-life of the IGFs and have been shown to either inhibit or stimulate the growth promoting effects of the IGFs on cell culture. They alter the interaction of IGFs with their cell surface receptors.
序列相似性	Contains 1 IGFBP N-terminal domain. Contains 1 thyroglobulin type-1 domain.
结构域	The C-terminus is required for IGF-binding and growth inhibition.
翻译后修饰	O-glycosylated.
细胞定位	Secreted.

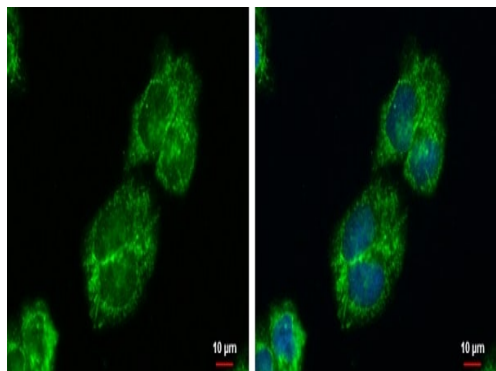
图片



Anti-IGFBP2 antibody (ab227881) at 1/1000 dilution + SK-N-AS whole cell lysate at 30 µg

Predicted band size: 35 kDa

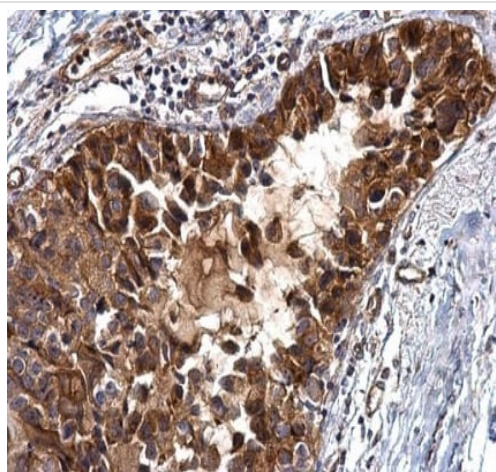
10 % SDS-PAGE gel.



Immunocytochemistry/ Immunofluorescence - Anti-IGFBP2 antibody (ab227881)

Huh-7 cells stained for IGFBP2 (green) using ab227881 at 1/500 dilution in ICC/IF. Cells were fixed in 4% paraformaldehyde at RT for 15 minutes.

Blue: Hoechst 33342 staining.



Immunohistochemistry (Formalin/PFA-fixed paraffin-embedded sections) - Anti-IGFBP2 antibody (ab227881)

Paraffin-embedded human breast carcinoma tissue stained for IGFBP2 using ab227881 at 1/500 dilution in immunohistochemical analysis.

Please note: All products are "FOR RESEARCH USE ONLY. NOT FOR USE IN DIAGNOSTIC PROCEDURES"

Our Abpromise to you: Quality guaranteed and expert technical support

- Replacement or refund for products not performing as stated on the datasheet
- Valid for 12 months from date of delivery
- Response to your inquiry within 24 hours
- We provide support in Chinese, English, French, German, Japanese and Spanish
- Extensive multi-media technical resources to help you
- We investigate all quality concerns to ensure our products perform to the highest standards

If the product does not perform as described on this datasheet, we will offer a refund or replacement. For full details of the Abpromise, please visit <https://www.abcam.cn/abpromise> or contact our technical team.

Terms and conditions

- Guarantee only valid for products bought direct from Abcam or one of our authorized distributors