

### Anti-IGF1+IGF2 antibody ab9572

★★★★★ [8 Abreviews](#) [104 References](#) [4 图像](#)

#### 概述

产品名称	Anti-IGF1+IGF2抗体
描述	兔多克隆抗体to IGF1 + IGF2
宿主	Rabbit
经测试应用	适用于: ICC/IF, IHC-FoFr, WB, Neutralising, IHC-P, Sandwich ELISA
种属反应性	与反应: Mouse, Human, Recombinant fragment
免疫原	Recombinant full length protein corresponding to Human IGF1. Highly pure (>98%) recombinant hIGF-1 (human Insulin Like Growth Factor-1). Database link: <a href="#">P05019</a>
阳性对照	IHC-P: Human pancreas and liver tissues.
常规说明	Although some customers have been successful in IHC we no longer batch test in this application. For an IHC validated antibody please see <a href="#">ab263903</a>  The Life Science industry has been in the grips of a reproducibility crisis for a number of years. Abcam is leading the way in addressing this with our range of recombinant monoclonal antibodies and knockout edited cell lines for gold-standard validation. Please check that this product meets your needs before purchasing.  If you have any questions, special requirements or concerns, please send us an inquiry and/or contact our Support team ahead of purchase. Recommended alternatives for this product can be found below, along with publications, customer reviews and Q&As

#### 性能

形式	Lyophilized:Reconstitute with 200µl of sterile water. Please note that if you receive this product in liquid form it has already been reconstituted as described and no further reconstitution is necessary.
存放说明	Shipped at 4°C. Store at +4°C short term (1-2 weeks). Upon delivery aliquot. Store at -20°C long term.
纯度	Immunogen affinity purified
克隆	多克隆
同种型	IgG
轻链类型	unknown

## 应用

**The Abpromise guarantee**      **Abpromise™**承诺保证使用ab9572于以下的经测试应用

“应用说明”部分 下显示的仅为推荐的起始稀释度;实际最佳的稀释度/浓度应由使用者检定。

应用	Ab评论	说明
ICC/IF	★★★★★ (2)	Use at an assay dependent concentration.
IHC-FoFr	★★★★★ (1)	Use at an assay dependent concentration. PubMed: 28754163
WB	★★★★★ (2)	Use at an assay dependent concentration. Predicted molecular weight: 22 kDa. To detect hIGF-1 by Western Blot analysis this antibody can be used at a concentration of 0.1 - 0.2 µg/ml. Used in conjunction with compatible secondary reagents the detection limit for recombinant hIGF-1 is 1.5 - 3.0 ng/lane, under either reducing or non-reducing conditions.
Neutralising		Use at an assay dependent concentration. To yield one-half maximal inhibition of the biological activity of hIGF-1 (5.0 ng/ml), a concentration of 0.67 - 1.0 µg/ml of this antibody is required.
IHC-P	★★★★★ (1)	Use a concentration of 1 µg/ml. Perform heat mediated antigen retrieval before commencing with IHC staining protocol.
Sandwich ELISA		Use a concentration of 0.5 - 2 µg/ml. Can be paired for Sandwich ELISA with <b>Biotin Rabbit polyclonal to IGF1 (ab83137)</b> . Allows for the detection of at least 0.2 - 0.4 ng/well of recombinant IGF1.

## 靶标

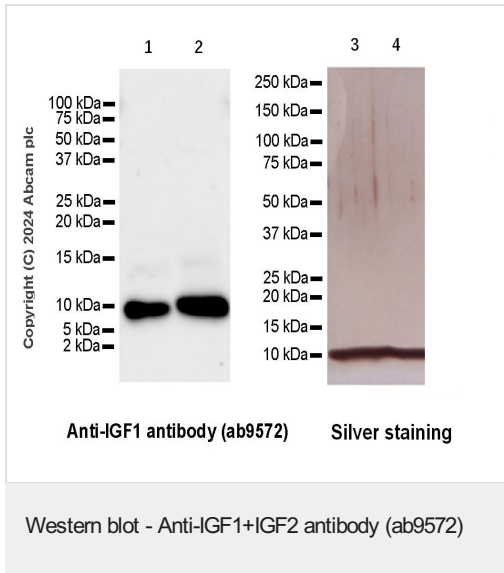
### 细胞定位

IGF1: Secreted. IGF2: Secreted.

### 形式

IGF1: There are 2 isoforms produced by alternative splicing. Isoform 1 also known as: IGF-1B; Isoform 2 also known as: IGF-1A.

## 图片



**All lanes :** Anti-IGF1+IGF2 antibody (ab9572) at 1/1000 dilution

**Lanes 1 & 3 :** Mouse IGF-2 recombinant protein (aa25-91, without tag)

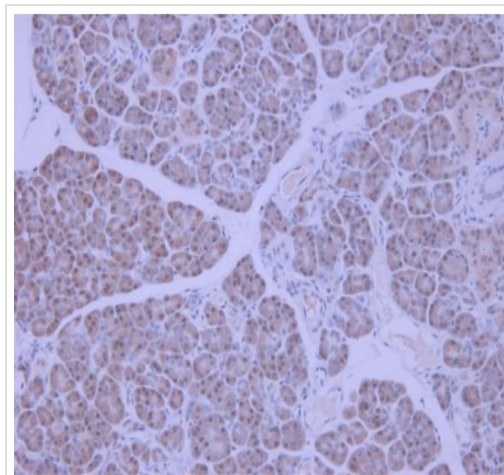
**Lanes 2 & 4 :** Mouse IGF-1 recombinant protein (aa25-91, without tag)

### Secondary

**All lanes :** Goat Anti-Rabbit IgG H&L (HRP) ([ab97051](#)) at 1/20000 dilution

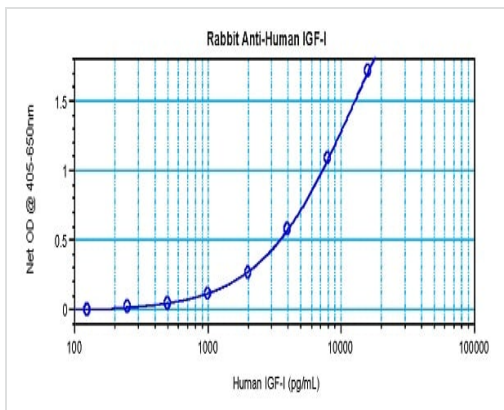
**Predicted band size:** 22 kDa

**Exposure time:** 59 seconds



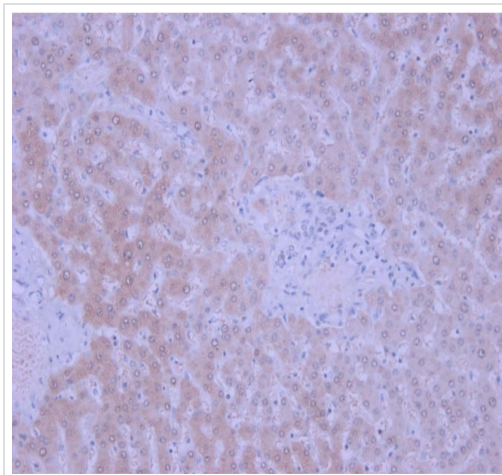
Immunohistochemistry (Formalin/PFA-fixed paraffin-embedded sections) analysis of human pancreas tissue labelling IGF1 with ab9572 at 1 µg/mL (45 minute incubation at room temperature). Heat mediated antigen retrieval was performed using a buffer at pH 6. An HRP-labeled polymer detection system was used with a DAB chromogen.

Immunohistochemistry (Formalin/PFA-fixed paraffin-embedded sections) - Anti-IGF1+IGF2 antibody (ab9572)



Sandwich ELISA - Anti-IGF1+IGF2 antibody  
(ab9572)

To detect hIGF-I by sandwich ELISA (using 100 µl/well antibody solution) a concentration of 0.5 - 2.0 µg/ml of this antibody is required. This antigen affinity purified antibody, in conjunction with Biotinylated Anti-Human IGF-I as a detection antibody, allows the detection of at least 0.2 - 0.4 ng/well of recombinant hIGF-I.



Immunohistochemistry (Formalin/PFA-fixed paraffin-embedded sections) - Anti-IGF1+IGF2 antibody  
(ab9572)

Immunohistochemistry (Formalin/PFA-fixed paraffin-embedded sections) analysis of human liver tissue labelling IGF1 with ab9572 at 1 µg/mL (45 minute incubation at room temperature). Heat mediated antigen retrieval was performed using a buffer at pH 6. An HRP-labeled polymer detection system was used with a DAB chromogen.

**Please note:** All products are "FOR RESEARCH USE ONLY. NOT FOR USE IN DIAGNOSTIC PROCEDURES"

### Our Abpromise to you: Quality guaranteed and expert technical support

- Replacement or refund for products not performing as stated on the datasheet
- Valid for 12 months from date of delivery
- Response to your inquiry within 24 hours
- We provide support in Chinese, English, French, German, Japanese and Spanish
- Extensive multi-media technical resources to help you
- We investigate all quality concerns to ensure our products perform to the highest standards

If the product does not perform as described on this datasheet, we will offer a refund or replacement. For full details of the Abpromise,

please visit <https://www.abcam.cn/abpromise> or contact our technical team.

## Terms and conditions

---

- Guarantee only valid for products bought direct from Abcam or one of our authorized distributors