


# Anti-IGF1 Receptor + Insulin Receptor antibody [EPR2334(2)] ab172965

 **RabMAb**

★★★★★ **1 Abreviews** **2 References** **3 图像**

## 概述

|       |  |
|-------|--|
| 产品名称  | Anti-IGF1 Receptor + Insulin Receptor抗体[EPR2334(2)]  |
| 描述    | 兔单克隆抗体[EPR2334(2)] to IGF1 Receptor + Insulin Receptor   |
| 宿主    | Rabbit   |
| 经测试应用 | <b>适用于:</b> WB, IP<br><b>不适用于:</b> Flow Cyt, ICC/IF or IHC-P   |
| 种属反应性 | <b>与反应:</b> Human<br><b>预测可用于:</b> Mouse, Rat   |
| 免疫原   | Synthetic peptide. This information is proprietary to Abcam and/or its suppliers.  |
| 阳性对照  | WB: 293T, HeLa, SK-OV-3, A549 cell lysates, fetal brain lysates.   |
| 常规说明  | This product is a recombinant monoclonal antibody, which offers several advantages including: <ul style="list-style-type: none"> <li>- High batch-to-batch consistency and reproducibility</li> <li>- Improved sensitivity and specificity</li> <li>- Long-term security of supply</li> <li>- Animal-free production</li> </ul> For more information <a href="#">see here</a> .<br>Our RabMAb <sup>®</sup> technology is a patented hybridoma-based technology for making rabbit monoclonal antibodies. For details on our patents, please refer to <a href="#">RabMAb<sup>®</sup> patents</a> . |

## 性能

|      |   |
|------|---|
| 形式   | Liquid  |
| 存放说明 | Shipped at 4°C. Store at +4°C short term (1-2 weeks). Upon delivery aliquot. Store at -20°C long term. Avoid freeze / thaw cycle.                   |
| 存储溶液 | pH: 7.20<br>Preservative: 0.01% Sodium azide<br>Constituents: 9% PBS, 40% Glycerol (glycerin, glycerine), 0.05% BSA, 50% Tissue culture supernatant |
| 纯度   | Protein A purified  |

|      |            |
|------|------------|
| 克隆   | 单克隆        |
| 克隆编号 | EPR2334(2) |
| 同种型  | IgG        |

应用

The Abpromise guarantee

Abpromise™承诺保证使用ab172965于以下的经测试应用

“应用说明”部分 下显示的仅为推荐的起始稀释度;实际最佳的稀释度/浓度应由使用者检定。

| 应用 | Ab评论      | 说明  |
|----|-----------|---|
| WB | ★★★★★ (1) | 1/10000 - 1/50000. Predicted molecular weight: 156 kDa. |
| IP |           | 1/10 - 1/100.   |

应用说明

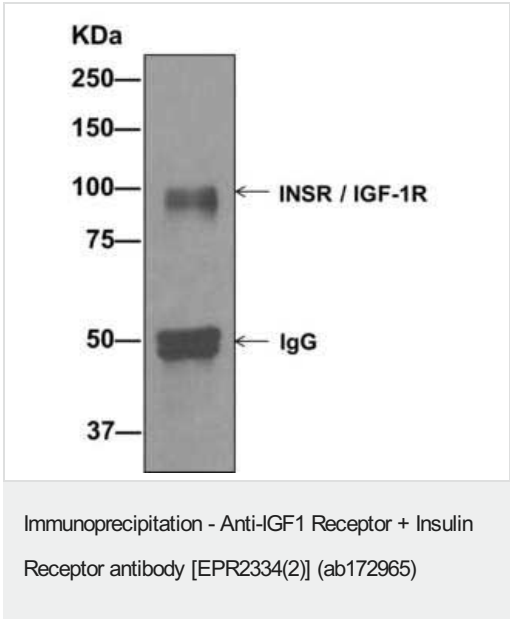
Is unsuitable for Flow Cyt,ICC/IF or IHC-P.

靶标

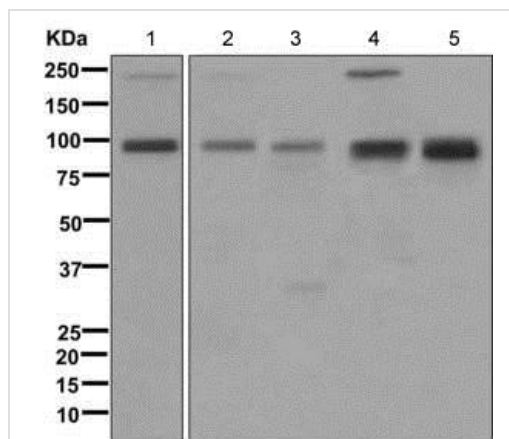
细胞定位

IGF1 Receptor: Cell membrane. Insulin Receptor: Cell membrane.

图片



Western blot analysis on immunoprecipitation pellet from 293T cell lysate using ab172965.



Western blot - Anti-IGF1 Receptor + Insulin  
Receptor antibody [EPR2334(2)] (ab172965)

**All lanes :** Anti-IGF1 Receptor + Insulin Receptor antibody  
[EPR2334(2)] (ab172965) at 1/10000 dilution

**Lane 1 :** 293T cell lysate

**Lane 2 :** HeLa cell lysate

**Lane 3 :** SK-OV-3 cell lysate

**Lane 4 :** A459 cell lysate

**Lane 5 :** Fetal brain lysate

Lysates/proteins at 10 µg per lane.

**Predicted band size:** 156 kDa

Why choose a  
recombinant antibody?



**Research with  
confidence**  
Consistent and  
reproducible results



**Long-term and  
scalable supply**  
Recombinant  
technology



**Success from the  
first experiment**  
Confirmed  
specificity



**Ethical standards  
compliant**  
Animal-free  
production

Anti-IGF1 Receptor + Insulin Receptor antibody  
[EPR2334(2)] (ab172965)

**Please note:** All products are "FOR RESEARCH USE ONLY. NOT FOR USE IN DIAGNOSTIC PROCEDURES"

## Our Abpromise to you: Quality guaranteed and expert technical support

- Replacement or refund for products not performing as stated on the datasheet
- Valid for 12 months from date of delivery
- Response to your inquiry within 24 hours
- We provide support in Chinese, English, French, German, Japanese and Spanish

- Extensive multi-media technical resources to help you
- We investigate all quality concerns to ensure our products perform to the highest standards

If the product does not perform as described on this datasheet, we will offer a refund or replacement. For full details of the Abpromise, please visit <https://www.abcam.cn/abpromise> or contact our technical team.

#### **Terms and conditions**

---

- Guarantee only valid for products bought direct from Abcam or one of our authorized distributors