

Anti-IgE antibody [5D4] ab7295

1 References 1 图像

概述	
产品名称	Anti-IgE抗体[5D4]
描述	小鼠单克隆抗体[5D4] to IgE
宿主	Mouse
特异性	Specific for IgE Ce2-domain specific
经测试应用	适用于: Sandwich ELISA
种属反应性	与反应: Human
免疫原	Full length native protein (purified) corresponding to Human IgE. IgE from myelomatous human serum.
常规说明	<p>Concentration varies from lot to lot and can be provided on request.</p> <p>The Life Science industry has been in the grips of a reproducibility crisis for a number of years. Abcam is leading the way in addressing this with our range of recombinant monoclonal antibodies and knockout edited cell lines for gold-standard validation. Please check that this product meets your needs before purchasing.</p> <p>If you have any questions, special requirements or concerns, please send us an inquiry and/or contact our Support team ahead of purchase. Recommended alternatives for this product can be found below, along with publications, customer reviews and Q&As</p>
性能	
形式	Liquid
存放说明	Shipped at 4°C. Upon delivery aliquot and store at -20°C. Avoid freeze / thaw cycles.
存储溶液	pH: 7.40 Preservative: 0.09% Sodium azide Constituent: 99.91% PBS
纯度	Protein A purified
纯化说明	Purified by chromatography on protein A Sepharose. Purity is tested by electrophoresis.
克隆	单克隆
克隆编号	5D4
骨髓瘤	Sp2/0
同种型	IgG2a

应用

The Abpromise guarantee **Abpromise™**承诺保证使用ab7295于以下的经测试应用

“应用说明”部分 下显示的仅为推荐的起始稀释度;实际最佳的稀释度/浓度应由使用者检定。

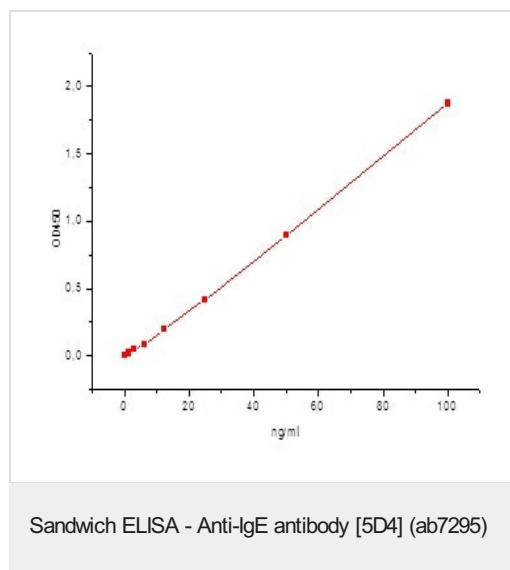
应用	Ab评论	说明
Sandwich ELISA		Use at an assay dependent concentration. Can be used as Capture antibody with recommended pair.

靶标

相关性 IgE is the class of antibodies produced in the lungs, skin, and mucous membranes. It may protect against parasite invasion, but it is a major factor in allergic reactions. The antigen-specific IgE interacts with mast cells and eosinophils, triggers the release of histamine, leukotrienes and other substances that lead to the itching, sneezing and congestion of allergies - and the life threatening respiratory distress of asthma and anaphylactic shock.

细胞定位 Cell Membrane

图片



Standard curve: Capture antibody (ab7295) at 5 ug/ml in PBS, human IgE from 100 ng/ml to 1.56 ng/ml, detection antibody (**ab7294**, HRP conjugated) at 0.7 ug/ml concentration.

Please note: All products are "FOR RESEARCH USE ONLY. NOT FOR USE IN DIAGNOSTIC PROCEDURES"

Our Abpromise to you: Quality guaranteed and expert technical support

- Replacement or refund for products not performing as stated on the datasheet
- Valid for 12 months from date of delivery
- Response to your inquiry within 24 hours

- We provide support in Chinese, English, French, German, Japanese and Spanish
- Extensive multi-media technical resources to help you
- We investigate all quality concerns to ensure our products perform to the highest standards

If the product does not perform as described on this datasheet, we will offer a refund or replacement. For full details of the Abpromise, please visit <https://www.abcam.cn/abpromise> or contact our technical team.

Terms and conditions

- Guarantee only valid for products bought direct from Abcam or one of our authorized distributors