


Anti-IgA Secretory Component antibody [SPM217] ab17921

1 References **1 图像**

概述

| | |
|-------|---|
| 产品名称 | Anti-IgA Secretory Component抗体[SPM217] |
| 描述 | 小鼠单克隆抗体[SPM217] to IgA Secretory Component |
| 宿主 | Mouse |
| 经测试应用 | 适用于: ICC/IF, IHC-P |
| 种属反应性 | 与反应: Human 预测可用于: Rat  |
| 免疫原 | Full length native protein (purified) corresponding to Human IgA Secretory Component. Secretory Component protein isolated from human colostrum. |
| 表位 | Not determined |
| 阳性对照 | Stomach, Lung, or breast tumor. |
| 常规说明 | <p>The Life Science industry has been in the grips of a reproducibility crisis for a number of years. Abcam is leading the way in addressing this with our range of recombinant monoclonal antibodies and knockout edited cell lines for gold-standard validation. Please check that this product meets your needs before purchasing.</p> <p>If you have any questions, special requirements or concerns, please send us an inquiry and/or contact our Support team ahead of purchase. Recommended alternatives for this product can be found below, along with publications, customer reviews and Q&As</p> |

性能

| | |
|------|--|
| 形式 | Liquid |
| 存放说明 | Shipped at 4°C. Upon delivery aliquot and store at -20°C. Avoid repeated freeze / thaw cycles. |
| 存储溶液 | pH: 7.2 Preservative: 0.09% Sodium azide Constituents: 0.0268% PBS, BSA |
| 纯度 | Protein G purified |
| 克隆 | 单克隆 |
| 克隆编号 | SPM217 |
| 同种型 | IgG1 |
| 轻链类型 | kappa |

应用

The Abpromise guarantee **Abpromise™**承诺保证使用ab17921于以下的经测试应用

“应用说明”部分 下显示的仅为推荐的起始稀释度;实际最佳的稀释度/浓度应由使用者检定。

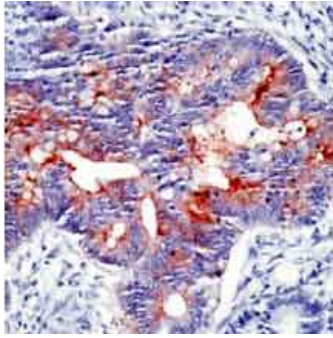
| 应用 | Ab评论 | 说明 |
|--------|------|---|
| ICC/IF | | Use at an assay dependent concentration. |
| IHC-P | | 1/50. Perform enzymatic antigen retrieval before commencing with IHC staining protocol. |

靶标

相关性

IgA has two subclasses (IgA1 and IgA2) and can be produced as a monomeric as well as a dimeric form. The IgA dimeric form is the most prevalent and is also called secretory IgA (sIgA). The secretory component of sIgA protects the immunoglobulin from being degraded by proteolytic enzymes, thus sIgA can survive in the harsh gastrointestinal tract environment and provide protection against microbes that multiply in body secretions. sIgA can also inhibit inflammatory effects of other immunoglobulins. Secretory component is a proteolytic cleavage product of the polymeric immunoglobulin receptor which remains associated with dimeric IgA in sero-mucus secretions. Polymeric IgA binds to the polymeric immunoglobulin receptor on the basolateral surface of epithelial cells and is taken up into the cell via transcytosis. The receptor-IgA complex passes through the cellular compartments before being secreted on the luminal surface of the epithelial cells, still attached to the receptor. Proteolysis of the receptor occurs and the dimeric IgA molecule, along with the secretory component, are free to diffuse throughout the lumen. Secretory components wrap around two IgA units joined by a J chain protein fragment, resulting in a >--< configuration, with each of the two antigen binding regions of the two constituent y-shaped antibodies exposed. One identified function of secretory components is to protect IgA antibodies from degradation by the gastric acids and enzymes of the digestive system. This property is especially important in the transfer of immune system components during breastfeeding.

图片



Human colon carcinoma stained with ab17921.

Immunohistochemistry (Formalin/PFA-fixed paraffin-embedded sections) - Anti-IgA Secretory Component antibody [SPM217] (ab17921)

Please note: All products are "FOR RESEARCH USE ONLY. NOT FOR USE IN DIAGNOSTIC PROCEDURES"

Our Abpromise to you: Quality guaranteed and expert technical support

- Replacement or refund for products not performing as stated on the datasheet
- Valid for 12 months from date of delivery
- Response to your inquiry within 24 hours
- We provide support in Chinese, English, French, German, Japanese and Spanish
- Extensive multi-media technical resources to help you
- We investigate all quality concerns to ensure our products perform to the highest standards

If the product does not perform as described on this datasheet, we will offer a refund or replacement. For full details of the Abpromise, please visit <https://www.abcam.cn/abpromise> or contact our technical team.

Terms and conditions

- Guarantee only valid for products bought direct from Abcam or one of our authorized distributors