

Anti-IgA Secretory Component antibody [SC-05] ab3924

★★★★★ [1 Abreviews](#) [5 References](#) [1 图像](#)

概述

产品名称	Anti-IgA Secretory Component抗体[SC-05]
描述	小鼠单克隆抗体[SC-05] to IgA Secretory Component
宿主	Mouse
特异性	ab3924 reacts with 80 kDa human secretory component glycoprotein (both free and bound in secretory IgA). The recognized glycoprotein is a specific membrane marker of glandular carcinomas.
经测试应用	适用于: WB
种属反应性	与反应: Human
免疫原	Full length native protein (purified) corresponding to Human IgA Secretory Component. Affinity-purified secretory component from human colostrum.
阳性对照	WB: MCF7 and MDA-MB-361 cell lysates.
常规说明	<p>Examples of positive human tissues: secretory mucosa of gastrointestinal and respiratory tract, epithelia of salivary glands, endometrium, endocervix, kidney, prostate, mammary gland.</p> <p>The Life Science industry has been in the grips of a reproducibility crisis for a number of years. Abcam is leading the way in addressing this with our range of recombinant monoclonal antibodies and knockout edited cell lines for gold-standard validation. Please check that this product meets your needs before purchasing.</p> <p>If you have any questions, special requirements or concerns, please send us an inquiry and/or contact our Support team ahead of purchase. Recommended alternatives for this product can be found below, along with publications, customer reviews and Q&As</p>

性能

形式	Liquid
存放说明	Shipped at 4°C. Store at +4°C short term (1-2 weeks). Upon delivery aliquot. Store at -20°C or -80°C. Avoid freeze / thaw cycle.
存储溶液	pH: 7.40 Preservative: 0.097% Sodium azide Constituent: PBS
纯度	Protein A purified

纯化说明	Purified from hybridoma culture supernatant. Purity >95% by SDS-PAGE.
Primary antibody说明	Examples of positive human tissues: secretory mucosa of gastrointestinal and respiratory tract, epithelia of salivary glands, endometrium, endocervix, kidney, prostate, mammary gland.
克隆	单克隆
克隆编号	SC-05
同种型	IgG1

应用

The Abpromise guarantee Abpromise™承诺保证使用ab3924于以下的经测试应用

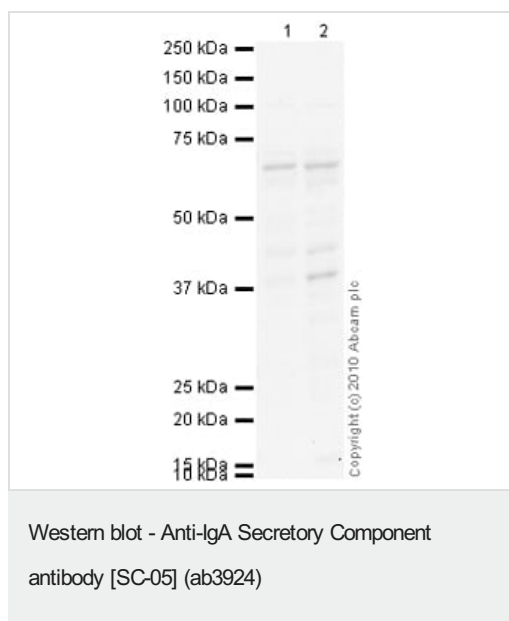
“应用说明”部分 下显示的仅为推荐的起始稀释度;实际最佳的稀释度/浓度应由使用者检定。

应用	Ab评论	说明
WB		Use a concentration of 1 - 2 µg/ml. Detects a band of approximately 68 kDa (predicted molecular weight: 61 kDa). See Abreview. Use under non-reducing conditions.

靶标

相关性	<p>IgA has two subclasses (IgA1 and IgA2) and can be produced as a monomeric as well as a dimeric form. The IgA dimeric form is the most prevalent and is also called secretory IgA (sIgA). The secretory component of sIgA protects the immunoglobulin from being degraded by proteolytic enzymes, thus sIgA can survive in the harsh gastrointestinal tract environment and provide protection against microbes that multiply in body secretions. sIgA can also inhibit inflammatory effects of other immunoglobulins. Secretory component is a proteolytic cleavage product of the polymeric immunoglobulin receptor which remains associated with dimeric IgA in sero-mucus secretions. Polymeric IgA binds to the polymeric immunoglobulin receptor on the basolateral surface of epithelial cells and is taken up into the cell via transcytosis. The receptor-IgA complex passes through the cellular compartments before being secreted on the luminal surface of the epithelial cells, still attached to the receptor. Proteolysis of the receptor occurs and the dimeric IgA molecule, along with the secretory component, are free to diffuse throughout the lumen. Secretory components wrap around two IgA units joined by a J chain protein fragment, resulting in a >--< configuration, with each of the two antigen binding regions of the two constituent y-shaped antibodies exposed. One identified function of secretory components is to protect IgA antibodies from degradation by the gastric acids and enzymes of the digestive system. This property is especially important in the transfer of immune system components during breastfeeding.</p>
-----	---

图片



All lanes : Anti-IgA Secretory Component antibody [SC-05] (ab3924) at 1 µg/ml

Lane 1 : MCF7 (Human breast adenocarcinoma cell line) Whole Cell Lysate

Lane 2 : MDA-MB-361 (Human breast adenocarcinoma cell line) Whole Cell Lysate Whole Cell Lysate

Lysates/proteins at 10 µg per lane.

Secondary

All lanes : Goat Anti-Mouse IgG H&L (HRP) preadsorbed (**ab97040**) at 1/5000 dilution

Developed using the ECL technique.

Performed under reducing conditions.

Predicted band size: 61 kDa

Observed band size: 68 kDa

Additional bands at: 38 kDa. We are unsure as to the identity of these extra bands.

Exposure time: 20 minutes

Secretory Component Glycoprotein contains a number of potential glycosylation sites (SwissProt) which may explain its migration at a higher molecular weight than predicted.

Please note: All products are "FOR RESEARCH USE ONLY. NOT FOR USE IN DIAGNOSTIC PROCEDURES"

Our Abpromise to you: Quality guaranteed and expert technical support

- Replacement or refund for products not performing as stated on the datasheet
- Valid for 12 months from date of delivery
- Response to your inquiry within 24 hours

- We provide support in Chinese, English, French, German, Japanese and Spanish
- Extensive multi-media technical resources to help you
- We investigate all quality concerns to ensure our products perform to the highest standards

If the product does not perform as described on this datasheet, we will offer a refund or replacement. For full details of the Abpromise, please visit <https://www.abcam.cn/abpromise> or contact our technical team.

Terms and conditions

- Guarantee only valid for products bought direct from Abcam or one of our authorized distributors