


Anti-IFN gamma Receptor beta/AF-1 antibody ab77246

8 References **1 图像**

概述

产品名称	Anti-IFN gamma Receptor beta/AF-1抗体
描述	兔多克隆抗体to IFN gamma Receptor beta/AF-1
宿主	Rabbit
经测试应用	适用于: WB
种属反应性	与反应: Mouse, Human 预测可用于: Cow, Pig, Baboon, Deer 
免疫原	Synthetic peptide corresponding to Human IFN gamma Receptor beta/AF-1 aa 250 to the C-terminus conjugated to keyhole limpet haemocyanin. (Peptide available as ab90070)
阳性对照	This antibody gave a positive signal in the following lysates: Tissues: Human spinal cord; Mouse liver; Human skeletal muscle; Mouse kidney. Whole cell: Hela nuclear; F9; A431
常规说明	<p>The Life Science industry has been in the grips of a reproducibility crisis for a number of years. Abcam is leading the way in addressing this with our range of recombinant monoclonal antibodies and knockout edited cell lines for gold-standard validation. Please check that this product meets your needs before purchasing.</p> <p>If you have any questions, special requirements or concerns, please send us an inquiry and/or contact our Support team ahead of purchase. Recommended alternatives for this product can be found below, along with publications, customer reviews and Q&As</p>

性能

形式	Liquid
存放说明	Shipped at 4°C. Store at +4°C short term (1-2 weeks). Upon delivery aliquot. Store at -20°C or -80°C. Avoid freeze / thaw cycle.
存储溶液	pH: 7.40 Preservative: 0.02% Sodium azide Constituent: PBS
	Batches of this product that have a concentration < 1mg/ml may have BSA added as a stabilising agent. If you would like information about the formulation of a specific lot, please contact our scientific support team who will be happy to help.

纯度	Immunogen affinity purified
克隆	多克隆
同种型	IgG

应用

The Abpromise guarantee **Abpromise™**承诺保证使用ab77246于以下的经测试应用

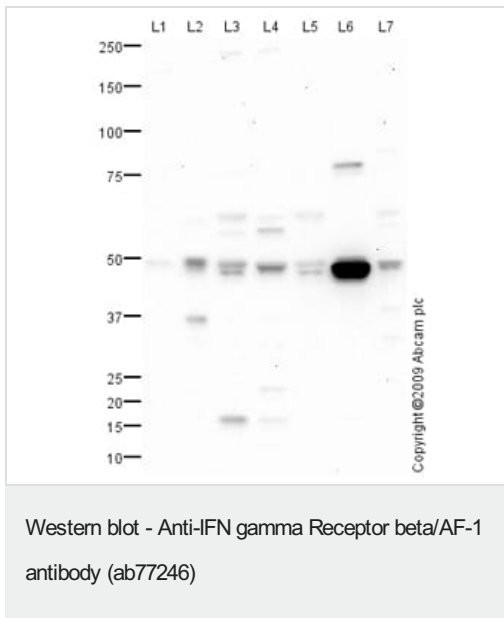
“应用说明”部分 下显示的仅为推荐的起始稀释度;实际最佳的稀释度/浓度应由使用者检定。

应用	Ab评论	说明
WB		Use a concentration of 1 µg/ml. Detects a band of approximately 49 kDa (predicted molecular weight: 38 kDa).

靶标

功能	Part of the receptor for interferon gamma. Required for signal transduction. This accessory factor is an integral part of the IFN-gamma signal transduction pathway and is likely to interact with GAF, JAK1, and/or JAK2.
疾病相关	Defects in IFNGR2 are a cause of mendelian susceptibility to mycobacterial disease (MSMD) [MIM:209950]; also known as familial disseminated atypical mycobacterial infection. This rare condition confers predisposition to illness caused by moderately virulent mycobacterial species, such as Bacillus Calmette-Guerin (BCG) vaccine and environmental non-tuberculous mycobacteria, and by the more virulent Mycobacterium tuberculosis. Other microorganisms rarely cause severe clinical disease in individuals with susceptibility to mycobacterial infections, with the exception of Salmonella which infects less than 50% of these individuals. The pathogenic mechanism underlying MSMD is the impairment of interferon-gamma mediated immunity, whose severity determines the clinical outcome. Some patients die of overwhelming mycobacterial disease with lepromatous-like lesions in early childhood, whereas others develop, later in life, disseminated but curable infections with tuberculoid granulomas. MSMD is a genetically heterogeneous disease with autosomal recessive, autosomal dominant or X-linked inheritance.
序列相似性	Belongs to the type II cytokine receptor family. Contains 2 fibronectin type-III domains.
细胞定位	Membrane.

图片



All lanes : Anti-IFN gamma Receptor beta/AF-1 antibody (ab77246) at 1 µg/ml

Lane 1 : Human spinal cord tissue lysate - total protein ([ab29188](#))

Lane 2 : Liver (Mouse) Tissue Lysate

Lane 3 : HeLa (Human epithelial carcinoma cell line) Nuclear Lysate

Lane 4 : F9 (Mouse embryonic carcinoma cell line)

Lane 5 : A431 (Human epithelial carcinoma cell line) Whole Cell Lysate

Lane 6 : Human skeletal muscle tissue lysate - total protein ([ab29330](#))

Lane 7 : Kidney (Mouse) Tissue Lysate

Lysates/proteins at 10 µg per lane.

Secondary

All lanes : Goat polyclonal to Rabbit IgG - H&L - Pre-Adsorbed (HRP) at 1/3000 dilution

Developed using the ECL technique.

Performed under reducing conditions.

Predicted band size: 38 kDa

Observed band size: 49 kDa

Additional bands at: 16 kDa, 48 kDa (possible cleavage fragment), 77 kDa. We are unsure as to the identity of these extra bands.

Exposure time: 2 minutes

Interferon-gamma receptor beta chain has a predicted molecular weight of 38 kDa, however it is extensively glycosylated and has been shown to run in the 49 kDa region (SwissProt data). The

bands present at 48 kDa are representative of the protein minus its 27 amino acid signal peptide. Abcam welcomes customer feedback and would appreciate any comments regarding this product and the data presented above.

Please note: All products are "FOR RESEARCH USE ONLY. NOT FOR USE IN DIAGNOSTIC PROCEDURES"

Our Abpromise to you: Quality guaranteed and expert technical support

- Replacement or refund for products not performing as stated on the datasheet
- Valid for 12 months from date of delivery
- Response to your inquiry within 24 hours
- We provide support in Chinese, English, French, German, Japanese and Spanish
- Extensive multi-media technical resources to help you
- We investigate all quality concerns to ensure our products perform to the highest standards

If the product does not perform as described on this datasheet, we will offer a refund or replacement. For full details of the Abpromise, please visit <https://www.abcam.cn/abpromise> or contact our technical team.

Terms and conditions

- Guarantee only valid for products bought direct from Abcam or one of our authorized distributors