

Anti-IDH1 antibody ab137568

6 图像

概述

产品名称	Anti-IDH1抗体
描述	兔多克隆抗体to IDH1
宿主	Rabbit
经测试应用	适用于: IHC-P, WB
种属反应性	与反应: Mouse, Rat, Human
免疫原	Recombinant fragment corresponding to Human IDH1 aa 30-337.
阳性对照	WB: A431, HepG2, JC, or C2C12 cell lysates IHC-P: Human Colon carcinoma tissue; Mouse brain tissue; Rat duodenum tissue.
常规说明	Keep as concentrated solution. The Life Science industry has been in the grips of a reproducibility crisis for a number of years. Abcam is leading the way in addressing this with our range of recombinant monoclonal antibodies and knockout edited cell lines for gold-standard validation. Please check that this product meets your needs before purchasing. If you have any questions, special requirements or concerns, please send us an inquiry and/or contact our Support team ahead of purchase. Recommended alternatives for this product can be found below, along with publications, customer reviews and Q&As

性能

形式	Liquid
存放说明	Shipped at 4°C. Upon delivery aliquot and store at -20°C or -80°C. Avoid repeated freeze / thaw cycles.
存储溶液	pH: 7.00 Preservative: 0.025% Proclin 300 Constituents: 79% PBS, 20% Glycerol (glycerin, glycerine)
纯度	Immunogen affinity purified
克隆	多克隆
同种型	IgG

应用

The Abpromise guarantee

Abpromise™承诺保证使用ab137568于以下的经测试应用

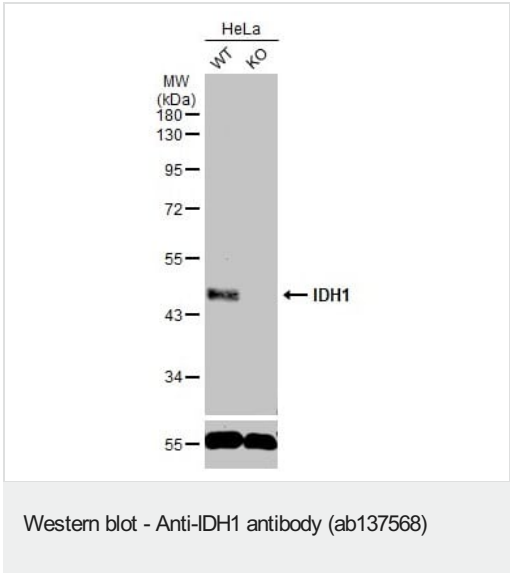
“应用说明”部分 下显示的仅为推荐的起始稀释度;实际最佳的稀释度/浓度应由使用者检定。

应用	Ab评论	说明
IHC-P		1/100 - 1/1000. Perform heat mediated antigen retrieval before commencing with IHC staining protocol. Suggested antigen retrieval using heat mediated 10mM citrate buffer (pH6.0) or Tris-EDTA buffer (pH8.0).
WB		1/500 - 1/3000. Detects a band of approximately 47 kDa (predicted molecular weight: 46 kDa).

靶标

疾病相关	<p>Glioma</p> <p>Genetic variations are associated with cartilaginous tumors such as enchondroma or chondrosarcoma. Mutations of Arg-132 to Cys, Gly or His abolish the conversion of isocitrate to alpha-ketoglutarate. Instead, alpha-ketoglutarate is converted to R(-)-2-hydroxyglutarate.</p>
序列相似性	<p>Belongs to the isocitrate and isopropylmalate dehydrogenases family.</p>
翻译后修饰	<p>Acetylation at Lys-374 dramatically reduces catalytic activity.</p>
细胞定位	<p>Cytoplasm. Peroxisome.</p>

图片



All lanes : Anti-IDH1 antibody (ab137568) at 1/500 dilution

Lane 1 : Wild-type HeLa whole cell lysate

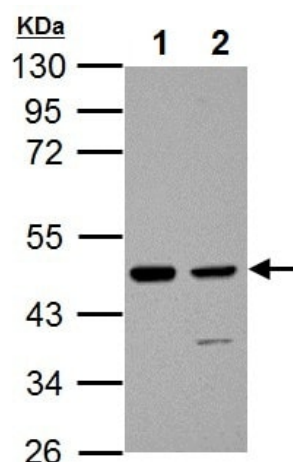
Lane 2 : IDH1 knockout HeLa whole cell lysate

Lysates/proteins at 30 µg per lane.

Secondary

All lanes : HRP-conjugated anti-rabbit IgG

Predicted band size: 46 kDa



Western blot - Anti-IDH1 antibody (ab137568)

All lanes : Anti-IDH1 antibody (ab137568) at 1/1000 dilution

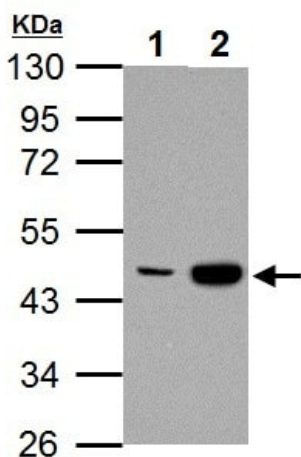
Lane 1 : JC whole cell lysate

Lane 2 : C2C12 whole cell lysate

Lysates/proteins at 30 µg per lane.

Predicted band size: 46 kDa

10% SDS PAGE



Western blot - Anti-IDH1 antibody (ab137568)

All lanes : Anti-IDH1 antibody (ab137568) at 1/1000 dilution

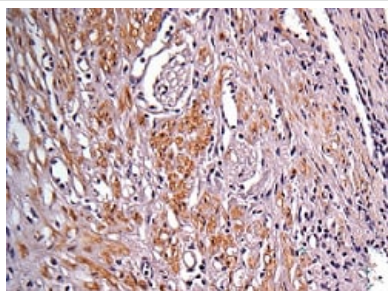
Lane 1 : A431 whole cell lysate

Lane 2 : HepG2 whole cell lysate

Lysates/proteins at 30 µg per lane.

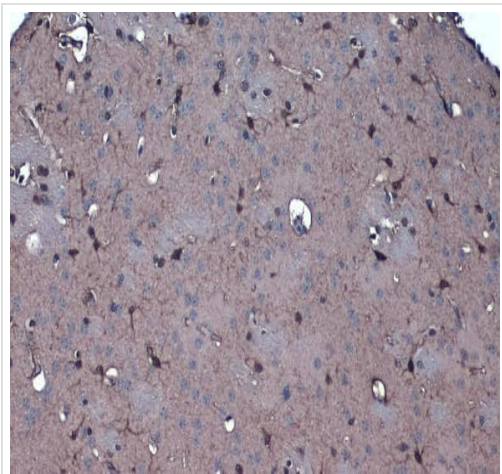
Predicted band size: 46 kDa

10% SDS PAGE



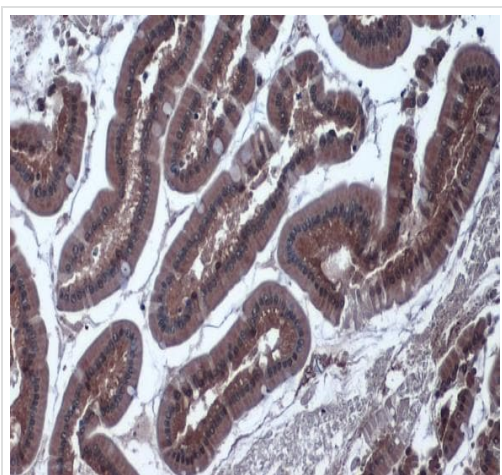
Immunohistochemistry (Formalin/PFA-fixed paraffin-embedded sections) - Anti-IDH1 antibody (ab137568)

Immunohistochemical analysis of paraffin embedded human colon carcinoma, labelling IDH1 with ab137568 at 1/100 dilution.



Immunohistochemistry (Formalin/PFA-fixed paraffin-embedded sections) - Anti-IDH1 antibody (ab137568)

Immunohistochemical analysis of paraffin embedded mouse brain tissue labelling IDH1 with ab137568 at 1/1000 dilution. Antigen retrieval was performed with citrate buffer, pH 6.0, 15 minutes.



Immunohistochemistry (Formalin/PFA-fixed paraffin-embedded sections) - Anti-IDH1 antibody (ab137568)

Immunohistochemical analysis of paraffin embedded rat duodenum tissue labelling IDH1 with ab137568 at 1/1000 dilution. Antigen retrieval was performed with citrate buffer, pH 6.0, 15 minutes.

Please note: All products are "FOR RESEARCH USE ONLY. NOT FOR USE IN DIAGNOSTIC PROCEDURES"

Our Abpromise to you: Quality guaranteed and expert technical support

- Replacement or refund for products not performing as stated on the datasheet
- Valid for 12 months from date of delivery
- Response to your inquiry within 24 hours
- We provide support in Chinese, English, French, German, Japanese and Spanish
- Extensive multi-media technical resources to help you
- We investigate all quality concerns to ensure our products perform to the highest standards

If the product does not perform as described on this datasheet, we will offer a refund or replacement. For full details of the Abpromise,

please visit <https://www.abcam.cn/abpromise> or contact our technical team.

Terms and conditions

- Guarantee only valid for products bought direct from Abcam or one of our authorized distributors