


### Anti-ID2 antibody [4E12G5] ab166708

★★★★★ [1 Abreviews](#) [8 References](#) [4 图像](#)

#### 概述

产品名称	Anti-ID2抗体[4E12G5]
描述	小鼠单克隆抗体[4E12G5] to ID2
宿主	Mouse
经测试应用	适用于: WB, IHC-P, Flow Cyt
种属反应性	与反应: Human 预测可用于: Mouse, Rat, Cow, Pig, Chimpanzee, Cynomolgus monkey, Orangutan 
免疫原	Purified recombinant full length protein, corresponding to amino acids 1-134 of Human ID2, expressed in E. coli (UniProt: Q02363). <a href="#">Run BLAST with Expasy</a> <a href="#">Run BLAST with NCBI</a>
阳性对照	Human recombinant ID2 protein; SK N SH cells; Human breast cancer and rectum cancer tissues.
常规说明	<p>The Life Science industry has been in the grips of a reproducibility crisis for a number of years. Abcam is leading the way in addressing this with our range of recombinant monoclonal antibodies and knockout edited cell lines for gold-standard validation. Please check that this product meets your needs before purchasing.</p> <p>If you have any questions, special requirements or concerns, please send us an inquiry and/or contact our Support team ahead of purchase. Recommended alternatives for this product can be found below, along with publications, customer reviews and Q&amp;As</p>

#### 性能

形式	Liquid
存放说明	Shipped at 4°C. Upon delivery aliquot and store at -20°C. Avoid repeated freeze / thaw cycles.
存储溶液	Preservative: 0.05% Sodium azide Constituent: PBS
纯度	Protein G purified
克隆	单克隆
克隆编号	4E12G5
同种型	IgG1

**The Abpromise guarantee**      **Abpromise™**承诺保证使用ab166708于以下的经测试应用

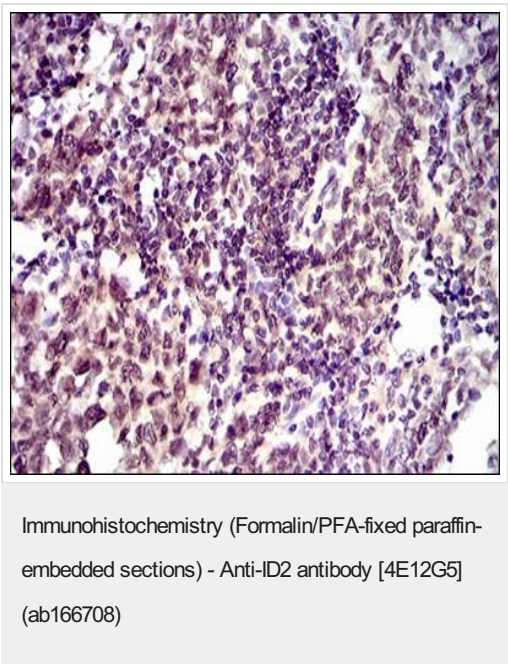
“应用说明”部分 下显示的仅为推荐的起始稀释度;实际最佳的稀释度/浓度应由使用者检定。

应用	Ab评论	说明
WB		1/500 - 1/2000. Predicted molecular weight: 17.3 kDa.
IHC-P	★★★★★ (1)	1/200 - 1/1000.
Flow Cyt		1/200 - 1/400. <b>ab170190</b> - Mouse monoclonal IgG1, is suitable for use as an isotype control with this antibody.

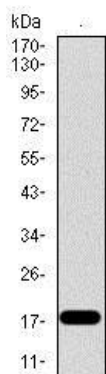
靶标

功能	ID (inhibitor of DNA binding) HLH proteins lack a basic DNA-binding domain but are able to form heterodimers with other HLH proteins, thereby inhibiting DNA binding. ID-2 may be an inhibitor of tissue-specific gene expression.
组织特异性	Highly expressed in early fetal tissues, including those of the central nervous system.
序列相似性	Contains 1 basic helix-loop-helix (bHLH) domain.
发展阶段	Found in most early fetal tissues but not in the corresponding mature tissues.
细胞定位	Cytoplasm. Nucleus.

图片



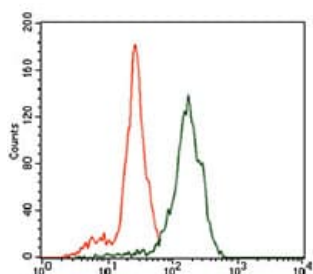
Immunohistochemical analysis of paraffin embedded, DAB-stained Human breast cancer tissue labeling ID2 using ab166708 at a 1/200 dilution.



Western blot - Anti-ID2 antibody [4E12G5]  
(ab166708)

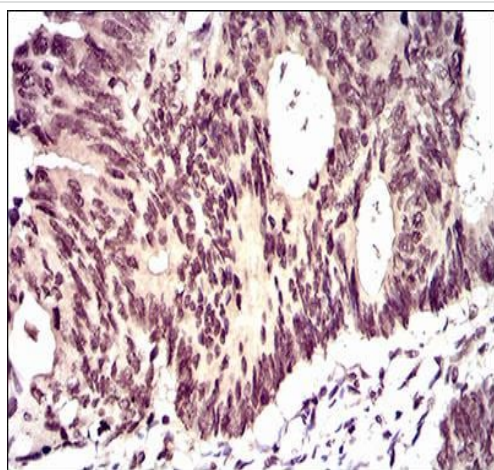
Anti-ID2 antibody [4E12G5] (ab166708) at 1/500 dilution +  
recombinant Human ID2 protein at 1 µg

**Predicted band size:** 17.3 kDa



Flow Cytometry - Anti-ID2 antibody [4E12G5]  
(ab166708)

Flow cytometric analysis of ID2-labeled SK N SH cells (green) and  
negative control cells (red), using ab166708 at a 1/200 dilution.



Immunohistochemistry (Formalin/PFA-fixed paraffin-  
embedded sections) - Anti-ID2 antibody [4E12G5]  
(ab166708)

Immunohistochemical analysis of paraffin embedded, DAB-stained  
Human rectum cancer tissue labeling ID2 using ab166708 at a  
1/200 dilution.

**Please note:** All products are "FOR RESEARCH USE ONLY. NOT FOR USE IN DIAGNOSTIC PROCEDURES"

### **Our Abpromise to you: Quality guaranteed and expert technical support**

---

- Replacement or refund for products not performing as stated on the datasheet
- Valid for 12 months from date of delivery
- Response to your inquiry within 24 hours
  
- We provide support in Chinese, English, French, German, Japanese and Spanish
- Extensive multi-media technical resources to help you
- We investigate all quality concerns to ensure our products perform to the highest standards

If the product does not perform as described on this datasheet, we will offer a refund or replacement. For full details of the Abpromise, please visit <https://www.abcam.cn/abpromise> or contact our technical team.

### **Terms and conditions**

---

- Guarantee only valid for products bought direct from Abcam or one of our authorized distributors