

Anti-Iba1 antibody [EPR6136(2)] ab178680

重组 RabMAb

1 Abreviews **25 References** **8 图像**

概述

产品名称	Anti-Iba1 抗体[EPR6136(2)]
描述	兔单克隆抗体[EPR6136(2)] to Iba1
宿主	Rabbit
经测试应用	适用于: Flow Cyt (Intra), ICC/IF, IHC-P, WB
种属反应性	与反应: Human
免疫原	Synthetic peptide. This information is proprietary to Abcam and/or its suppliers.
阳性对照	WB: THP-1 cell lysate. Flow Cyt (Intra): K-562 cells. ICC/IF: Jurkat cells. IHC-P: Human kidney, Human tonsil, human glioma and Human cerebrum tissues.
常规说明	<p>This product is a recombinant monoclonal antibody, which offers several advantages including:</p> <ul style="list-style-type: none"> - High batch-to-batch consistency and reproducibility - Improved sensitivity and specificity - Long-term security of supply - Animal-free production <p>For more information see here.</p> <p>Our RabMAb[®] technology is a patented hybridoma-based technology for making rabbit monoclonal antibodies. For details on our patents, please refer to RabMAb[®] patents.</p>

性能

形式	Liquid
存放说明	Shipped at 4°C. Store at +4°C short term (1-2 weeks). Upon delivery aliquot. Store at -20°C long term. Avoid freeze / thaw cycle.
存储溶液	<p>pH: 7.20</p> <p>Preservative: 0.01% Sodium azide</p> <p>Constituents: 59% PBS, 40% Glycerol (glycerin, glycerine), 0.05% BSA</p>
纯度	Protein A purified
克隆	单克隆
克隆编号	EPR6136(2)
同种型	IgG

应用

The Abpromise guarantee Abpromise™承诺保证使用ab178680于以下的经测试应用

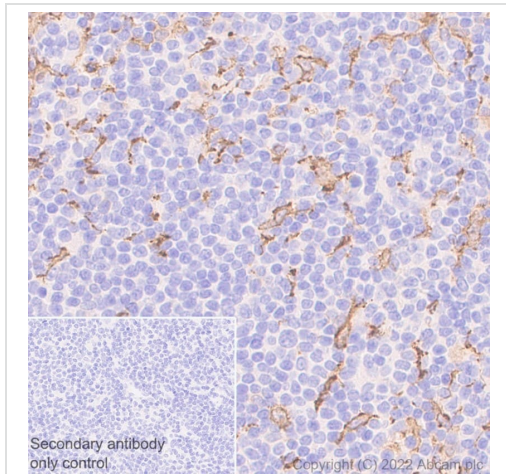
“应用说明”部分 下显示的仅为推荐的起始稀释度;实际最佳的稀释度/浓度应由使用者检定。

应用	Ab评论	说明
Flow Cyt (Intra)		1/100 - 1/500. ab172730 - Rabbit monoclonal IgG, is suitable for use as an isotype control with this antibody.
ICC/IF		1/100.
IHC-P		1/16000. Perform heat mediated antigen retrieval with citrate buffer pH 6 before commencing with IHC staining protocol. For unpurified use at 1/250 - 1/500.
WB		1/1000. Detects a band of approximately 17 kDa (predicted molecular weight: 16 kDa).

靶标

功能	Actin-binding protein that enhances membrane ruffling and RAC activation. Enhances the actin-bundling activity of LCP1. Binds calcium. Plays a role in RAC signaling and in phagocytosis. May play a role in macrophage activation and function. Promotes the proliferation of vascular smooth muscle cells and of T-lymphocytes. Enhances lymphocyte migration. Plays a role in vascular inflammation.
组织特异性	Detected in T-lymphocytes and peripheral blood mononuclear cells.
序列相似性	Contains 2 EF-hand domains.
翻译后修饰	Phosphorylated on serine residues.
细胞定位	Cytoplasm > cytoskeleton. Cell projection > ruffle membrane. Associated with the actin cytoskeleton at membrane ruffles and at sites of phagocytosis.

图片



Immunohistochemistry (Formalin/PFA-fixed paraffin-embedded sections) - Anti-Iba1 antibody [EPR6136(2)] (ab178680)

Immunohistochemical analysis of Paraffin-embedded sections Human tonsil tissue labelling Iba1 with ab178680 at 1/100000 dilution, followed by a ready to use secondary LeicaDS9800 (Bond™ Polymer Refine Detection). Counter stained with Haematoxylin.

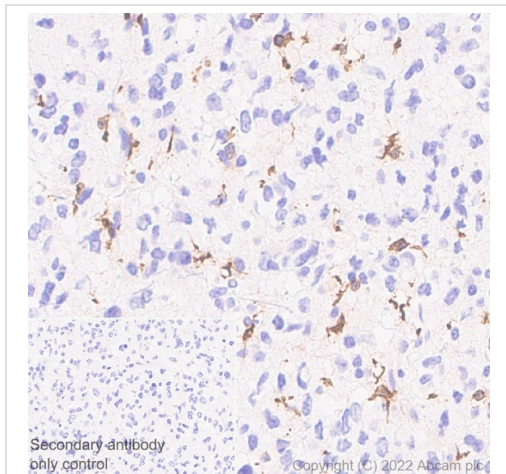
Secondary antibody only control: Used PBS instead of primary antibody, secondary antibody is ready to use LeicaDS9800 (Bond™ Polymer Refine Detection).

Heat mediated antigen retrieval using Bond™ Epitope Retrieval Solution 2 (pH 9.0) for 20 minutes.

Positive staining on human tonsil.

The section was incubated with ab178680 for 30 mins at room temperature.

The immunostaining was performed on a Leica Biosystems BOND® RX instrument.



Immunohistochemistry (Formalin/PFA-fixed paraffin-embedded sections) - Anti-Iba1 antibody [EPR6136(2)] (ab178680)

Immunohistochemical analysis of Paraffin-embedded sections Human glioma tissue labelling Iba1 with ab178680 at 1/100000 dilution, followed by a ready to use secondary LeicaDS9800 (Bond™ Polymer Refine Detection). Counter stained with Haematoxylin.

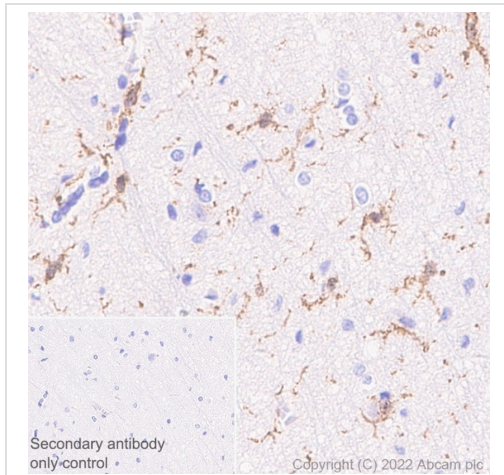
Secondary antibody only control: Used PBS instead of primary antibody, secondary antibody is ready to use LeicaDS9800 (Bond™ Polymer Refine Detection).

Heat mediated antigen retrieval using Bond™ Epitope Retrieval Solution 2 (pH 9.0) for 20 minutes.

Positive staining on human glioma.

The section was incubated with ab178680 for 30 mins at room temperature.

The immunostaining was performed on a Leica Biosystems BOND® RX instrument.



Immunohistochemistry (Formalin/PFA-fixed paraffin-embedded sections) - Anti-Iba1 antibody [EPR6136(2)] (ab178680)

Immunohistochemical analysis of Paraffin-embedded sections
Human cerebrum tissue labelling Iba1 with ab178680 at 1/100000 dilution, followed by a ready to use secondary LeicaDS9800 (Bond™ Polymer Refine Detection). Counter stained with Haematoxylin.

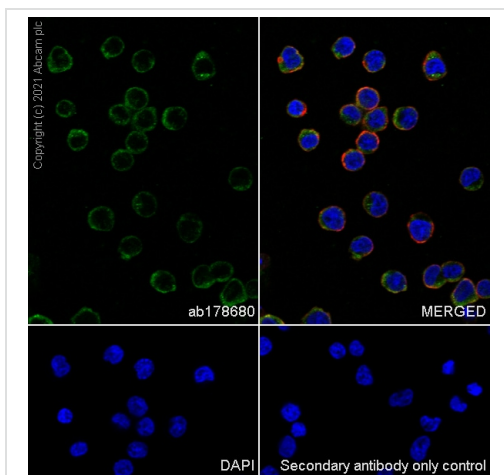
Secondary antibody only control: Used PBS instead of primary antibody, secondary antibody is ready to use LeicaDS9800 (Bond™ Polymer Refine Detection).

Heat mediated antigen retrieval using Bond™ Epitope Retrieval Solution 2 (pH 9.0) for 20 minutes.

Positive staining on human cerebrum.

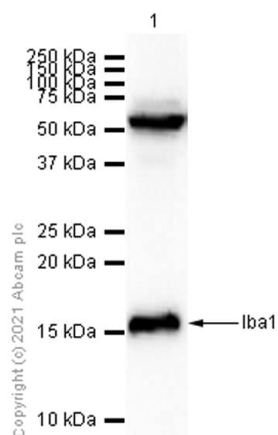
The section was incubated with ab178680 for 30 mins at room temperature.

The immunostaining was performed on a Leica Biosystems BOND® RX instrument



Immunocytochemistry/ Immunofluorescence - Anti-Iba1 antibody [EPR6136(2)] (ab178680)

Immunocytochemistry analysis of Jurkat (Human T cell leukemia T lymphocyte) cells labelling Iba1 with purified ab178680 at 1:100 dilution (9.7 µg/ml). Cells were fixed in 4% Paraformaldehyde and permeabilized with 0.1% tritonX-100. Cells were counterstained with Anti-alpha Tubulin antibody [DM1A] - Microtubule Marker (Alexa Fluor® 594) at 1/200 dilution (2.5 µg/ml) (**ab195889**) (red). Goat anti-rabbit IgG (Alexa Fluor® 488) (**ab150077**) was used as the secondary antibody at 1:1000 (2 µg/ml) dilution. DAPI (blue) was used as a nuclear counterstain. PBS instead of the primary antibody was used as the secondary antibody only control.



Western blot - Anti-Iba1 antibody [EPR6136(2)]
(ab178680)

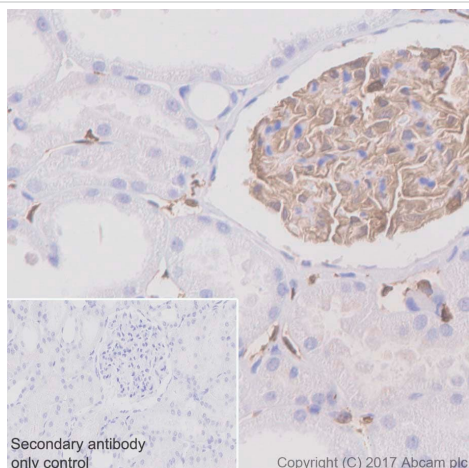
Anti-Iba1 antibody [EPR6136(2)] (ab178680) at 1/1000 dilution
(Purified) + THP-1 (Human monocytic leukemia monocyte) whole
cell lysate at 20 µg

Secondary

Goat Anti-Rabbit IgG H&L (HRP) ([ab97051](#)) at 1/20000 dilution

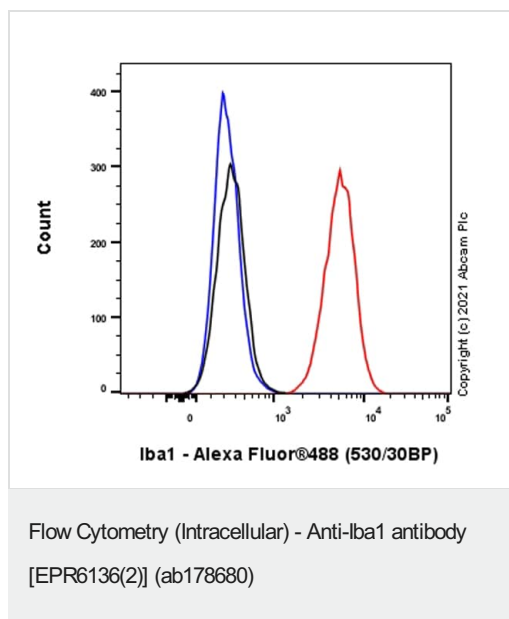
Predicted band size: 16 kDa

Observed band size: 17 kDa







Immunohistochemistry (Formalin/PFA-fixed paraffin-
embedded sections) - Anti-Iba1 antibody
[EPR6136(2)] (ab178680)

Immunohistochemistry (Formalin/PFA-fixed paraffin-embedded
sections) analysis of human kidney tissue sections labeling Iba1
with purified ab178680 at 1:16000 (0.06 µg/ml). Heat mediated
antigen retrieval was performed using [ab93678](#) (citrate buffer, pH
6.0). Tissue was counterstained with Hematoxylin.
ImmunoHistoProbe one step HRP Polymer (ready to use) was used
at 1:0 dilution. PBS instead of the primary antibody was used as the
negative control.



Flow Cytometry analysis of K-562 (Human chronic myelogenous leukemia lymphoblast) cells labelling Iba1 with purified ab178680 at 1/100 dilution (10 µg/ml) (red). Cells were fixed with 4% Paraformaldehyde and permeabilised with 90% Methanol. A Goat anti-rabbit IgG (Alexa Fluor® 488) (**ab150081**) secondary antibody was used at 1/2000. Isotype control - Rabbit monoclonal IgG (black). Unlabelled control - Cell without incubation with primary antibody and secondary antibody (blue).

Why choose a recombinant antibody?

 <p>Research with confidence Consistent and reproducible results</p>	 <p>Long-term and scalable supply Recombinant technology</p>
 <p>Success from the first experiment Confirmed specificity</p>	 <p>Ethical standards compliant Animal-free production</p>

Anti-Iba1 antibody [EPR6136(2)] (ab178680)

Please note: All products are "FOR RESEARCH USE ONLY. NOT FOR USE IN DIAGNOSTIC PROCEDURES"

Our Abpromise to you: Quality guaranteed and expert technical support

- Replacement or refund for products not performing as stated on the datasheet

- Valid for 12 months from date of delivery
- Response to your inquiry within 24 hours
- We provide support in Chinese, English, French, German, Japanese and Spanish
- Extensive multi-media technical resources to help you
- We investigate all quality concerns to ensure our products perform to the highest standards

If the product does not perform as described on this datasheet, we will offer a refund or replacement. For full details of the Abpromise, please visit <https://www.abcam.cn/abpromise> or contact our technical team.

Terms and conditions

- Guarantee only valid for products bought direct from Abcam or one of our authorized distributors