

Anti-Iba1 antibody ab108539

★★★★★ [3 Abreviews](#) [39 References](#) [6 图像](#)

概述

产品名称	Anti-Iba1抗体
描述	兔多克隆抗体to Iba1
宿主	Rabbit
特异性	In WB, we recommend blocking in milk. Blocking with BSA gives high background. If looking for a monoclonal anti-Iba1 alternative we can recommend our RabMAb ab178846
经测试应用	适用于: WB, IHC-P
种属反应性	与反应: Mouse, Rat, Human
免疫原	Synthetic peptide corresponding to Human Iba1 (C terminal). Database link: P55008
阳性对照	Iba1 (Human) full length recombinant protein; Rat brain lysate; Human fetal lymphocytes; spleen tissue lysate; THP1, C6, NR8383 whole cell lysate
常规说明	<p>The Life Science industry has been in the grips of a reproducibility crisis for a number of years. Abcam is leading the way in addressing this with our range of recombinant monoclonal antibodies and knockout edited cell lines for gold-standard validation. Please check that this product meets your needs before purchasing.</p> <p>If you have any questions, special requirements or concerns, please send us an inquiry and/or contact our Support team ahead of purchase. Recommended alternatives for this product can be found below, along with publications, customer reviews and Q&As</p>

性能

形式	Lyophilized:Reconstitute with 200ul distilled sterile water. Please note that if you receive this product in liquid form it has already been reconstituted as described and no further reconstitution is necessary.
存放说明	Shipped at 4°C. Upon delivery aliquot and store at -20°C. Avoid repeated freeze / thaw cycles.
存储溶液	pH: 7.20 Preservative: 0.02% Sodium azide Constituents: PBS, 1% BSA
纯度	Immunogen affinity purified
克隆	多克隆
同种型	IgG

应用

The Abpromise guarantee **Abpromise™** 承诺保证使用 ab108539 于以下的经测试应用

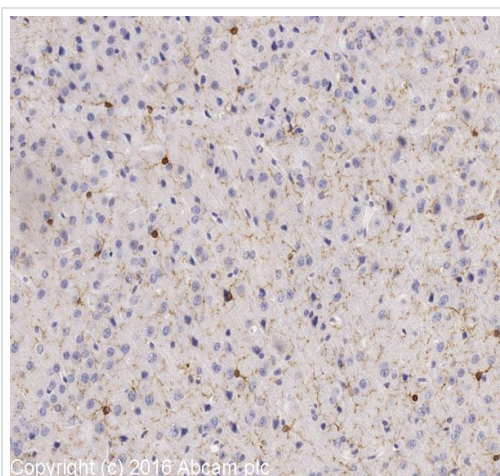
“应用说明”部分 下显示的仅为推荐的起始稀释度;实际最佳的稀释度/浓度应由使用者检定。

应用	Ab评论	说明
WB		1/500 - 1/1000. Predicted molecular weight: 17 kDa. We recommend blocking in 3-5% milk. Blocking with BSA gives high background.
IHC-P	★★★★★ (3)	1/100 - 1/500.

靶标

功能	Actin-binding protein that enhances membrane ruffling and RAC activation. Enhances the actin-bundling activity of LCP1. Binds calcium. Plays a role in RAC signaling and in phagocytosis. May play a role in macrophage activation and function. Promotes the proliferation of vascular smooth muscle cells and of T-lymphocytes. Enhances lymphocyte migration. Plays a role in vascular inflammation.
组织特异性	Detected in T-lymphocytes and peripheral blood mononuclear cells.
序列相似性	Contains 2 EF-hand domains.
翻译后修饰	Phosphorylated on serine residues.
细胞定位	Cytoplasm > cytoskeleton. Cell projection > ruffle membrane. Associated with the actin cytoskeleton at membrane ruffles and at sites of phagocytosis.

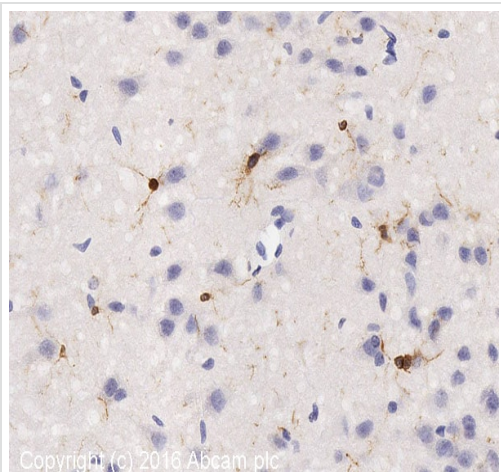
图片



Immunohistochemistry (Formalin/PFA-fixed paraffin-embedded sections) - Anti-Iba1 antibody (ab108539)

IHC image of Iba1 staining in normal mouse brain formalin fixed paraffin embedded tissue section, performed on a Leica Bond™ system using the standard protocol B. The section was pre-treated using heat mediated antigen retrieval with sodium citrate buffer (pH6, epitope retrieval solution 1) for 20 mins. The section was then incubated with ab108539, 1/1000 dilution, for 15 mins at room temperature and detected using an HRP conjugated ABC system. DAB was used as the chromogen. The section was then counterstained with haematoxylin and mounted with DPX.

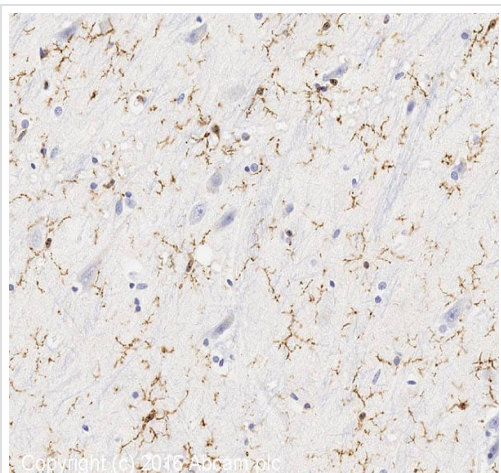
For other IHC staining systems (automated and non-automated) customers should optimize variable parameters such as antigen retrieval conditions, primary antibody concentration and antibody incubation times.



Immunohistochemistry (Formalin/PFA-fixed paraffin-embedded sections) - Anti-Iba1 antibody (ab108539)

IHC image of Iba1 staining in normal rat brain formalin fixed paraffin embedded tissue section, performed on a Leica Bond™ system using the standard protocol F. The section was pre-treated using heat mediated antigen retrieval with sodium citrate buffer (pH6, epitope retrieval solution 1) for 20 mins. The section was then incubated with ab108539, 1/500 dilution, for 15 mins at room temperature and detected using an HRP conjugated compact polymer system. DAB was used as the chromogen. The section was then counterstained with haematoxylin and mounted with DPX.

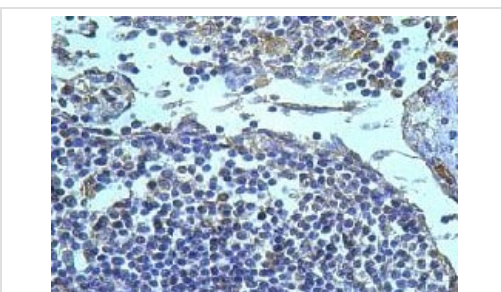
For other IHC staining systems (automated and non-automated) customers should optimize variable parameters such as antigen retrieval conditions, primary antibody concentration and antibody incubation times.



Immunohistochemistry (Formalin/PFA-fixed paraffin-embedded sections) - Anti-Iba1 antibody (ab108539)

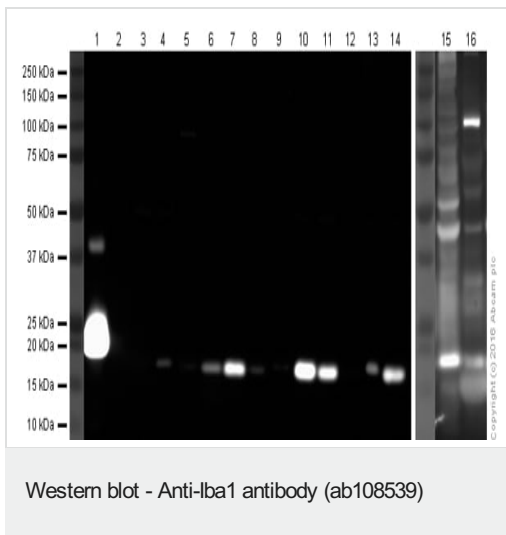
IHC image of Iba1 staining in normal human hippocampus formalin fixed paraffin embedded tissue section, performed on a Leica Bond™ system using the standard protocol F. The section was pre-treated using heat mediated antigen retrieval with sodium citrate buffer (pH6, epitope retrieval solution 1) for 20 mins. The section was then incubated with ab108539, 1/1000 dilution, for 15 mins at room temperature and detected using an HRP conjugated compact polymer system. DAB was used as the chromogen. The section was then counterstained with haematoxylin and mounted with DPX.

For other IHC staining systems (automated and non-automated) customers should optimize variable parameters such as antigen retrieval conditions, primary antibody concentration and antibody incubation times.



Immunohistochemistry (Formalin/PFA-fixed paraffin-embedded sections) - Anti-Iba1 antibody (ab108539)

ab108539, at 1/100 dilution, staining Iba1 in formalin-fixed, paraffin-embedded Human fetal lymphocytes by Immunohistochemistry.



All lanes : Anti-Iba1 antibody (ab108539) at 1/1000 dilution

Lane 1 : Human Iba1 recombinant protein at 0.1 µg

Lane 2 : HEK293 whole cell lysate at 20 µg

Lane 3 : A431 whole cell lysate at 20 µg

Lane 4 : NIH3T3 whole cell lysate at 30 µg

Lane 5 : Human spleen tissue lysate at 20 µg

Lane 6 : Mouse spleen tissue lysate at 30 µg

Lane 7 : Rat spleen tissue lysate at 30 µg

Lane 8 : U937 whole cell lysate at 30 µg

Lane 9 : MOLT4 whole cell lysate at 20 µg

Lane 10 : THP1 whole cell lysate at 30 µg

Lane 11 : THP1 whole cell lysate, PMA treated at 30 µg

Lane 12 : Raw 264.7 whole cell lysate at 30 µg

Lane 13 : C6 whole cell lysate at 30 µg

Lane 14 : NR8383 whole cell lysate at 30 µg

Lane 15 : NIH3T3 whole cell lysate - BLOCKED IN 5% BSA at 30 µg

Lane 16 : Human spleen tissue lysate - BLOCKED IN 5% BSA at 20 µg

Developed using the ECL technique.

Performed under reducing conditions.

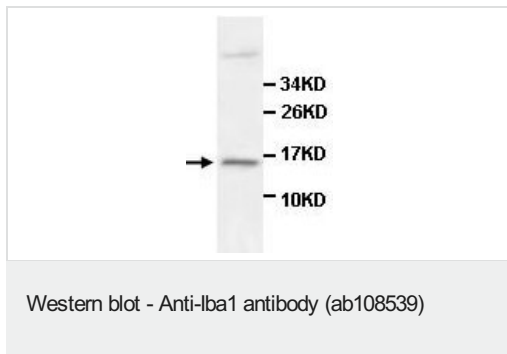
Predicted band size: 17 kDa

Exposure time: 3 minutes

Lanes 1-14: Blocked in 3% milk for 1 hour (RT). Lanes 15-16: Blocked in 5% BSA for 1 hour (RT).

Abcam recommends blocking in milk for cleaner blots with reduced background, in comparison to BSA.

This blot was produced using a 4-12% Bis-Tris gel under the MOPS buffer system. The gel was run at 200V for 60 minutes before being transferred onto a nitrocellulose membrane at 30V for 70 minutes. The membrane was then blocked for an hour before being incubated with ab108539 (anti-Iba1 antibody; 1/1000) for 18 hours at 4°C. Antibody binding was detected using HRP-labelled anti-Rabbit IgG for 1 hour at room temperature and visualised using ECL development solution [ab133406](#).



Anti-Iba1 antibody (ab108539) at 1/500 dilution + Rat brain lysate

Predicted band size: 17 kDa

Please note: All products are "FOR RESEARCH USE ONLY. NOT FOR USE IN DIAGNOSTIC PROCEDURES"

Our Abpromise to you: Quality guaranteed and expert technical support

- Replacement or refund for products not performing as stated on the datasheet
- Valid for 12 months from date of delivery
- Response to your inquiry within 24 hours
- We provide support in Chinese, English, French, German, Japanese and Spanish
- Extensive multi-media technical resources to help you
- We investigate all quality concerns to ensure our products perform to the highest standards

If the product does not perform as described on this datasheet, we will offer a refund or replacement. For full details of the Abpromise, please visit <https://www.abcam.cn/abpromise> or contact our technical team.

Terms and conditions

- Guarantee only valid for products bought direct from Abcam or one of our authorized distributors