


Anti-HYAL2 antibody ab68608

★★★★★ [2 Abreviews](#) [11 References](#) [2 图像](#)

概述

产品名称	Anti-HYAL2抗体
描述	兔多克隆抗体to HYAL2
宿主	Rabbit
经测试应用	适用于: IHC-P, IHC-Fr, WB, ICC/IF
种属反应性	与反应: Mouse, Rat, Human 预测可用于: Dog, Pig, Chimpanzee 
免疫原	Synthetic peptide corresponding to Human HYAL2 aa 1-100 conjugated to keyhole limpet haemocyanin. (Peptide available as ab68607)
常规说明	<p>The Life Science industry has been in the grips of a reproducibility crisis for a number of years. Abcam is leading the way in addressing this with our range of recombinant monoclonal antibodies and knockout edited cell lines for gold-standard validation. Please check that this product meets your needs before purchasing.</p> <p>If you have any questions, special requirements or concerns, please send us an inquiry and/or contact our Support team ahead of purchase. Recommended alternatives for this product can be found below, along with publications, customer reviews and Q&As</p>

性能

形式	Liquid
存放说明	Shipped at 4°C. Store at +4°C short term (1-2 weeks). Upon delivery aliquot. Store at -20°C or -80°C. Avoid freeze / thaw cycle.
存储溶液	<p>pH: 7.40</p> <p>Preservative: 0.02% Sodium azide</p> <p>Constituent: PBS</p> <p>Batches of this product that have a concentration < 1mg/ml may have BSA added as a stabilising agent. If you would like information about the formulation of a specific lot, please contact our scientific support team who will be happy to help.</p>
纯度	Immunogen affinity purified
克隆	多克隆

同种型IgG

应用

The Abpromise guarantee **Abpromise™**承诺保证使用ab68608于以下的经测试应用

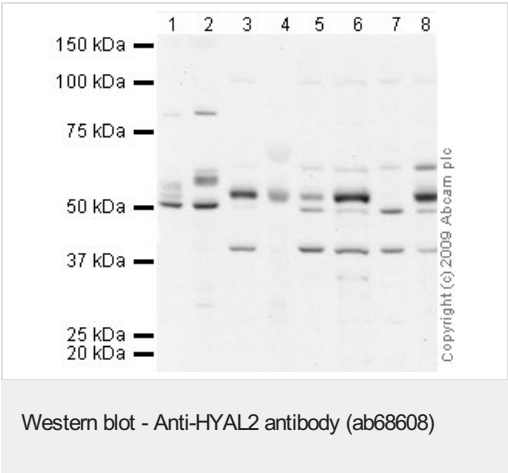
“应用说明”部分 下显示的仅为推荐的起始稀释度;实际最佳的稀释度/浓度应由使用者检定。

应用	Ab评论	说明
IHC-P		Use at an assay dependent concentration. PubMed: 23560496
IHC-Fr		Use at an assay dependent concentration. PubMed: 23365098
WB	★★★★★ (1)	Use a concentration of 1 µg/ml. Detects a band of approximately 50 kDa (predicted molecular weight: 54 kDa).
ICC/IF		Use a concentration of 5 µg/ml.

靶标

功能	Hydrolyzes high molecular weight hyaluronic acid to produce an intermediate-sized product which is further hydrolyzed by sperm hyaluronidase to give small oligosaccharides. Displays very low levels of activity. Associates with and negatively regulates MST1R.
组织特异性	Widely expressed. No expression detected in adult brain.
序列相似性	Belongs to the glycosyl hydrolase 56 family. Contains 1 EGF-like domain.
细胞定位	Cell membrane.

图片



- All lanes :** Anti-HYAL2 antibody (ab68608) at 1 µg/ml
- Lane 1 :** Liver (Rat) Tissue Lysate
- Lane 2 :** Liver (Mouse) Tissue Lysate
- Lane 3 :** JEG-3 (Human placental choriocarcinoma cell line) Whole Cell Lysate
- Lane 4 :** Human thymus tissue lysate - total protein (**ab30146**)
- Lane 5 :** HeLa (Human epithelial carcinoma cell line) Whole Cell Lysate
- Lane 6 :** HepG2 (Human hepatocellular liver carcinoma cell line) Whole Cell Lysate
- Lane 7 :** Raji whole cell lysate (**ab30124**)
- Lane 8 :** SW480 whole cell lysate (**ab3957**)

Lysates/proteins at 10 µg per lane.

Secondary

All lanes : Goat polyclonal to Rabbit IgG - H&L - Pre-Adsorbed (HRP) at 1/3000 dilution

Developed using the ECL technique.

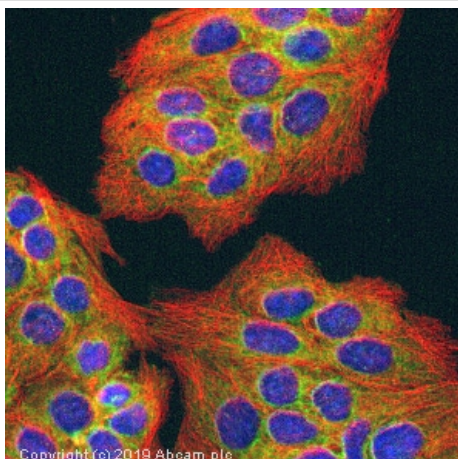
Performed under reducing conditions.

Predicted band size: 54 kDa

Observed band size: 50 kDa

Additional bands at: 40 kDa, 54 kDa (possible isoform), 58 kDa.

We are unsure as to the identity of these extra bands.



Immunocytochemistry/ Immunofluorescence - Anti-HYAL2 antibody (ab68608)

ab68608 staining HYAL2 in JEG3 cells. The cells were fixed with 100% methanol (5 min) and then incubated in 1%BSA / 10% normal goat serum / 0.3M glycine in 0.1% PBS-Tween for 1h to permeabilise the cells and block non-specific protein-protein interactions. The cells were then incubated with the antibody ab68608 at 1µg/ml and **ab7291** (Mouse monoclonal to alpha Tubulin - Loading Control) used at a 1/1000 dilution overnight at +4°C. The secondary antibodies were **ab150081**, Goat Anti-Rabbit IgG H&L (Alexa Fluor® 488) preadsorbed, (pseudo-colored green) and **ab150120**, Goat polyclonal Secondary Antibody to Mouse IgG - H&L (Alexa Fluor® 594) preadsorbed, (colored red), both used at a 1/1000 dilution for 1 hour at room temperature. DAPI was used to stain the cell nuclei (colored blue) at a concentration of 1.43 µM for 1hour at room temperature.

Please note: All products are "FOR RESEARCH USE ONLY. NOT FOR USE IN DIAGNOSTIC PROCEDURES"

Our Abpromise to you: Quality guaranteed and expert technical support

- Replacement or refund for products not performing as stated on the datasheet
- Valid for 12 months from date of delivery
- Response to your inquiry within 24 hours
- We provide support in Chinese, English, French, German, Japanese and Spanish
- Extensive multi-media technical resources to help you
- We investigate all quality concerns to ensure our products perform to the highest standards

If the product does not perform as described on this datasheet, we will offer a refund or replacement. For full details of the Abpromise, please visit <https://www.abcam.cn/abpromise> or contact our technical team.

Terms and conditions

- Guarantee only valid for products bought direct from Abcam or one of our authorized distributors