


# Anti-HUS1 antibody ab96297

**4 References**   **2 图像**

### 概述

产品名称	Anti-HUS1抗体
描述	兔多克隆抗体to HUS1
宿主	Rabbit
经测试应用	适用于: WB, IHC-P
种属反应性	与反应: Human 预测可用于: Rat, Cow, Pig 
免疫原	Recombinant protein fragment containing a sequence corresponding to a region within amino acids 1 - 243 of Human HUS1 (AAH07013).
阳性对照	293T cell lysate, CA922 xenograft
常规说明	<p>The Life Science industry has been in the grips of a reproducibility crisis for a number of years. Abcam is leading the way in addressing this with our range of recombinant monoclonal antibodies and knockout edited cell lines for gold-standard validation. Please check that this product meets your needs before purchasing.</p> <p>If you have any questions, special requirements or concerns, please send us an inquiry and/or contact our Support team ahead of purchase. Recommended alternatives for this product can be found below, along with publications, customer reviews and Q&amp;As</p>

### 性能

形式	Liquid
存放说明	Shipped at 4°C. Upon delivery aliquot and store at -20°C or -80°C. Avoid repeated freeze / thaw cycles.
存储溶液	<p>pH: 7.00</p> <p>Preservative: 0.01% Thimerosal (merthiolate)</p> <p>Constituents: 1.21% Tris, 0.75% Glycine, 20% Glycerol (glycerin, glycerine)</p>
纯度	Immunogen affinity purified
克隆	多克隆
同种型	IgG

### 应用

The Abpromise guarantee

Abpromise™承诺保证使用ab96297于以下的经测试应用

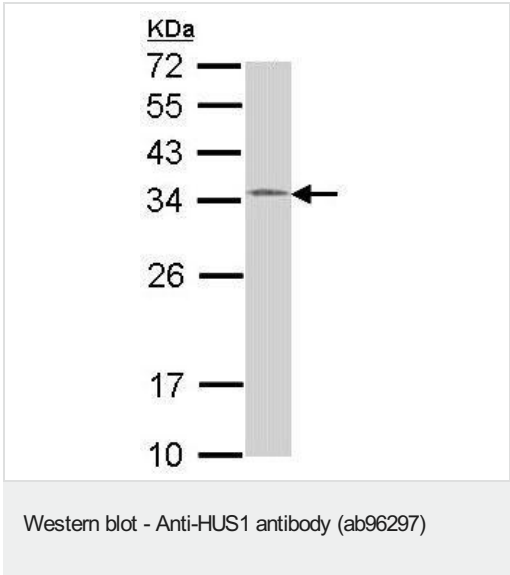
“应用说明”部分 下显示的仅为推荐的起始稀释度;实际最佳的稀释度/浓度应由使用者检定。

应用	Ab评论	说明
WB		1/500 - 1/3000. Predicted molecular weight: 32 kDa.
IHC-P		1/100 - 1/500.

靶标

功能	Component of the 9-1-1 cell-cycle checkpoint response complex that plays a major role in DNA repair. The 9-1-1 complex is recruited to DNA lesion upon damage by the RAD17-replication factor C (RFC) clamp loader complex. Acts then as a sliding clamp platform on DNA for several proteins involved in long-patch base excision repair (LP-BER). The 9-1-1 complex stimulates DNA polymerase beta (POLB) activity by increasing its affinity for the 3'-OH end of the primer-template and stabilizes POLB to those sites where LP-BER proceeds; endonuclease FEN1 cleavage activity on substrates with double, nick, or gap flaps of distinct sequences and lengths; and DNA ligase I (LIG1) on long-patch base excision repair substrates.
组织特异性	Ubiquitous.
序列相似性	Belongs to the HUS1 family.
细胞定位	Nucleus. Cytoplasm. In discrete nuclear foci upon DNA damage. According to PubMed:14500360, localized also in the cytoplasm. DNA damage induces its nuclear translocation. Shuttles between the nucleus and the cytoplasm.

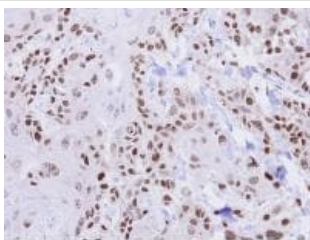
图片



Anti-HUS1 antibody (ab96297) at 1/1000 dilution + 293T whole cell lysate at 30 µg

Predicted band size: 32 kDa

12% SDS PAGE



ab96297 at 1/500 dilution, staining HUS1 in paraffin-embedded CA922 xenograft.

Immunohistochemistry (Formalin/PFA-fixed paraffin-embedded sections) - Anti-HUS1 antibody (ab96297)

**Please note:** All products are "FOR RESEARCH USE ONLY. NOT FOR USE IN DIAGNOSTIC PROCEDURES"

### Our Abpromise to you: Quality guaranteed and expert technical support

---

- Replacement or refund for products not performing as stated on the datasheet
- Valid for 12 months from date of delivery
- Response to your inquiry within 24 hours
- We provide support in Chinese, English, French, German, Japanese and Spanish
- Extensive multi-media technical resources to help you
- We investigate all quality concerns to ensure our products perform to the highest standards

If the product does not perform as described on this datasheet, we will offer a refund or replacement. For full details of the Abpromise, please visit <https://www.abcam.cn/abpromise> or contact our technical team.

### Terms and conditions

---

- Guarantee only valid for products bought direct from Abcam or one of our authorized distributors