

### Anti-Human Nuclear Antigen antibody [235-1] ab191181

★★★★★ [3 Abreviews](#) [43 References](#) [9 图像](#)

#### 概述

产品名称	抗人核Antigen抗体[235-1]
描述	小鼠单克隆抗体[235-1] to人核Antigen
宿主	Mouse
特异性	ab191181 recognizes an antigen associated with the nuclei in human cells. It can be used to stain the nuclei in cell or tissue preparations and can be used as a nuclear marker in subcellular fractions. It produces a speckled pattern in normal and malignant cells and may be used to stain the nuclei of cells in frozen tissue sections. It can be used with paraformaldehyde-fixed frozen tissue or cell preparations.
经测试应用	适用于: Flow Cyt, ICC/IF, IHC-Fr
种属反应性	与反应: Human, Non human primates 不与反应: Mouse, Rat, Chicken
免疫原	Tissue, cells or virus corresponding to Human Human Nuclear Antigen. Nuclei of Human myeloid leukemia biopsy cells
阳性对照	IHC-Fr: Human tonsil tissue; ICC/IF: MCF and K562 cells; Flow Cyt: Raji, MCF7, K562, HeLa, and Jurkat cells.
常规说明	<b>ab190710</b> is recommended for IHC-P with paraffin embedded sections.  The Life Science industry has been in the grips of a reproducibility crisis for a number of years. Abcam is leading the way in addressing this with our range of recombinant monoclonal antibodies and knockout edited cell lines for gold-standard validation. Please check that this product meets your needs before purchasing.  If you have any questions, special requirements or concerns, please send us an inquiry and/or contact our Support team ahead of purchase. Recommended alternatives for this product can be found below, along with publications, customer reviews and Q&As

#### 性能

形式	Liquid
存放说明	Shipped at 4°C. Store at +4°C short term (1-2 weeks). Upon delivery aliquot. Store at -20°C long term. Avoid freeze / thaw cycle.
存储溶液	pH: 7.2 Preservative: 0.05% Sodium azide

	Constituents: PBS, 0.05% BSA
纯度	Protein A purified
克隆	单克隆
克隆编号	235-1
同种型	IgG1
轻链类型	kappa

## 应用

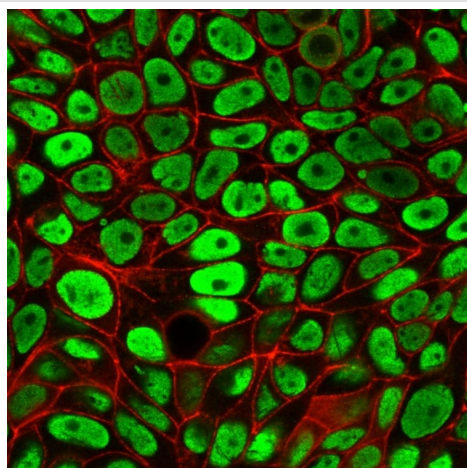
**The Abpromise guarantee**      **Abpromise™** 承诺保证使用 ab191181 于以下的经测试应用

“应用说明”部分 下显示的仅为推荐的起始稀释度;实际最佳的稀释度/浓度应由使用者检定。

应用	Ab 评论	说明
Flow Cyt		Use 1-2µg for 10 <sup>6</sup> cells. <b>ab170190</b> - Mouse monoclonal IgG1, is suitable for use as an isotype control with this antibody.
ICC/IF	★★★★★ (1)	Use a concentration of 1 - 2 µg/ml.
IHC-Fr		Use a concentration of 0.5 - 1 µg/ml.

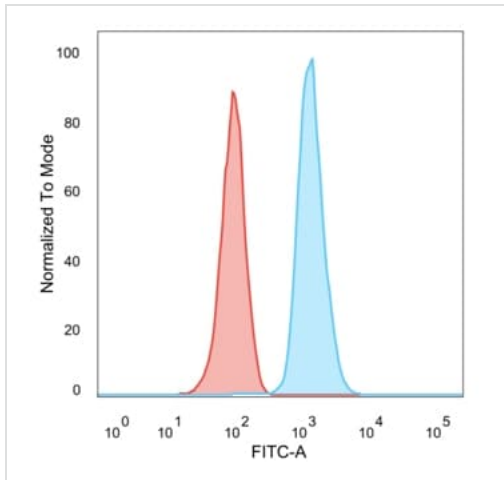
## 靶标

## 图片



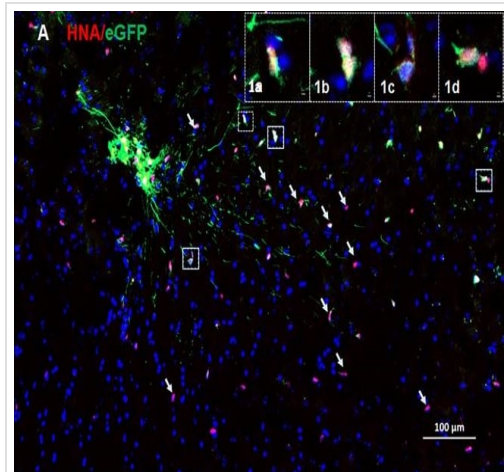
PFA-fixed MCF-7 (human breast adenocarcinoma cell line) cells stained for Human Nuclear Antigen using ab191181 at 2 ug/ml in ICC.

Immunocytochemistry/ Immunofluorescence - Anti-Human Nuclear Antigen antibody [235-1] (ab191181)



Flow Cytometry - Anti-Human Nuclear Antigen antibody [235-1] (ab191181)

Flow Cytometric analysis of paraformaldehyde-fixed Raji (human Burkitt's lymphoma cell line) cells staining Human Nuclear Antigen using ab191181 at 2 ug/million cells, followed by goat anti-Mouse IgG-CF488 (Blue); Isotype control (Red).

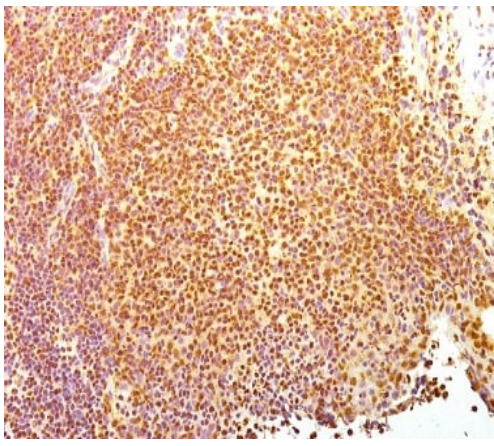


Immunohistochemistry (Frozen sections) - Anti-Human Nuclear Antigen antibody [235-1] (ab191181)

Rockne et al PLoS One. 2018 Aug 2;13(8):e0199967. doi: 10.1371/journal.pone.0199967. eCollection 2018. Fig 1. Reproduced under the Creative Commons license <http://creativecommons.org/licenses/by/4.0/>

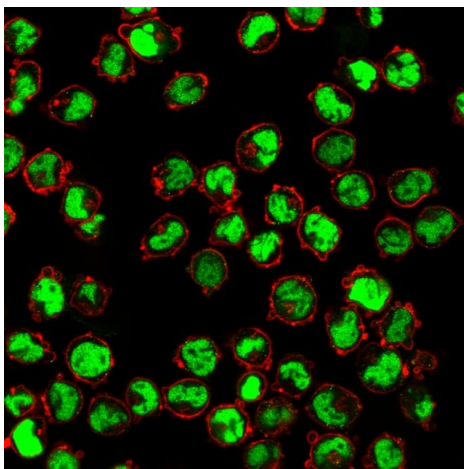
### Characterization of LM-NSC008 cells.

Visualization of LM-NSC008 cells in naïve non-tumor bearing mouse brain 6 and 9 months post administration. **(A)** Immunohistochemistry (IHC) staining of LM-NSC008 cells (stably expressing eGFP/Ffluc) with anti-HNA antibodies (NSC injection site, white arrows indicate the LM-NSC008 cells, scale bar 100 μm). **(1a-1d)** Insets show LM-NSC008 cells co-expressing HNA and eGFP proteins (inset scale bars [1a-1f] 2 μm).



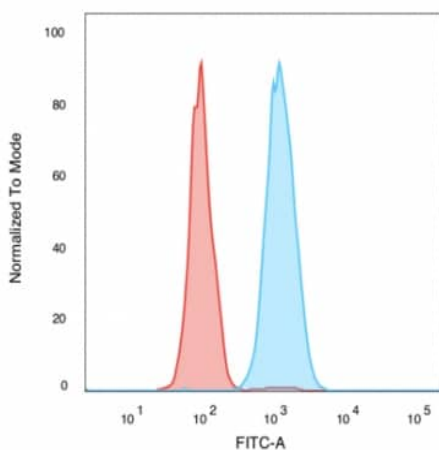
Immunohistochemistry (Frozen sections) - Anti-Human Nuclear Antigen antibody [235-1] (ab191181)

Cold acetone-fixed frozen human tonsil tissue stained for Human Nuclear Antigen with ab191181 at 0.5  $\mu\text{g}/\text{ml}$  (30 mins, RT) in immunohistochemical analysis. Visualised using a HRP-Polymer detection system.



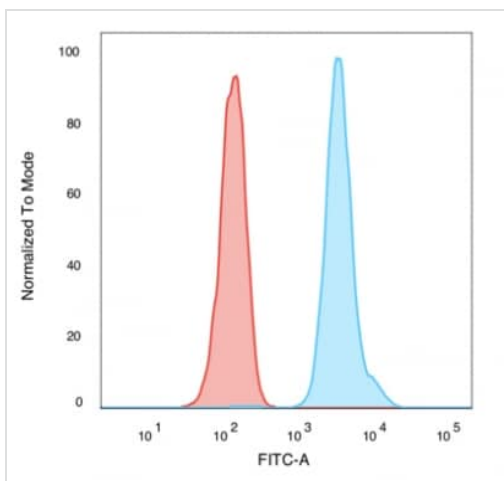
Immunocytochemistry/ Immunofluorescence - Anti-Human Nuclear Antigen antibody [235-1] (ab191181)

PFA-fixed K562 (human chronic myelogenous leukemia cell line from bone marrow ) cells stained for Human Nuclear Antigen using ab191181 at 2  $\mu\text{g}/\text{ml}$  in ICC.



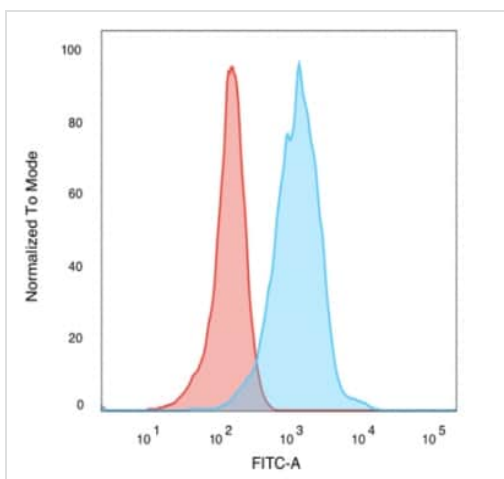
Flow Cytometry - Anti-Human Nuclear Antigen antibody [235-1] (ab191181)

Flow Cytometric analysis of paraformaldehyde-fixed MCF-7 (human breast adenocarcinoma cell line) cells staining Human Nuclear Antigen using ab191181 at 2  $\mu\text{g}/\text{million}$  cells, followed by goat anti-Mouse IgG-CF488 (Blue); Isotype control (Red).



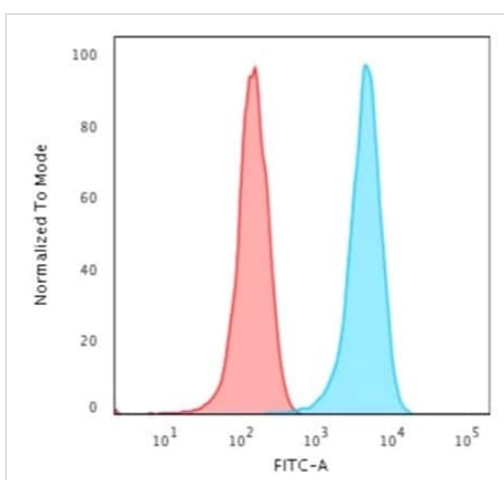
Flow Cytometry - Anti-Human Nuclear Antigen antibody [235-1] (ab191181)

Flow Cytometric analysis of paraformaldehyde-fixed K562 (human chronic myelogenous leukemia cell line from bone marrow ) cells staining Human Nuclear Antigen using ab191181 at 2 ug/million cells, followed by goat anti-Mouse IgG-CF488 (Blue); Isotype control (Red).



Flow Cytometry - Anti-Human Nuclear Antigen antibody [235-1] (ab191181)

Flow Cytometric analysis of paraformaldehyde-fixed Jurkat (human T cell leukemia cell line from peripheral blood) cells staining Human Nuclear Antigen using ab191181 at 2 ug/million cells, followed by goat anti-Mouse IgG-CF488 (Blue); Isotype control (Red).



Flow Cytometry - Anti-Human Nuclear Antigen antibody [235-1] (ab191181)

Flow Cytometric analysis of paraformaldehyde-fixed HeLa (human lymphoblastic leukemia cell line) cells staining Human Nuclear Antigen using ab191181 at 2 ug/million cells, followed by goat anti-Mouse IgG-CF488 (Blue); Isotype control (Red).

**Please note:** All products are "FOR RESEARCH USE ONLY. NOT FOR USE IN DIAGNOSTIC PROCEDURES"

### **Our Abpromise to you: Quality guaranteed and expert technical support**

---

- Replacement or refund for products not performing as stated on the datasheet
- Valid for 12 months from date of delivery
- Response to your inquiry within 24 hours
- We provide support in Chinese, English, French, German, Japanese and Spanish
- Extensive multi-media technical resources to help you
- We investigate all quality concerns to ensure our products perform to the highest standards

If the product does not perform as described on this datasheet, we will offer a refund or replacement. For full details of the Abpromise, please visit <https://www.abcam.cn/abpromise> or contact our technical team.

### **Terms and conditions**

---

- Guarantee only valid for products bought direct from Abcam or one of our authorized distributors