

# Anti-Human IgM antibody [EPR5539-65-4] ab134159

重组 RabMAb

[7 References](#) [5 图像](#)

### 概述

产品名称	抗人IgM抗体[EPR5539-65-4]
描述	兔单克隆抗体[EPR5539-65-4] to人IgM
宿主	Rabbit
特异性	This antibody only recognizes the mu chain of IgM.
经测试应用	<b>适用于:</b> WB, IP, IHC-P <b>不适用于:</b> ICC/IF
种属反应性	<b>与反应:</b> Human
免疫原	Full length native protein (purified). This information is proprietary to Abcam and/or its suppliers.
阳性对照	IHC: Human tonsil tissue. WB: Raji cells; IP: Raji cells.
常规说明	<p>This product is a recombinant monoclonal antibody, which offers several advantages including:</p> <ul style="list-style-type: none"><li>- High batch-to-batch consistency and reproducibility</li><li>- Improved sensitivity and specificity</li><li>- Long-term security of supply</li><li>- Animal-free production</li></ul> <p>For more information <a href="#">see here</a>.</p> <p>Our RabMAb<sup>®</sup> technology is a patented hybridoma-based technology for making rabbit monoclonal antibodies. For details on our patents, please refer to <a href="#">RabMAb<sup>®</sup> patents</a>.</p> <p>Mouse, Rat: We have preliminary internal testing data to indicate this antibody may not react with these species. Please contact us for more information.</p>

### 性能

形式	Liquid
存放说明	Shipped at 4°C. Store at -20°C. Stable for 12 months at -20°C.
存储溶液	pH: 7.20 Preservative: 0.05% Sodium azide Constituents: 0.05% BSA, 40% Glycerol (glycerin, glycerine), 59% PBS
纯度	Protein A purified
克隆	单克隆

克隆编号                          EPR5539-65-4

同种型                              IgG

## 应用

**The Abpromise guarantee**           **Abpromise™**承诺保证使用ab134159于以下的经测试应用

“应用说明”部分 下显示的仅为推荐的起始稀释度;实际最佳的稀释度/浓度应由使用者检定。

应用	Ab评论	说明
WB		1/1000 - 1/10000. Detects a band of approximately 75 kDa.
IP		1/10 - 1/100.
IHC-P		1/1000. Perform heat mediated antigen retrieval with citrate buffer pH 6 before commencing with IHC staining protocol.

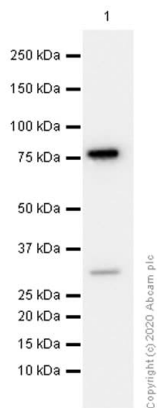
应用说明                              Is unsuitable for ICC/IF.

## 靶标

**相关性**                              IgM normally constitutes about 10% of serum immunoglobulins. IgM antibody is prominent in early immune responses to most antigens and is largely confined to plasma due to it's large size. Monomeric IgM is expressed as a membrane bound antibody on the surface of B cells and as a pentamer when secreted by plasma cells. Due to it's high valency IgM is more efficient than other isotypes in binding antigens with repeating epitopes (virus particles and red blood cells) and is more efficient than IgG in activating the complement pathway. The gene for the mu constant region contains four domains separated by short intervening sequences. IgM measurement yields information about the body's immediate resistance and response to infection as well as information related to specific diseases. Decreased levels are associated with immune deficiency states, hereditary deficiencies, and myeloma. Increased levels can be associated with Waldenstrom's macroglobulinemia, chronic infection and hepatocellular disease.

**细胞定位**                            Cell Membrane and Secreted

## 图片



Western blot - Anti-Human IgM antibody [EPR5539-65-4] (ab134159)

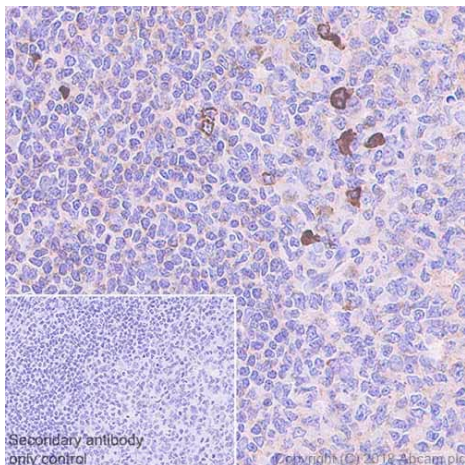
Anti-Human IgM antibody [EPR5539-65-4] (ab134159) at 1/1000 dilution (Purified) + Raji (Human Burkitt's lymphoma B lymphocyte) whole cell lysate at 15  $\mu$ g

### Secondary

Goat Anti-Rabbit IgG H&L (HRP) ([ab97051](#)) at 1/20000 dilution

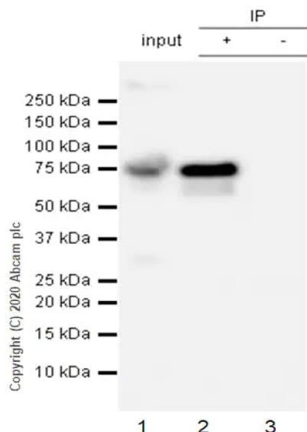
**Observed band size:** 75 kDa

Blocking Buffer and concentration: 5% NFDM/TBST



Immunohistochemistry (Formalin/PFA-fixed paraffin-embedded sections) - Anti-Human IgM antibody [EPR5539-65-4] (ab134159)

Immunohistochemistry (Formalin/PFA-fixed paraffin-embedded sections) analysis of human tonsil tissue sections labeling Human IgM with Purified ab134159 at 1:1000 dilution (0.16  $\mu$ g/ml). Perform heat mediated antigen retrieval using [ab93684](#) (Tris/EDTA buffer, pH 9.0). ImmunoHistoProbe one step HRP Polymer (ready to use) was used as the secondary antibody. Negative control: PBS instead of the primary antibody. Hematoxylin was used as a counterstain.



Immunoprecipitation - Anti-Human IgM antibody  
[EPR5539-65-4] (ab134159)

purified ab134159 at 1/50 dilution (2µg) immunoprecipitating Human IgM in Raji whole cell lysate.

Lane 1 (input): Raji (Human Burkitt's lymphoma B lymphocyte) whole cell lysate 10µg

Lane 2 (+): ab134159 + Raji whole cell lysate.

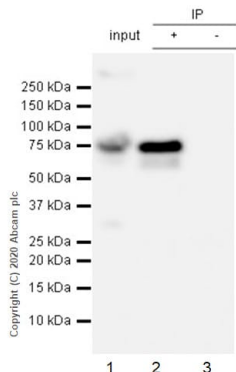
Lane 3 (-): Rabbit monoclonal IgG (**ab172730**) instead of ab134159 in Raji whole cell lysate.

VeriBlot for IP Detection Reagent (HRP) (**ab131366**) (1/1000 dilution) was used for Western blotting.

Blocking Buffer and concentration: 5% NFDm/TBST.

Diluting buffer and concentration: 5% NFDm/TBST.

Observed band size: 75 kDa



Immunoprecipitation - Anti-Human IgM antibody  
[EPR5539-65-4] (ab134159)

Purified ab134159 at 1/20 dilution (1µg) immunoprecipitating Human IgM in Raji whole cell lysate.

Lane 1 (input): Raji (Human Burkitt's lymphoma B lymphocyte) whole cell lysate 10µg

Lane 2 (+): ab134159 + Raji whole cell lysate.

Lane 3 (-): Rabbit monoclonal IgG (**ab172730**) instead of ab134159 in Raji whole cell lysate.

VeriBlot for IP Detection Reagent (HRP) (**ab131366**) (1/1000 dilution) was used for Western blotting.

Blocking Buffer and concentration: 5% NFDm/TBST.

Diluting buffer and concentration: 5% NFDm/TBST.

Observed band size: 75 kDa

### Why choose a recombinant antibody?



**Research with confidence**  
Consistent and reproducible results



**Long-term and scalable supply**  
Recombinant technology



**Success from the first experiment**  
Confirmed specificity



**Ethical standards compliant**  
Animal-free production

Anti-Human IgM antibody [EPR5539-65-4]  
(ab134159)

**Please note:** All products are "FOR RESEARCH USE ONLY. NOT FOR USE IN DIAGNOSTIC PROCEDURES"

### Our Abpromise to you: Quality guaranteed and expert technical support

---

- Replacement or refund for products not performing as stated on the datasheet
- Valid for 12 months from date of delivery
- Response to your inquiry within 24 hours
- We provide support in Chinese, English, French, German, Japanese and Spanish
- Extensive multi-media technical resources to help you
- We investigate all quality concerns to ensure our products perform to the highest standards

If the product does not perform as described on this datasheet, we will offer a refund or replacement. For full details of the Abpromise, please visit <https://www.abcam.cn/abpromise> or contact our technical team.

### Terms and conditions

---

- Guarantee only valid for products bought direct from Abcam or one of our authorized distributors