

### Anti-Human IgG antibody [EPR4421] ab109489

**重组** RabMAb

★★★★★ **3 Abreviews** **301 References** **8 图像**

#### 概述

产品名称	抗人IgG抗体[EPR4421]
描述	兔单克隆抗体[EPR4421] 到人IgG
宿主	Rabbit
特异性	This antibody recognizes all four Human IgG isotypes (IgG1, IgG2, IgG3, and IgG4).
经测试应用	<b>适用于:</b> WB, IHC-P
种属反应性	<b>与反应:</b> Human
免疫原	Synthetic peptide. This information is proprietary to Abcam and/or its suppliers.
阳性对照	WB: Human IgG2, IgG1, IgG3, and IgG4 recombinant proteins, human fetal thymus, fetal tonsil and fetal spleen tissue lysates. IHC-P: Human tonsil and stomach tissues.
常规说明	<p>This product is a recombinant monoclonal antibody, which offers several advantages including:</p> <ul style="list-style-type: none"> <li>- High batch-to-batch consistency and reproducibility</li> <li>- Improved sensitivity and specificity</li> <li>- Long-term security of supply</li> <li>- Animal-free production</li> </ul> <p>For more information <a href="#">see here</a>.</p> <p>Our RabMAb<sup>®</sup> technology is a patented hybridoma-based technology for making rabbit monoclonal antibodies. For details on our patents, please refer to <a href="#">RabMAb<sup>®</sup> patents</a>.</p> <p>Mouse, Rat: We have preliminary internal testing data to indicate this antibody may not react with these species. Please contact us for more information.</p>

#### 性能

形式	Liquid
存放说明	Shipped at 4°C. Store at +4°C short term (1-2 weeks). Upon delivery aliquot. Store at -20°C. Stable for 12 months at -20°C.
存储溶液	<p>pH: 7.20</p> <p>Preservative: 0.01% Sodium azide</p> <p>Constituents: 40% Glycerol, 59% PBS, 0.05% BSA</p>
纯度	Protein A purified

克隆	单克隆
克隆编号	EPR4421
同种型	IgG

应用

The Abpromise guarantee

Abpromise™承诺保证使用ab109489于以下的经测试应用

“应用说明”部分 下显示的仅为推荐的起始稀释度;实际最佳的稀释度/浓度应由使用者检定。

应用	Ab评论	说明
WB		1/1000 - 1/10000. Detects a band of approximately 52-58 kDa.
IHC-P	★★★★★ (1)	1/300 - 1/1000. Perform heat mediated antigen retrieval before commencing with IHC staining protocol. See <a href="#">IHC antigen retrieval protocols</a> .

靶标

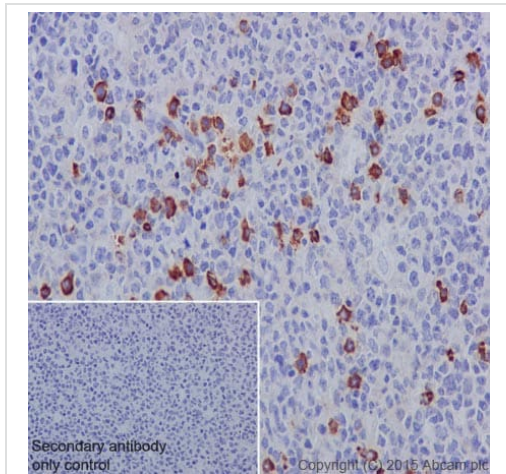
相关性

IgG is a monomeric immunoglobulin, built of two heavy chains gamma and two light chains. Each molecule has two antigen binding sites. This is the most abundant immunoglobulin and is approximately equally distributed in blood and in tissue liquids, constituting 75% of serum immunoglobulins in humans. This is the only isotype that can pass through the human placenta, thereby providing protection to the fetus in its first weeks of life before its own immune system has developed. It can bind to many kinds of pathogens, for example viruses, bacteria, and fungi, and protects the body against them by complement activation (classic pathway), opsonization for phagocytosis and neutralisation of their toxins. There are 4 subclasses: IgG1 (66%), IgG2 (23%), IgG3 (7%) and IgG4 (4%).

细胞定位

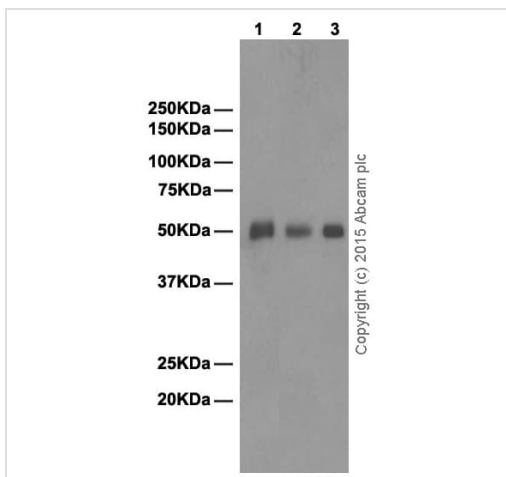
Cell Membrane and Secreted

图片



Immunohistochemistry (Formalin/PFA-fixed paraffin-embedded sections) - Anti-Human IgG antibody [EPR4421] (ab109489)

Immunohistochemistry (Formalin/PFA-fixed paraffin-embedded sections) analysis of human tonsil tissue labeling Human IgG with purified ab109489 at 1/300. Heat mediated antigen retrieval was performed using Tris/EDTA buffer pH 9. **ab97051**, a HRP-conjugated goat anti-rabbit IgG (H+L) was used as the secondary antibody (1/500). Negative control using PBS instead of primary antibody. Counterstained with hematoxylin.



Western blot - Anti-Human IgG antibody [EPR4421] (ab109489)

**All lanes** : Anti-Human IgG antibody [EPR4421] (ab109489) at 1/20000 dilution (purified)

**Lane 1** : Human fetal thymus tissue lysate

**Lane 2** : Human fetal tonsil tissue lysate

**Lane 3** : Human fetal spleen tissue lysate

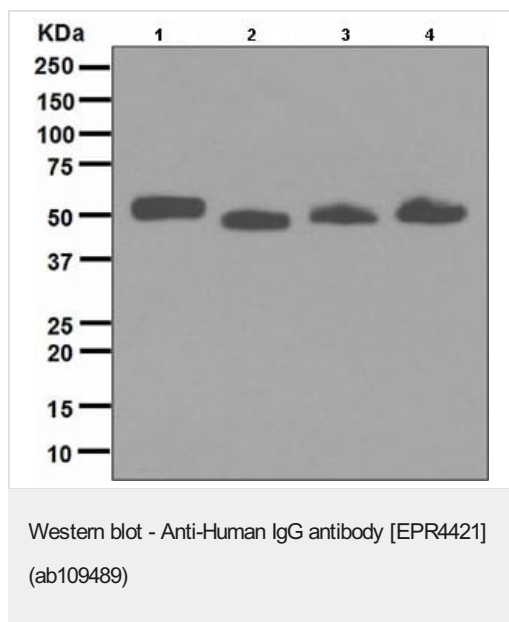
Lysates/proteins at 20 µg per lane.

#### Secondary

**All lanes** : Goat Anti-Rabbit IgG H&L (HRP) (**ab97051**) at 1/50000 dilution

**Observed band size:** 50 kDa

Blocking and dilution buffer: 5% NFDM/TBST.



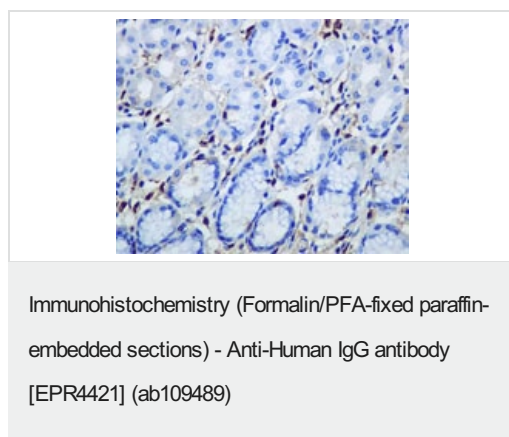
**All lanes :** Anti-Human IgG antibody [EPR4421] (ab109489) at 1/1000 dilution (unpurified)

**Lane 1 :** IgG2 recombinant protein (10 ng protein loaded)

**Lane 2 :** IgG1 recombinant protein (10 ng protein loaded)

**Lane 3 :** IgG3 recombinant protein (10 ng protein loaded)

**Lane 4 :** IgG4 recombinant protein (10 ng protein loaded)



Immunohistochemistry (Formalin/PFA-fixed paraffin-embedded sections) analysis of human stomach tissue labelling IgG with unpurified ab109489 at a dilution of 1/500.

Perform heat mediated antigen retrieval before commencing with IHC staining protocol.

250KDa—  
150KDa—  
100KDa—  
75KDa—  
50KDa—  
37KDa—  
25KDa—  
20KDa—  
15KDa—  
10KDa—

Copyright (c) 2015 Abcam plc

Western blot - Anti-Human IgG antibody [EPR4421]  
(ab109489)

Anti-Human IgG antibody [EPR4421] (ab109489) at 1/1000 dilution  
(purified) + IgG3 recombinant protein at 0.01 µg

### Secondary

Goat Anti-Rabbit IgG H&L (HRP) ([ab97051](#)) at 1/50000 dilution

**Observed band size:** 50 kDa

Blocking and dilution buffer: 5% NFDM/TBST.

1 2 3  
250KDa—  
150KDa—  
100KDa—  
75KDa—  
50KDa—  
37KDa—  
25KDa—  
20KDa—  
15KDa—  
10KDa—

Copyright (c) 2015 Abcam plc

Western blot - Anti-Human IgG antibody [EPR4421]  
(ab109489)

**All lanes :** Anti-Human IgG antibody [EPR4421] (ab109489) at  
1/5000 dilution (purified)

**Lane 1 :** IgG1 recombinant protein

**Lane 2 :** IgG2 recombinant protein

**Lane 3 :** IgG4 recombinant protein

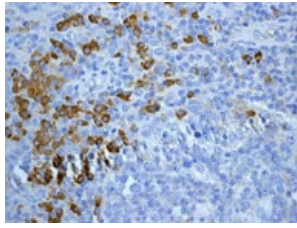
Lysates/proteins at 0.01 µg per lane.

### Secondary

**All lanes :** Goat Anti-Rabbit IgG H&L (HRP) ([ab97051](#)) at 1/50000  
dilution

**Observed band size:** 50 kDa

Blocking and dilution buffer: 5% NFDM/TBST.



Immunohistochemistry (Formalin/PFA-fixed paraffin-embedded sections) - Anti-Human IgG antibody [EPR4421] (ab109489)

Immunohistochemistry (Formalin/PFA-fixed paraffin-embedded sections) analysis of human tonsil tissue labelling IgG with unpurified ab109489 at a dilution of 1/500.

Perform heat mediated antigen retrieval before commencing with IHC staining protocol.

#### Why choose a recombinant antibody?



**Research with confidence**  
Consistent and reproducible results



**Long-term and scalable supply**  
Recombinant technology



**Success from the first experiment**  
Confirmed specificity



**Ethical standards compliant**  
Animal-free production

Anti-Human IgG antibody [EPR4421] (ab109489)

**Please note:** All products are "FOR RESEARCH USE ONLY. NOT FOR USE IN DIAGNOSTIC PROCEDURES"

#### Our Abpromise to you: Quality guaranteed and expert technical support

- Replacement or refund for products not performing as stated on the datasheet
- Valid for 12 months from date of delivery
- Response to your inquiry within 24 hours
- We provide support in Chinese, English, French, German, Japanese and Spanish
- Extensive multi-media technical resources to help you
- We investigate all quality concerns to ensure our products perform to the highest standards

If the product does not perform as described on this datasheet, we will offer a refund or replacement. For full details of the Abpromise, please visit <https://www.abcam.cn/abpromise> or contact our technical team.

#### Terms and conditions

- Guarantee only valid for products bought direct from Abcam or one of our authorized distributors