

Anti-Human IgA antibody [RM128] ab193189

重组

2 References 6 图像

概述

产品名称	抗人IgA抗体[RM128]
描述	兔单克隆抗体[RM128] to人IgA
宿主	Rabbit
特异性	ab193189 reacts with Human IgA, including both IgA1 and IgA2. No cross reactivity with Human IgG, IgM, IgD, or IgE.
经测试应用	适用于: ELISA, IHC-P, Sandwich ELISA
种属反应性	与反应: Human
免疫原	Full length protein corresponding to Human IgA.

性能

形式	Liquid
存放说明	Shipped at 4°C. Store at +4°C short term (1-2 weeks). Upon delivery aliquot. Store at -20°C long term. Avoid freeze / thaw cycle.
存储溶液	Preservative: 0.09% Sodium azide Constituents: 1% BSA, 48% PBS, 50% Glycerol (glycerin, glycerine)
纯度	Protein A purified
纯化说明	Purified from an animal origin-free culture supernatant.
克隆	单克隆
克隆编号	RM128
同种型	IgG

应用

The Abpromise guarantee      Abpromise™承诺保证使用ab193189于以下的经测试应用

“应用说明”部分 下显示的仅为推荐的起始稀释度;实际最佳的稀释度/浓度应由使用者检定。

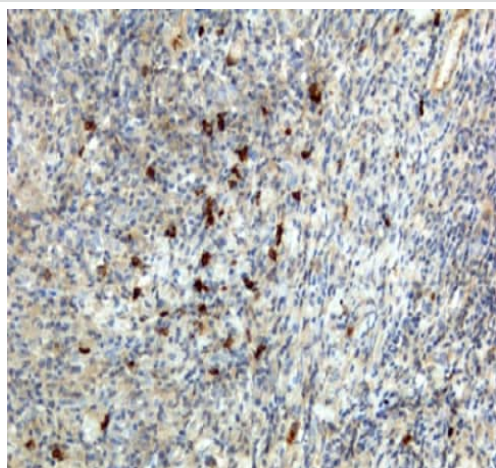
应用	Ab评论	说明
ELISA		Use a concentration of 10 - 200 µg/ml.
IHC-P		Use a concentration of 0.5 - 2 µg/ml.
Sandwich ELISA		Use a concentration of 0.05 - 0.2 µg/ml.

## 靶标

**相关性** Ig alpha is the major immunoglobulin class in body secretions. It may serve both to defend against local infection and to prevent access of foreign antigens to the general immunologic system.

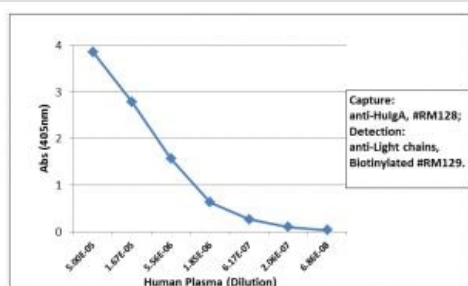
**细胞定位** Secreted

## 图片



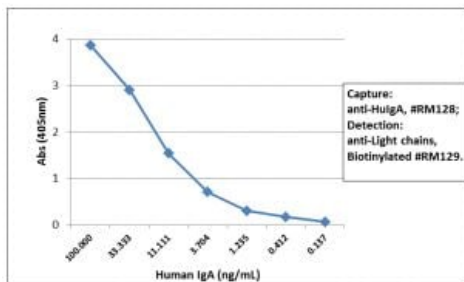
Immunohistochemical analysis of human lymphoid tissue labelling IgA with ab193189 at 0.1 - 1 µg/mL.

Immunohistochemistry (Formalin/PFA-fixed paraffin-embedded sections) - Anti-Human IgA antibody [RM128] (ab193189)

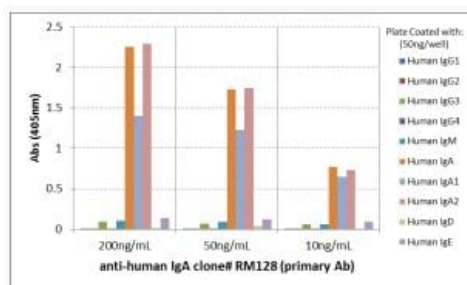


Sandwich ELISA of Human IgA using ab193189 as the capture antibody (100ng/well), and Biotinylated anti-human light chains (κ+λ) antibody as the detection antibody, followed by an alkaline phosphatase conjugated streptavidin.

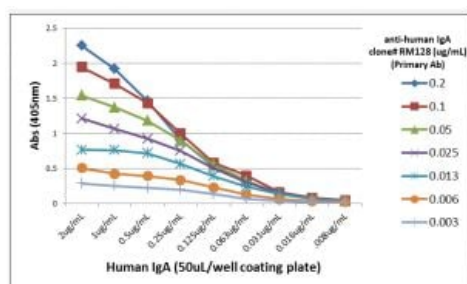
Sandwich ELISA - Anti-Human IgA antibody [RM128] (ab193189)



Sandwich ELISA - Anti-Human IgA antibody  
[RM128] (ab193189)



ELISA - Anti-Human IgA antibody [RM128]  
(ab193189)



ELISA - Anti-Human IgA antibody [RM128]  
(ab193189)

Sandwich ELISA of Human IgA using ab193189 as the capture antibody (100ng/well), and Biotinylated anti-human light chains ( $\kappa$ + $\lambda$ ) antibody as the detection antibody, followed by an alkaline phosphatase conjugated streptavidin.

ELISA analysis of Human immunoglobulins coated at 50 ng/well. ab193189 at 200 ng/mL, 50 ng/mL, or 10 ng/mL was used as the primary antibody and alkaline phosphatase conjugated anti-rabbit IgG as the secondary antibody. the results shows taht ab193189 reacted to both Human IgA1 & IgA2. There was no cross reactivity with Human IgG, IgM, IgD, or IgE.

ELISA analysis of different amounts of Human IgA detected using a serial dilution of ab193189 as the primary antibody. An alkaline phosphatase conjugated anti-rabbit IgG was used as the secondary antibody.

### Why choose a recombinant antibody?



**Research with confidence**  
Consistent and reproducible results



**Long-term and scalable supply**  
Recombinant technology



**Success from the first experiment**  
Confirmed specificity



**Ethical standards compliant**  
Animal-free production

Anti-Human IgA antibody [RM128] (ab193189)

**Please note:** All products are "FOR RESEARCH USE ONLY. NOT FOR USE IN DIAGNOSTIC PROCEDURES"

### Our Abpromise to you: Quality guaranteed and expert technical support

---

- Replacement or refund for products not performing as stated on the datasheet
- Valid for 12 months from date of delivery
- Response to your inquiry within 24 hours
- We provide support in Chinese, English, French, German, Japanese and Spanish
- Extensive multi-media technical resources to help you
- We investigate all quality concerns to ensure our products perform to the highest standards

If the product does not perform as described on this datasheet, we will offer a refund or replacement. For full details of the Abpromise, please visit <https://www.abcam.cn/abpromise> or contact our technical team.

### Terms and conditions

---

- Guarantee only valid for products bought direct from Abcam or one of our authorized distributors