

Anti-HSV1 + HSV2 gB antibody [10B7] ab6506

32 References [2 图像](#)

概述

产品名称	Anti-HSV1 + HSV2 gB抗体[10B7]
描述	小鼠单克隆抗体[10B7] to HSV1 + HSV2 gB
宿主	Mouse
经测试应用	适用于: WB, ELISA, ICC/IF
种属反应性	与反应: Herpes simplex virus, Human herpesvirus 2
免疫原	Tissue, cells or virus corresponding to HSV1 + HSV2 gB.
阳性对照	African Green Monkey Kidney cultured cells(Vero), HSV-1 is strain Machtyre, HSV-2 is strain G.
常规说明	<p>The Life Science industry has been in the grips of a reproducibility crisis for a number of years. Abcam is leading the way in addressing this with our range of recombinant monoclonal antibodies and knockout edited cell lines for gold-standard validation. Please check that this product meets your needs before purchasing.</p> <p>If you have any questions, special requirements or concerns, please send us an inquiry and/or contact our Support team ahead of purchase. Recommended alternatives for this product can be found below, along with publications, customer reviews and Q&As</p>

性能

形式	Liquid
存放说明	Shipped at 4°C. Store at +4°C.
存储溶液	pH: 7.40 Constituent: 100% PBS
纯度	Protein A purified
克隆	单克隆
克隆编号	10B7
骨髓瘤	NS1/1-Ag4-1
同种型	IgG1
轻链类型	kappa

应用

The Abpromise guarantee **Abpromise™**承诺保证使用ab6506于以下的经测试应用

“应用说明”部分 下显示的仅为推荐的起始稀释度;实际最佳的稀释度/浓度应由使用者检定。

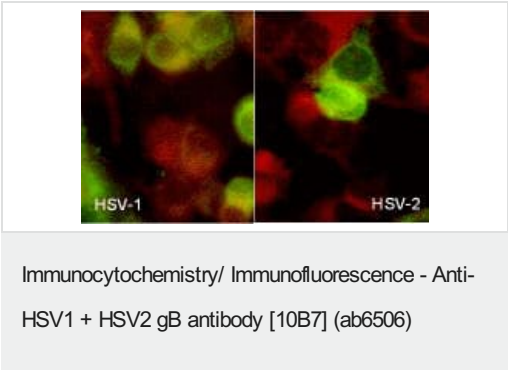
应用	Ab评论	说明
WB		Use at an assay dependent concentration. 1/1600 (HSV2) - 1/12800 (HSV1).
ELISA		1/102400.
ICC/IF		Use at an assay dependent concentration. 1/6400 (HSV1) - 1/25600 (HSV2).

靶标

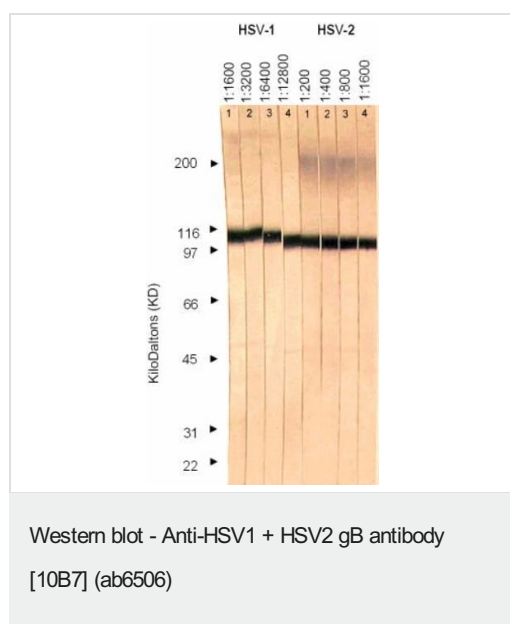
相关性 There are two main types of Herpes Simplex Virus (HSV), 1 and 2. The primary difference between the two types is in where they typically establish latency in the body. HSV1 usually establishes latency in the trigeminal ganglion, a collection of nerve cells near the ear. From there, it tends to recur on the lower lip or face causing cold sores. HSV2 usually resides in the sacral ganglion at the base of the spine. From there, it recurs in the genital area but even this difference is not absolute as in rare cases it can infect any part of the body, including the eyes. Up to 30% of genital herpes are also caused by HSV1. Both HSV1 and 2 are highly contagious through contact.

细胞定位 Virus envelope

图片



Green: immunofluorescence staining of HSV1 or HSV2 of Vero (African green monkey) cells (HSV-1 is strain MacIntyre, HSV-2 is strain G) on slides, using ab6506 (1:100) (secondary anti-mouse-FITC). Red: counterstain in the conjugate preparation.



Lanes 1 & 8 : Anti-HSV1 + HSV2 gB antibody [10B7] (ab6506) at 1/1600 dilution

Lane 2 : Anti-HSV1 + HSV2 gB antibody [10B7] (ab6506) at 1/3200 dilution

Lane 3 : Anti-HSV1 + HSV2 gB antibody [10B7] (ab6506) at 1/6400 dilution

Lane 4 : Anti-HSV1 + HSV2 gB antibody [10B7] (ab6506) at 1/12800 dilution

Lane 5 : Anti-HSV1 + HSV2 gB antibody [10B7] (ab6506) at 1/200 dilution

Lane 6 : Anti-HSV1 + HSV2 gB antibody [10B7] (ab6506) at 1/400 dilution

Lane 7 : Anti-HSV1 + HSV2 gB antibody [10B7] (ab6506) at 1/800 dilution

Lanes 1-4 : Vero cells infected with HSV1

Lanes 5-8 : Vero cells infected with HSV2

Performed under reducing conditions.

Please note: All products are "FOR RESEARCH USE ONLY. NOT FOR USE IN DIAGNOSTIC PROCEDURES"

Our Abpromise to you: Quality guaranteed and expert technical support

- Replacement or refund for products not performing as stated on the datasheet
- Valid for 12 months from date of delivery
- Response to your inquiry within 24 hours
- We provide support in Chinese, English, French, German, Japanese and Spanish
- Extensive multi-media technical resources to help you
- We investigate all quality concerns to ensure our products perform to the highest standards

If the product does not perform as described on this datasheet, we will offer a refund or replacement. For full details of the Abpromise, please visit <https://www.abcam.cn/abpromise> or contact our technical team.

Terms and conditions

- Guarantee only valid for products bought direct from Abcam or one of our authorized distributors