

Anti-Hsp90 alpha antibody [2G5.G3] ab79849

敲除验证

★★★★★ [1 Abreviews](#) [15 References](#) [5 图像](#)

概述

产品名称	Anti-Hsp90 alpha抗体[2G5.G3]
描述	小鼠单克隆抗体[2G5.G3] to Hsp90 alpha
宿主	Mouse
特异性	ab79849 is Hsp90 alpha specific (>96% alpha specific by ELISA).
经测试应用	适用于: Flow Cyt, IHC-P, ICC/IF, WB
种属反应性	与反应: Mouse, Human
免疫原	Recombinant full length protein corresponding to Human Hsp90 alpha. Database link: P07900
阳性对照	WB: HEK293T, HAP1 and HeLa whole cell lysate. IHC-P: Human testis tissue. ICC/IF: HaCaT cells. Flow Cyt: HeLa cells.
常规说明	<p>The Life Science industry has been in the grips of a reproducibility crisis for a number of years. Abcam is leading the way in addressing this with our range of recombinant monoclonal antibodies and knockout edited cell lines for gold-standard validation. Please check that this product meets your needs before purchasing.</p> <p>If you have any questions, special requirements or concerns, please send us an inquiry and/or contact our Support team ahead of purchase. Recommended alternatives for this product can be found below, along with publications, customer reviews and Q&As</p>

性能

形式	Liquid
存放说明	Shipped at 4°C. Store at -20°C. Stable for 12 months at -20°C.
存储溶液	Preservative: 0.09% Sodium azide Constituents: PBS, 50% Glycerol
纯度	Protein G purified
克隆	单克隆
克隆编号	2G5.G3
同种型	IgG1

轻链类型kappa

应用

The Abpromise guarantee **Abpromise™**承诺保证使用ab79849于以下的经测试应用

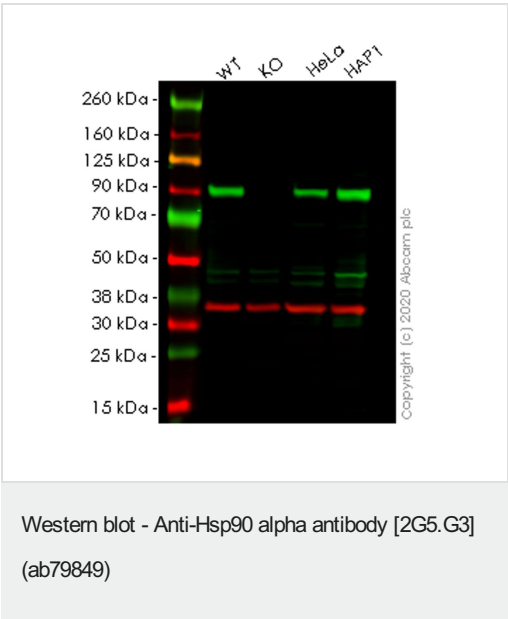
“应用说明”部分 下显示的仅为推荐的起始稀释度;实际最佳的稀释度/浓度应由使用者检定。

应用	Ab评论	说明
Flow Cyt		Use 1µg for 10 ⁶ cells. ab170190 - Mouse monoclonal IgG1, is suitable for use as an isotype control with this antibody.
IHC-P		Use a concentration of 0.5 µg/ml. Perform heat mediated antigen retrieval with citrate buffer pH 6 before commencing with IHC staining protocol.
ICC/IF		1/100.
WB	★★★★★ (1)	1/1000 - 1/2000. Predicted molecular weight: 85 kDa.

靶标

功能	Molecular chaperone. Has ATPase activity.
序列相似性	Belongs to the heat shock protein 90 family.
翻译后修饰	ISGylated.
细胞定位	Cytoplasm. Melanosome. Identified by mass spectrometry in melanosome fractions from stage I to stage IV.

图片



All lanes : Anti-Hsp90 alpha antibody [2G5.G3] (ab79849) at 1/1000 dilution

Lane 1 : Wild-type HEK-293T (Human epithelial cell line from embryonic kidney transformed with large T antigen) whole cell lysate

Lane 2 : HSP90AA1 knockout HEK-293T (Human epithelial cell line from embryonic kidney transformed with large T antigen) whole cell lysate

Lane 3 : HeLa (Human epithelial cell line from cervix adenocarcinoma) whole cell lysate

Lane 4 : HAP1 whole cell lyate

Lysates/proteins at 20 µg per lane.

Secondary

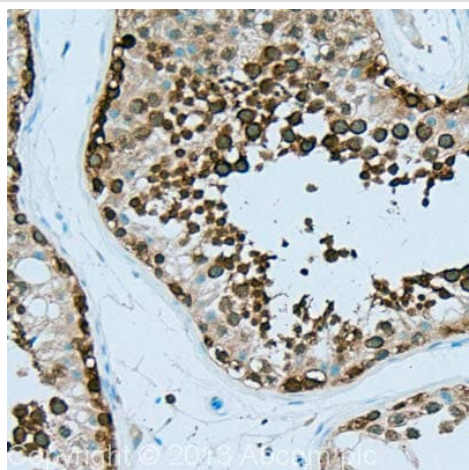
All lanes : Goat Anti-Rabbit IgG H&L (IRDye® 680RD)
preadsorbed ([ab216777](#)) at 1/10000 dilution

Predicted band size: 85 kDa

Observed band size: 90 kDa

Lanes 1-4: Merged signal (red and green). Green - ab79849 observed at 90 kDa. Red - loading control [ab181602](#) observed at 36 kDa.

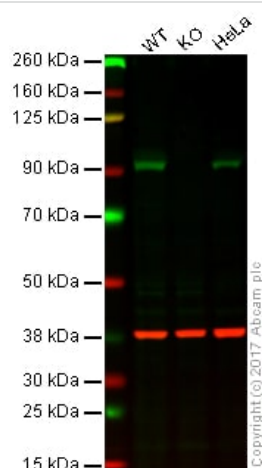
ab79849 Anti-Hsp90 alpha antibody [2G5.G3] was shown to specifically react with Hsp90 alpha in wild-type HEK-293T cells. Loss of signal was observed when knockout cell line [ab266591](#) (knockout cell lysate [ab258458](#)) was used. Wild-type and Hsp90 alpha knockout samples were subjected to SDS-PAGE. ab79849 and Anti-GAPDH antibody[EPR16891] - Loading Control ([ab181602](#)) were incubated overnight at 4°C at 1 in 1000 dilution and 1 in 20000 dilution respectively. Blots were developed with Goat anti-Rabbit IgG H&L (IRDye® 680RD) preadsorbed ([ab216777](#)) and Goat anti-Mouse IgG H&L (IRDye® 800CW) preadsorbed ([ab216772](#)) secondary antibodies at 1 in 20000 dilution for 1 hour at room temperature before imaging.



Immunohistochemistry (Formalin/PFA-fixed paraffin-embedded sections) - Anti-Hsp90 alpha antibody [2G5.G3] (ab79849)

IHC image of Hsp90 alpha staining in Human Testis formalin fixed paraffin embedded tissue section, performed on a Leica Bond™ system using the standard protocol F. The section was pre-treated using heat mediated antigen retrieval with sodium citrate buffer (pH6, epitope retrieval solution 1) for 20 mins. The section was then incubated with ab79849, 0.5 µg/ml, for 15 mins at room temperature and detected using an HRP conjugated compact polymer system. DAB was used as the chromogen. The section was then counterstained with haematoxylin and mounted with DPX.

For other IHC staining systems (automated and non-automated) customers should optimize variable parameters such as antigen retrieval conditions, primary antibody concentration and antibody incubation times.



Western blot - Anti-Hsp90 alpha antibody [2G5.G3] (ab79849)

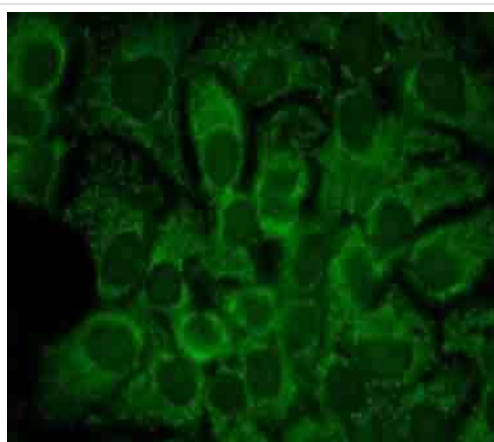
Lane 1: Wild-type HAP1 whole cell lysate (20 µg)

Lane 2: Hsp90 alpha knockout HAP1 whole cell lysate (20 µg)

Lane 3: HeLa whole cell lysate (20 µg)

Lanes 1 - 3: Merged signal (red and green). Green - ab79849 observed at 90 kDa. Red - loading control, [ab181602](#), observed at 37 kDa.

ab79849 was shown to specifically react with Hsp90 alpha in wild-type HAP1 cells as signal was lost in Hsp90 alpha knockout cells. Wild-type and Hsp90 alpha knockout samples were subjected to SDS-PAGE. Ab79849 and [ab181602](#) (Rabbit anti GAPDH loading control) were incubated overnight at 4°C at 1/2000 dilution and 1/20,000 dilution respectively. Blots were developed with Goat anti-Mouse IgG H&L (IRDye® 800CW) preabsorbed ([ab216772](#)) and Goat anti-Rabbit IgG H&L (IRDye® 680RD) preabsorbed ([ab216777](#)) secondary antibodies at 1/20,000 dilution for 1 hour at room temperature before imaging.



Immunocytochemistry/ Immunofluorescence - Anti-Hsp90 alpha antibody [2G5.G3] (ab79849)

ab79849 at 1/100 dilution staining Hsp90 alpha in human keratinocyte cell line HaCaT by Immunocytochemistry/ immunofluorescence. A Fluorophore conjugated goat anti mouse was used as secondary at 1/50 dilution.

Flow Cytometry - Anti-Hsp90 alpha antibody [2G5.G3] (ab79849)

Overlay histogram showing HeLa cells stained with ab79849 (red line). The cells were fixed with 80% methanol (5 min) and then permeabilized with 0.1% PBS-Tween for 20 min. The cells were then incubated in 1x PBS / 10% normal goat serum / 0.3M glycine to block non-specific protein-protein interactions followed by the antibody (ab79849, 1µg/1x10⁶ cells) for 30 min at 22°C. The secondary antibody used was DyLight® 488 goat anti-mouse IgG (H+L) ([ab96879](#)) at 1/500 dilution for 30 min at 22°C. Isotype

control antibody (black line) was mouse IgG1 [ICIGG1] (**ab91353**, 2µg/1x10⁶ cells) used under the same conditions. Acquisition of >5,000 events was performed.

Please note: All products are "FOR RESEARCH USE ONLY. NOT FOR USE IN DIAGNOSTIC PROCEDURES"

Our Abpromise to you: Quality guaranteed and expert technical support

- Replacement or refund for products not performing as stated on the datasheet
- Valid for 12 months from date of delivery
- Response to your inquiry within 24 hours
- We provide support in Chinese, English, French, German, Japanese and Spanish
- Extensive multi-media technical resources to help you
- We investigate all quality concerns to ensure our products perform to the highest standards

If the product does not perform as described on this datasheet, we will offer a refund or replacement. For full details of the Abpromise, please visit <https://www.abcam.cn/abpromise> or contact our technical team.

Terms and conditions

- Guarantee only valid for products bought direct from Abcam or one of our authorized distributors