


Anti-Hsp22/HSPB8 antibody [EPR9714] ab151552

敲除验证
重组
RabMAb

★★★★★
[2 Abreviews](#)
[7 References](#)
[10 图像](#)

概述

产品名称	Anti-Hsp22/HSPB8抗体[EPR9714]
描述	兔单克隆抗体[EPR9714] to Hsp22/HSPB8
宿主	Rabbit
经测试应用	适用于: ICC/IF, IHC-P, WB 不适用于: IP
种属反应性	与反应: Mouse, Human 预测可用于: Rat 
免疫原	Synthetic peptide corresponding to Human Hsp22/HSPB8. The immunogen used for this product shares 64% homology with Hsp27. Cross-reactivity with this protein has not been confirmed experimentally.
阳性对照	Fetal heart and fetal muscle lysates; HeLa cell lysate; Human skeletal muscle tissue; A673 cells
常规说明	This product is a recombinant monoclonal antibody, which offers several advantages including: <ul style="list-style-type: none"> - High batch-to-batch consistency and reproducibility - Improved sensitivity and specificity - Long-term security of supply - Animal-free production For more information see here . Our RabMAb [®] technology is a patented hybridoma-based technology for making rabbit monoclonal antibodies. For details on our patents, please refer to RabMAb[®] patents .

性能

形式	Liquid
存放说明	Shipped at 4°C. Store at -20°C.
存储溶液	pH: 7.2 Preservative: 0.01% Sodium azide Constituents: 9% PBS, 40% Glycerol (glycerin, glycerine), 0.05% BSA, 50% Tissue culture supernatant
纯度	Protein A purified
克隆	单克隆

克隆编号

EPR9714

同种型

IgG

应用

The Abpromise guarantee

Abpromise™ 承诺保证使用 ab151552 于以下的经测试应用

“应用说明”部分下显示的仅为推荐的起始稀释度；实际最佳的稀释度/浓度应由使用者检定。

应用	Ab评论	说明
ICC/IF		1/50 - 1/100.
IHC-P		1/50 - 1/100. Perform heat mediated antigen retrieval with citrate buffer pH 6 before commencing with IHC staining protocol.
WB	★★★★★ (1)	1/1000 - 1/10000. Predicted molecular weight: 21 kDa.

应用说明

Is unsuitable for IP.

靶标

功能

Displays temperature-dependent chaperone activity.

组织特异性

Predominantly expressed in skeletal muscle and heart.

疾病相关

Neuronopathy, distal hereditary motor, 2A
Charcot-Marie-Tooth disease 2L

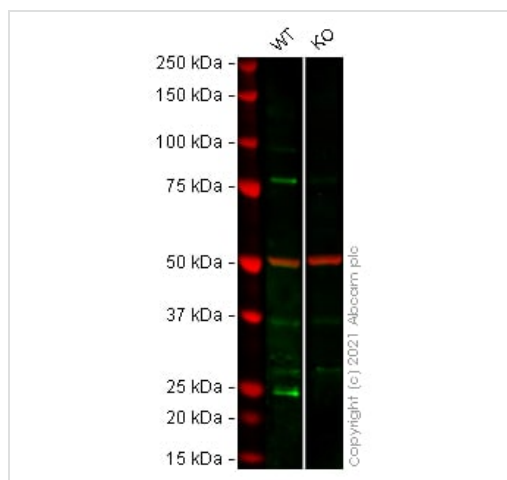
序列相似性

Belongs to the small heat shock protein (HSP20) family.

细胞定位

Cytoplasm. Nucleus. Translocates to nuclear foci during heat shock.

图片



Western blot - Anti-Hsp22/HSPB8 antibody
[EPR9714] (ab151552)

All lanes : Anti-Hsp22/HSPB8 antibody [EPR9714] (ab151552) at 1/1000 dilution

Lane 1 : Wild-type HeLa (Human epithelial cell line from cervix adenocarcinoma) whole cell lysate

Lane 2 : HSPB8 knockout HeLa (Human epithelial cell line from cervix adenocarcinoma) whole cell lysate

Lysates/proteins at 20 µg per lane.

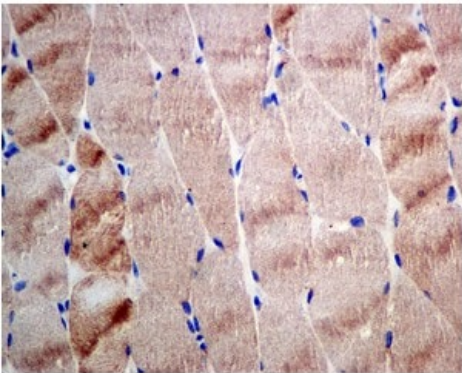
Performed under reducing conditions.

Predicted band size: 21 kDa

Observed band size: 21 kDa

Lanes 1 - 2: Merged signal (red and green). Green - ab151552 observed at 212 kDa. Red - loading control **ab7291** (Mouse anti-Alpha Tubulin [DM1A]) observed at 55 kDa.

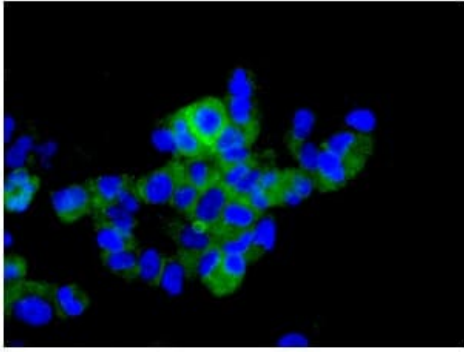
ab151552 was shown to react with Hsp22/HSPB8 in wild-type HeLa cells in Western blot with loss of signal observed in HSPB8 knockout cell line **ab265112** (HSPB8 knockout cell lysate **ab257468**). Wild-type HeLa and HSPB8 knockout cell lysates were subjected to SDS-PAGE. Membranes were blocked in 3 % milk in TBS-T (0.1 % Tween[®]) before incubation with ab151552 and **ab7291** (Mouse anti-Alpha Tubulin [DM1A]) overnight at 4 °C at a 1 in 1000 dilution and a 1 in 20000 dilution respectively. Blots were incubated with Goat anti-Rabbit IgG H&L (IRDye[®] 800CW) preabsorbed (**ab216773**) and Goat anti-Mouse IgG H&L (IRDye[®] 680RD) preabsorbed (**ab216776**) secondary antibodies at 1 in 20000 dilution for 1 h at room temperature before imaging.



Immunohistochemistry (Formalin/PFA-fixed paraffin-embedded sections) - Anti-Hsp22/HSPB8 antibody [EPR9714] (ab151552)

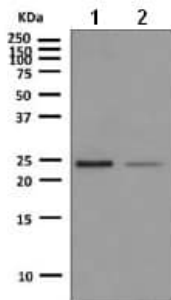
Immunohistochemical analysis of paraffin-embedded Human skeletal muscle tissue labeling Hsp22/HSPB8 with ab151552 at 1/50 dilution.

Perform heat mediated antigen retrieval with citrate buffer pH 6 before commencing with IHC staining protocol.



Immunocytochemistry/ Immunofluorescence - Anti-Hsp22/HSPB8 antibody [EPR9714] (ab151552)

Immunofluorescent analysis of A673 cells labeling Hsp22/HSPB8 with ab151552 at 1/50 dilution.



Western blot - Anti-Hsp22/HSPB8 antibody [EPR9714] (ab151552)

All lanes : Anti-Hsp22/HSPB8 antibody [EPR9714] (ab151552) at 1/1000 dilution

Lane 1 : Fetal heart lysate

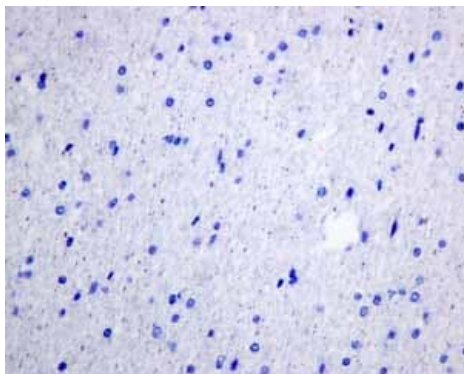
Lane 2 : Fetal muscle lysate

Lysates/proteins at 10 µg per lane.

Secondary

All lanes : HRP labeled goat anti-rabbit at 1/2000 dilution

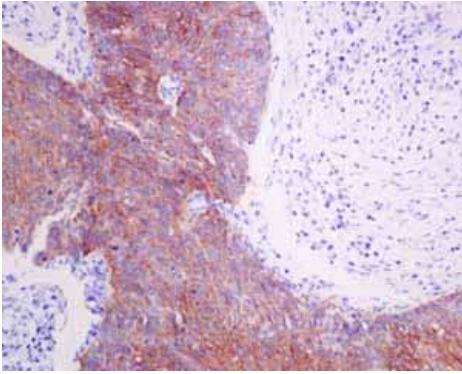
Predicted band size: 21 kDa



Immunohistochemistry (Formalin/PFA-fixed paraffin-embedded sections) - Anti-Hsp22/HSPB8 antibody [EPR9714] (ab151552)

Immunohistochemical analysis of paraffin embedded normal Human brain tissue using ab151552 showing -ve staining.

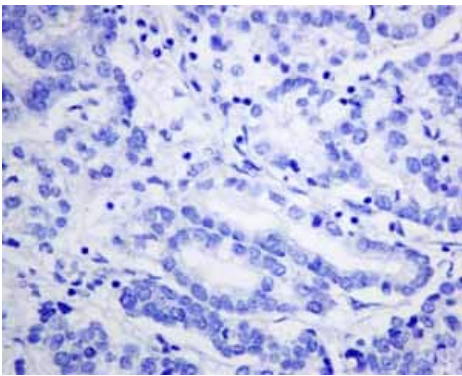
Perform heat mediated antigen retrieval with citrate buffer pH 6 before commencing with IHC staining protocol.



Immunohistochemistry (Formalin/PFA-fixed paraffin-embedded sections) - Anti-Hsp22/HSPB8 antibody [EPR9714] (ab151552)

Immunohistochemical analysis of paraffin embedded Human Cervical carcinoma tissue using ab151552 showing +ve staining.

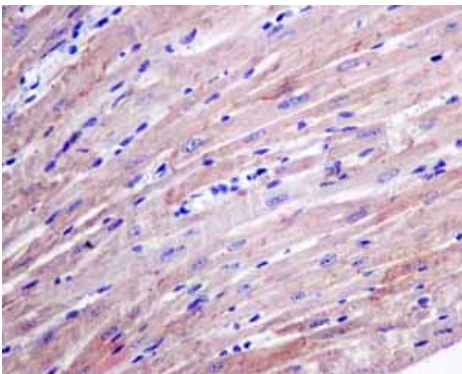
Perform heat mediated antigen retrieval with citrate buffer pH 6 before commencing with IHC staining protocol.



Immunohistochemistry (Formalin/PFA-fixed paraffin-embedded sections) - Anti-Hsp22/HSPB8 antibody [EPR9714] (ab151552)

Immunohistochemical analysis of paraffin embedded Human Gastric carcinoma tissue using ab151552 showing -ve staining.

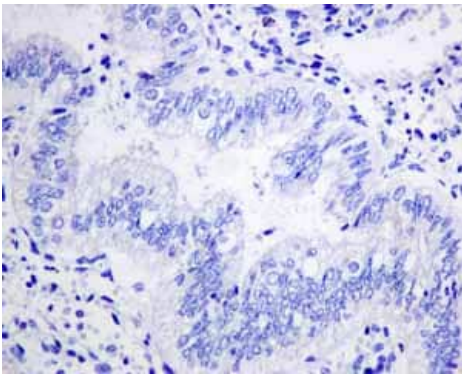
Perform heat mediated antigen retrieval with citrate buffer pH 6 before commencing with IHC staining protocol.



Immunohistochemistry (Formalin/PFA-fixed paraffin-embedded sections) - Anti-Hsp22/HSPB8 antibody [EPR9714] (ab151552)

Immunohistochemical analysis of paraffin embedded Mouse brain tissue using ab151552 showing +ve staining.

Perform heat mediated antigen retrieval with citrate buffer pH 6 before commencing with IHC staining protocol.



Immunohistochemical analysis of paraffin embedded normal Human uterus tissue using ab151552 showing -ve staining.

Perform heat mediated antigen retrieval with citrate buffer pH 6 before commencing with IHC staining protocol.

Immunohistochemistry (Formalin/PFA-fixed paraffin-embedded sections) - Anti-Hsp22/HSPB8 antibody [EPR9714] (ab151552)

Why choose a recombinant antibody?



Anti-Hsp22/HSPB8 antibody [EPR9714] (ab151552)

Please note: All products are "FOR RESEARCH USE ONLY. NOT FOR USE IN DIAGNOSTIC PROCEDURES"

Our Abpromise to you: Quality guaranteed and expert technical support

- Replacement or refund for products not performing as stated on the datasheet
- Valid for 12 months from date of delivery
- Response to your inquiry within 24 hours
- We provide support in Chinese, English, French, German, Japanese and Spanish
- Extensive multi-media technical resources to help you
- We investigate all quality concerns to ensure our products perform to the highest standards

If the product does not perform as described on this datasheet, we will offer a refund or replacement. For full details of the Abpromise, please visit <https://www.abcam.cn/abpromise> or contact our technical team.

Terms and conditions

-
- Guarantee only valid for products bought direct from Abcam or one of our authorized distributors