


Anti-hSET1/SET1 antibody ab70378

★★★★★ [3 Abreviews](#) [18 References](#) [4 图像](#)

概述

产品名称	Anti-hSET1/SET1抗体
描述	兔多克隆抗体to hSET1/SET1
宿主	Rabbit
经测试应用	适用于: ChIP, IHC-P, ChIP/Chip, WB, IP, ICC/IF
种属反应性	与反应: Mouse, Rat, Human 预测可用于: Rabbit, Horse, Guinea pig, Cow, Dog, Pig, Chimpanzee, Rhesus monkey, Gorilla, Chinese hamster, Orangutan, Elephant 
免疫原	Synthetic peptide corresponding to Human hSET1/SET1. Database link: O15047
常规说明	<p>The Life Science industry has been in the grips of a reproducibility crisis for a number of years. Abcam is leading the way in addressing this with our range of recombinant monoclonal antibodies and knockout edited cell lines for gold-standard validation. Please check that this product meets your needs before purchasing.</p> <p>If you have any questions, special requirements or concerns, please send us an inquiry and/or contact our Support team ahead of purchase. Recommended alternatives for this product can be found below, along with publications, customer reviews and Q&As</p>

性能

形式	Liquid
存放说明	Shipped at 4°C. Store at +4°C short term (1-2 weeks). Upon delivery aliquot. Store at -20°C. Avoid freeze / thaw cycle.
存储溶液	pH: 7 Preservative: 0.09% Sodium azide Constituent: Tris citrate/phosphate
纯度	Immunogen affinity purified
克隆	多克隆
同种型	IgG

应用

The Abpromise guarantee

Abpromise™ 承诺保证使用ab70378于以下的经测试应用

“应用说明”部分 下显示的仅为推荐的起始稀释度;实际最佳的稀释度/浓度应由使用者检定。

应用	Ab评论	说明
ChIP		Use at an assay dependent concentration.
IHC-P	★★★★★ (1)	1/2000 - 1/10000. Perform heat mediated antigen retrieval with citrate buffer pH 6 before commencing with IHC staining protocol.
ChIP/Chip		Use 10 µg for µg of chromatin.
WB	★★★★★ (1)	1/10000 - 1/25000. Detects a band of approximately 260-280 kDa (predicted molecular weight: 186 kDa).
IP		Use at 2-10 µg/mg of lysate.
ICC/IF	★★★★★ (1)	Use at an assay dependent concentration. Use with paraformaldehyde or methanol-fixed cells.

靶标

功能

Histone methyltransferase that specifically methylates 'Lys-4' of histone H3, when part of the SET1 histone methyltransferase (HMT) complex, but not if the neighboring 'Lys-9' residue is already methylated. H3 'Lys-4' methylation represents a specific tag for epigenetic transcriptional activation. The non-overlapping localization with SETD1B suggests that SETD1A and SETD1B make non-redundant contributions to the epigenetic control of chromatin structure and gene expression.

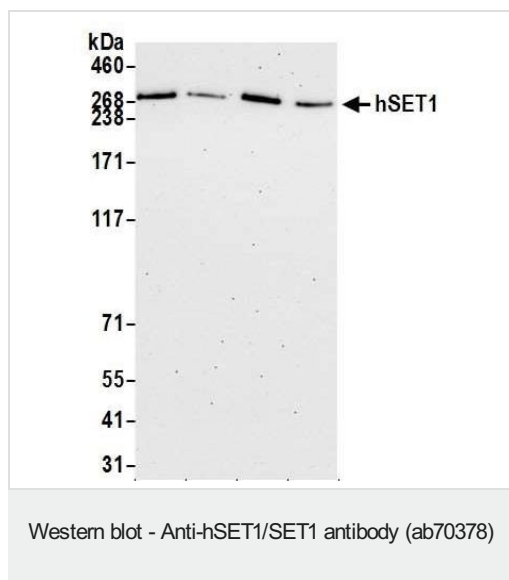
序列相似性

Contains 1 post-SET domain.
Contains 1 RRM (RNA recognition motif) domain.
Contains 1 SET domain.

细胞定位

Nucleus speckle. Chromosome. Localizes to a largely non-overlapping set of euchromatic nuclear speckles with SETD1B, suggesting that SETD1A and SETD1B each bind to a unique set of target genes.

图片



All lanes : Anti-hSET1/SET1 antibody (ab70378) at 1/25000 dilution

Lane 1 : HEK293T Whole cell lysate

Lane 2 : HeLa Whole cell lysate

Lane 3 : Jurkat Whole cell lysate

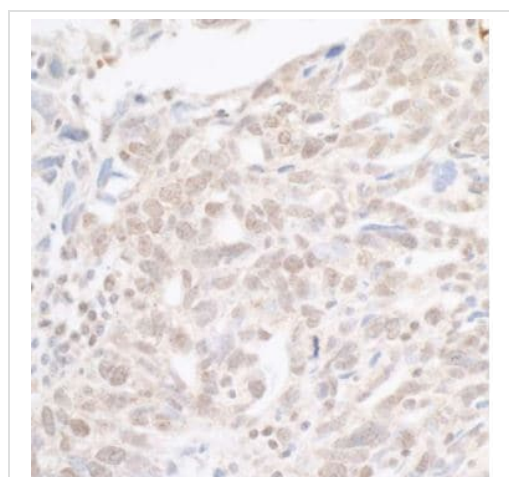
Lane 4 : Hep-G2 Whole cell lysate

Lysates/proteins at 10 µg per lane.

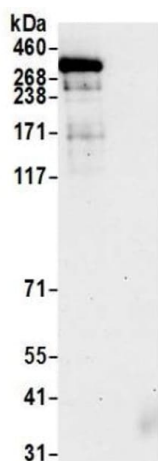
Predicted band size: 186 kDa

cells prepared using NETN lysis buffer

Detection: Chemiluminescence with an exposure time of 75 seconds.



Formalin-fixed, paraffin-embedded human ovarian carcinoma tissue stained for hSET1/SET1 using ab70378 at 1/5000 dilution in immunohistochemical analysis. Secondary: HRP-conjugated goat anti-rabbit IgG. Detection: DAB.

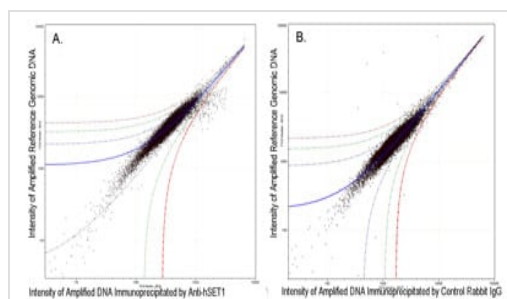


Immunoprecipitation - Anti-hSET1/SET1 antibody
(ab70378)

hSET1/SET1 was immunoprecipitated from 293T nuclear extracts with 6 µg/mg lysate ab70378. Western blot was performed from the immunoprecipitate using ab70378 at 1/1000 dilution.

Lane 1: ab70378 IP in 293T nuclear extract.

Lane 2: Control IgG IP in 293T nuclear extract.



ChIP on chip - Anti-hSET1/SET1 antibody (ab70378)

Ab70378 (10 µg) was used to immunoprecipitate chromatin from K562 cells. Immunoprecipitated and reference DNA were amplified by ligation-mediated PCR and the products labeled with fluorescent dUTPs. The labeled ChIP and reference DNA were pooled, hybridized to a DNA microarray and analyzed. As a control a similar experiment was performed using normal rabbit IgG.

Please note: All products are "FOR RESEARCH USE ONLY. NOT FOR USE IN DIAGNOSTIC PROCEDURES"

Our Abpromise to you: Quality guaranteed and expert technical support

- Replacement or refund for products not performing as stated on the datasheet
- Valid for 12 months from date of delivery
- Response to your inquiry within 24 hours
- We provide support in Chinese, English, French, German, Japanese and Spanish
- Extensive multi-media technical resources to help you
- We investigate all quality concerns to ensure our products perform to the highest standards

If the product does not perform as described on this datasheet, we will offer a refund or replacement. For full details of the Abpromise, please visit <https://www.abcam.cn/abpromise> or contact our technical team.

Terms and conditions

- Guarantee only valid for products bought direct from Abcam or one of our authorized distributors