


HRP Anti-PKC alpha antibody [Y124] ab205422

敲除验证
重组
RabMAb

3 图像

概述

| | |
|--------------|---|
| 产品名称 | HRP Anti-PKC alpha 抗体[Y124] |
| 描述 | HRP 兔单克隆抗体[Y124] to PKC alpha |
| 宿主 | Rabbit |
| 偶联物 | HRP |
| 经测试应用 | 适用于: IHC-P, WB |
| 种属反应性 | 与反应: Human 预测可用于: Mouse, Rat  |
| 免疫原 | Synthetic peptide. This information is proprietary to Abcam and/or its suppliers. |
| 阳性对照 | WB: HEK293 and wildtype HAP1 whole cell lysates. IHC-P: Normal human kidney tissue sections. |
| 常规说明 | <p>This product is a recombinant monoclonal antibody, which offers several advantages including:</p> <ul style="list-style-type: none"> - High batch-to-batch consistency and reproducibility - Improved sensitivity and specificity - Long-term security of supply - Animal-free production <p>For more information see here.</p> <p>Our RabMAb[®] technology is a patented hybridoma-based technology for making rabbit monoclonal antibodies. For details on our patents, please refer to RabMAb[®] patents.</p> |

性能

| | |
|-------------|--|
| 形式 | Liquid |
| 存放说明 | Shipped at 4°C. Store at +4°C short term (1-2 weeks). Upon delivery aliquot. Store at -20°C. Stable for 12 months at -20°C. Store In the Dark. |
| 存储溶液 | pH: 7.40 Preservative: 0.1% Proclin 300 Solution Constituents: 30% Glycerol (glycerin, glycerine), 1% BSA, PBS |
| 纯度 | Protein A purified |
| 克隆 | 单克隆 |
| 克隆编号 | Y124 |

应用

The Abpromise guarantee

Abpromise™承诺保证使用ab205422于以下的经测试应用

“应用说明”部分下显示的仅为推荐的起始稀释度；实际最佳的稀释度/浓度应由使用者检定。

| 应用 | Ab评论 | 说明 |
|-------|------|--|
| IHC-P | | 1/1000. Perform heat mediated antigen retrieval with citrate buffer pH 6 before commencing with IHC staining protocol. |
| WB | | 1/5000. Detects a band of approximately 77 kDa (predicted molecular weight: 77 kDa). |

靶标

功能

This is a calcium-activated, phospholipid-dependent, serine- and threonine-specific enzyme. May play a role in cell motility by phosphorylating CSPG4.

PKC is activated by diacylglycerol which in turn phosphorylates a range of cellular proteins. PKC also serves as the receptor for phorbol esters, a class of tumor promoters.

序列相似性

Belongs to the protein kinase superfamily. AGC Ser/Thr protein kinase family. PKC subfamily.

Contains 1 AGC-kinase C-terminal domain.

Contains 1 C2 domain.

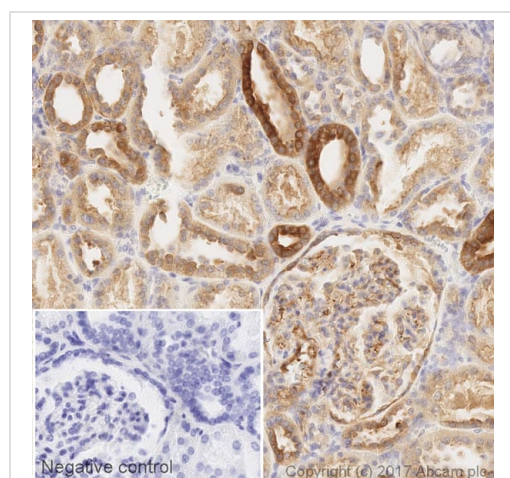
Contains 2 phorbol-ester/DAG-type zinc fingers.

Contains 1 protein kinase domain.

细胞定位

Cytoplasm. Cell membrane. Nucleus.

图片



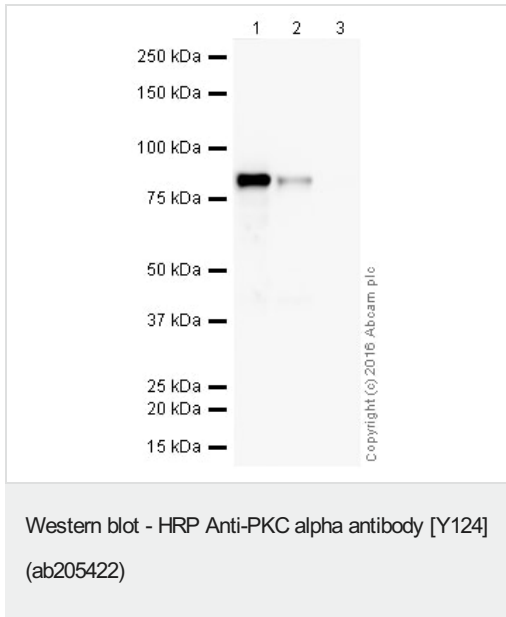
Immunohistochemistry (Formalin/PFA-fixed paraffin-embedded sections) - HRP Anti-PKC alpha antibody [Y124] (ab205422)

IHC image of PKC alpha staining in a section of formalin-fixed paraffin-embedded normal human kidney*, performed on a Leica BOND™. The section was pre-treated using heat mediated antigen retrieval with sodium citrate buffer (pH6, epitope retrieval solution 1) for 20mins. The section was then incubated with ab205422, 1/1000 dilution, for 15 mins at room temperature. DAB was used as the chromogen. The section was then counterstained with haematoxylin and mounted with DPX. The inset negative control image is taken from an identical assay without primary antibody.

For other IHC staining systems (automated and non-automated) customers should optimize variable parameters such as antigen retrieval conditions, primary antibody concentration and antibody incubation times.

*Tissue obtained from the Human Research Tissue Bank,

supported by the NIHR Cambridge Biomedical Research Centre



All lanes : HRP Anti-PKC alpha antibody [Y124] (ab205422) at 1/5000 dilution

Lane 1 : HEK293 (Human embryonic kidney cell line) Whole Cell Lysate at 10 µg

Lane 2 : Wild-type HAP1 cell lysate at 20 µg

Lane 3 : PKC alpha knockout HAP1 cell lysate at 20 µg

Developed using the ECL technique.

Performed under reducing conditions.

Predicted band size: 77 kDa

Observed band size: 77 kDa

Exposure time: 2 minutes

This blot was produced using a 4-12% Bis-tris gel under the MOPS buffer system. The gel was run at 200V for 50 minutes before being transferred onto a Nitrocellulose membrane at 30V for 70 minutes. The membrane was then blocked for an hour using 3% milk before being incubated with ab205422 overnight at 4°C. Antibody binding was visualised using ECL development solution [ab133406](#).

Why choose a recombinant antibody?

- Research with confidence**
Consistent and reproducible results
- Long-term and scalable supply**
Recombinant technology
- Success from the first experiment**
Confirmed specificity
- Ethical standards compliant**
Animal-free production

HRP Anti-PKC alpha antibody [Y124] (ab205422)

Please note: All products are "FOR RESEARCH USE ONLY. NOT FOR USE IN DIAGNOSTIC PROCEDURES"

Our Abpromise to you: Quality guaranteed and expert technical support

- Replacement or refund for products not performing as stated on the datasheet
- Valid for 12 months from date of delivery
- Response to your inquiry within 24 hours

- We provide support in Chinese, English, French, German, Japanese and Spanish
- Extensive multi-media technical resources to help you
- We investigate all quality concerns to ensure our products perform to the highest standards

If the product does not perform as described on this datasheet, we will offer a refund or replacement. For full details of the Abpromise, please visit <https://www.abcam.cn/abpromise> or contact our technical team.

Terms and conditions

- Guarantee only valid for products bought direct from Abcam or one of our authorized distributors