

HRP Anti-PD-L1 antibody [28-8] ab209961

重组 RabMAb

2 图像

概述

产品名称	HRP Anti-PD-L1 抗体[28-8]
描述	HRP 兔单克隆抗体[28-8] to PD-L1
宿主	Rabbit
偶联物	HRP
经测试应用	适用于: WB
种属反应性	与反应: Human
免疫原	Fusion protein. This information is proprietary to Abcam and/or its suppliers.
阳性对照	WB: CHO-PD-L1 whole cell lysate.
常规说明	Anti-PD-L1 antibody [28-8] has been used as detector antibody in <b>Human PD-L1 SimpleStep ELISA® kit (ab214565)</b> .  Our RabMAb® technology is a patented hybridoma-based technology for making rabbit monoclonal antibodies. For details on our patents, please refer to <a href="#">RabMAb® patents</a> .

性能

形式	Liquid
存放说明	Shipped at 4°C. Store at +4°C short term (1-2 weeks). Upon delivery aliquot. Store at -20°C. Avoid freeze / thaw cycle. Store In the Dark.
存储溶液	pH: 7.40 Preservative: 0.1% Proclin 300 Solution Constituents: 1% BSA, 30% Glycerol (glycerin, glycerine), PBS
纯度	Protein A purified
克隆	单克隆
克隆编号	28-8
同种型	IgG

应用

The Abpromise guarantee

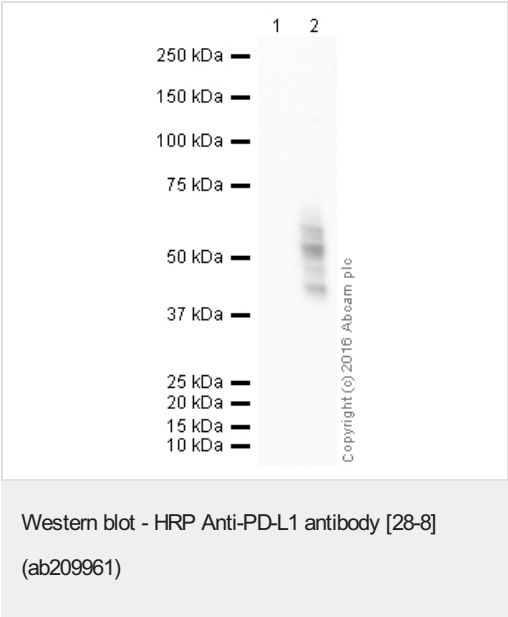
Abpromise™承诺保证使用ab209961于以下的经测试应用

“应用说明”部分 下显示的仅为推荐的起始稀释度;实际最佳的稀释度/浓度应由使用者检定。

应用	Ab评论	说明
WB		1/1000. Predicted molecular weight: 33 kDa.

靶标	
功能	Involved in the costimulatory signal, essential for T-cell proliferation and production of IL10 and IFNG, in an IL2-dependent and a PDCD1-independent manner. Interaction with PDCD1 inhibits T-cell proliferation and cytokine production.
组织特异性	Highly expressed in the heart, skeletal muscle, placenta and lung. Weakly expressed in the thymus, spleen, kidney and liver. Expressed on activated T- and B-cells, dendritic cells, keratinocytes and monocytes.
序列相似性	Belongs to the immunoglobulin superfamily. BTN/MOG family. Contains 1 Ig-like C2-type (immunoglobulin-like) domain. Contains 1 Ig-like V-type (immunoglobulin-like) domain.
细胞定位	Cell membrane and Endomembrane system.

图片



**All lanes :** HRP Anti-PD-L1 antibody [28-8] (ab209961) at 1/1000 dilution

**Lane 1 :** CHO-S  
**Lane 2 :** CHO-PD-L1

Lysates/proteins at 10 µg per lane.

Developed using the ECL technique.

Performed under reducing conditions.





**Predicted band size:** 33 kDa  
**Observed band size:** 40-60 kDa

**Exposure time:** 20 minutes

This blot was produced using a 4-12% Bis-tris gel under the MOPS buffer system. The gel was run at 200V for 50 minutes before being transferred onto a Nitrocellulose membrane at 30V for 70 minutes.

The membrane was then blocked for an hour using 3% milk before being incubated with ab209961 overnight at 4°C. Antibody binding was visualised using ECL development solution **ab133406**.

Why choose a recombinant antibody?

 <p><b>Research with confidence</b> Consistent and reproducible results</p>	 <p><b>Long-term and scalable supply</b> Recombinant technology</p>
 <p><b>Success from the first experiment</b> Confirmed specificity</p>	 <p><b>Ethical standards compliant</b> Animal-free production</p>

HRP Anti-PD-L1 antibody [28-8] (ab209961)

**Please note:** All products are "FOR RESEARCH USE ONLY. NOT FOR USE IN DIAGNOSTIC PROCEDURES"

### Our Abpromise to you: Quality guaranteed and expert technical support

---

- Replacement or refund for products not performing as stated on the datasheet
- Valid for 12 months from date of delivery
- Response to your inquiry within 24 hours
- We provide support in Chinese, English, French, German, Japanese and Spanish
- Extensive multi-media technical resources to help you
- We investigate all quality concerns to ensure our products perform to the highest standards

If the product does not perform as described on this datasheet, we will offer a refund or replacement. For full details of the Abpromise, please visit <https://www.abcam.cn/abpromise> or contact our technical team.

### Terms and conditions

---

- Guarantee only valid for products bought direct from Abcam or one of our authorized distributors