

HRP Anti-MERTK antibody [Y323] ab197643

重组 RabMAb

2 图像

概述

产品名称	HRP Anti-MERTK抗体[Y323]
描述	HRP兔单克隆抗体[Y323] to MERTK
宿主	Rabbit
偶联物	HRP
经测试应用	适用于: WB
种属反应性	与反应: Human 不与反应: Mouse, Rat
免疫原	Synthetic peptide. This information is proprietary to Abcam and/or its suppliers.
阳性对照	WB: HEK 293 whole cell lysate.
常规说明	Our RabMAb [®] technology is a patented hybridoma-based technology for making rabbit monoclonal antibodies. For details on our patents, please refer to RabMAb[®] patents .

性能

形式	Liquid
存放说明	Shipped at 4°C. Store at +4°C short term (1-2 weeks). Upon delivery aliquot. Store at -20°C. Avoid freeze / thaw cycle. Store In the Dark.
存储溶液	pH: 7.40 Preservative: 0.1% Proclin 300 Solution Constituents: 30% Glycerol (glycerin, glycerine), 1% BSA, PBS
纯度	Protein A purified
克隆	单克隆
克隆编号	Y323
同种型	IgG

应用

The Abpromise guarantee Abpromise[™] 承诺保证使用ab197643于以下的经测试应用

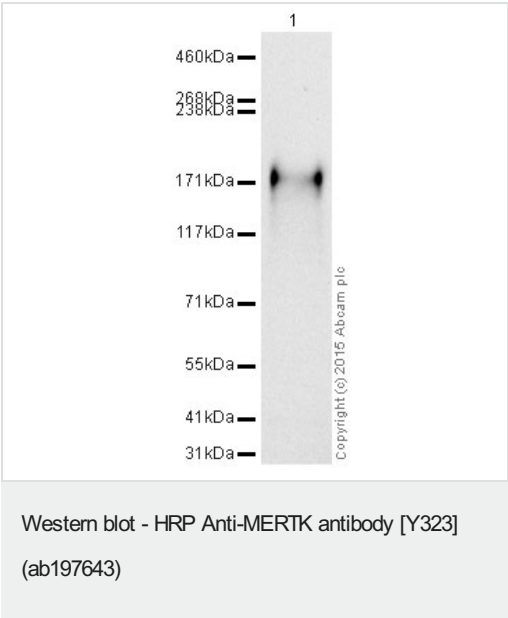
“应用说明”部分 下显示的仅为推荐的起始稀释度;实际最佳的稀释度/浓度应由使用者检定。

应用	Ab评论	说明
WB		1/1000. Detects a band of approximately 180 kDa.

靶标

功能	In case of filovirus infection, seems to function as a cell entry factor.
组织特异性	Not expressed in normal B- and T-lymphocytes but is expressed in numerous neoplastic B- and T-cell lines.
疾病相关	Defects in MERTK are the cause of retinitis pigmentosa type 38 (RP38) [MIM:613862]. RP38 is a retinal dystrophy belonging to the group of pigmentary retinopathies. Retinitis pigmentosa is characterized by retinal pigment deposits visible on fundus examination and primary loss of rod photoreceptor cells followed by secondary loss of cone photoreceptors. Patients typically have night vision blindness and loss of midperipheral visual field. As their condition progresses, they lose their far peripheral visual field and eventually central vision as well.
序列相似性	Belongs to the protein kinase superfamily. Tyr protein kinase family. AXL/UFO subfamily. Contains 2 fibronectin type-III domains. Contains 2 Ig-like C2-type (immunoglobulin-like) domains. Contains 1 protein kinase domain.
细胞定位	Membrane.

图片



HRP Anti-MERTK antibody [Y323] (ab197643) at 1/1000 dilution + HEK293 (Human embryonic kidney cell line) Whole Cell Lysate at 10 µg

Developed using the ECL technique.

Performed under reducing conditions.





Observed band size: 180 kDa

Exposure time: 20 minutes

This blot was produced using a 3-8% Tris Acetate gel under the TA buffer system. The gel was run at 150V for 60 minutes before being transferred onto a Nitrocellulose membrane at 30V for 70 minutes. The membrane was then blocked for an hour using 3% milk before being incubated with ab197643 overnight at 4°C. Antibody binding

was visualised using ECL development solution **ab133406**.

Why choose a recombinant antibody?

 Research with confidence Consistent and reproducible results	 Long-term and scalable supply Recombinant technology
 Success from the first experiment Confirmed specificity	 Ethical standards compliant Animal-free production

HRP Anti-MERTK antibody [Y323] (ab197643)

Please note: All products are "FOR RESEARCH USE ONLY. NOT FOR USE IN DIAGNOSTIC PROCEDURES"

Our Abpromise to you: Quality guaranteed and expert technical support

- Replacement or refund for products not performing as stated on the datasheet
- Valid for 12 months from date of delivery
- Response to your inquiry within 24 hours
- We provide support in Chinese, English, French, German, Japanese and Spanish
- Extensive multi-media technical resources to help you
- We investigate all quality concerns to ensure our products perform to the highest standards

If the product does not perform as described on this datasheet, we will offer a refund or replacement. For full details of the Abpromise, please visit <https://www.abcam.cn/abpromise> or contact our technical team.

Terms and conditions

- Guarantee only valid for products bought direct from Abcam or one of our authorized distributors