


HRP Anti-MAP1LC3A antibody [EP1528Y] ab205439

重组 RabMAb

3 图像

概述

产品名称	HRP Anti-MAP1LC3A抗体[EP1528Y]
描述	HRP兔单克隆抗体[EP1528Y] to MAP1LC3A
宿主	Rabbit
偶联物	HRP
经测试应用	适用于: IHC-P, WB
种属反应性	与反应: Human 预测可用于: Mouse, Rat 
免疫原	Synthetic peptide. This information is proprietary to Abcam and/or its suppliers.
阳性对照	WB: Human fetal brain tissue lysate. IHC-P: FFPE human hippocampus (normal) tissue sections.
常规说明	This product is a recombinant monoclonal antibody, which offers several advantages including: <ul style="list-style-type: none"> - High batch-to-batch consistency and reproducibility - Improved sensitivity and specificity - Long-term security of supply - Animal-free production For more information see here . Our RabMAb [®] technology is a patented hybridoma-based technology for making rabbit monoclonal antibodies. For details on our patents, please refer to RabMAb[®] patents .

性能

形式	Liquid
存放说明	Shipped at 4°C. Store at +4°C short term (1-2 weeks). Upon delivery aliquot. Store at -20°C. Stable for 12 months at -20°C. Store In the Dark.
存储溶液	pH: 7.40 Preservative: 0.1% Proclin 300 Solution Constituents: PBS, 1% BSA, 30% Glycerol (glycerin, glycerine)
纯度	Protein A purified
克隆	单克隆
克隆编号	EP1528Y

应用

The Abpromise guarantee

Abpromise™承诺保证使用ab205439于以下的经测试应用

“应用说明”部分 下显示的仅为推荐的起始稀释度;实际最佳的稀释度/浓度应由使用者检定。

应用	Ab评论	说明
IHC-P		1/150. Perform heat mediated antigen retrieval with citrate buffer pH 6 before commencing with IHC staining protocol.
WB		1/5000. Detects a band of approximately 16 kDa (predicted molecular weight: 14 kDa).

靶标

功能

Probably involved in formation of autophagosomal vacuoles (autophagosomes).

组织特异性

Most abundant in heart, brain, liver, skeletal muscle and testis but absent in thymus and peripheral blood leukocytes.

序列相似性

Belongs to the MAP1 LC3 family.

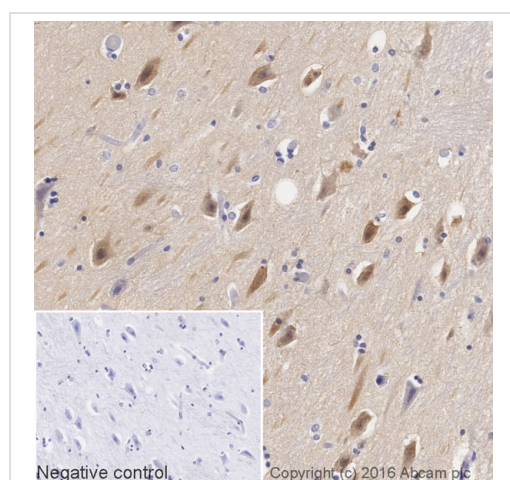
翻译后修饰

The precursor molecule is cleaved by APG4B/ATG4B to form the cytosolic form, LC3-I. This is activated by APG7L/ATG7, transferred to ATG3 and conjugated to phospholipid to form the membrane-bound form, LC3-II.

细胞定位

Cytoplasm > cytoskeleton. Endomembrane system. Cytoplasmic vesicle > autophagosome membrane. LC3-II binds to the autophagic membranes.

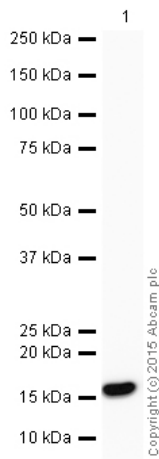
图片



IHC image of MAP1LC3A staining in a section of formalin-fixed paraffin-embedded normal human hippocampus tissue, performed on a Leica BOND™. The section was pre-treated using heat mediated antigen retrieval with sodium citrate buffer (pH6, epitope retrieval solution 1) for 20mins. The section was then incubated with ab205439, 1/150 dilution, for 15 mins at room temperature. DAB was used as the chromogen. The section was then counterstained with haematoxylin and mounted with DPX. The inset negative control image is taken from an identical assay without primary antibody.

Immunohistochemistry (Formalin/PFA-fixed paraffin-embedded sections) - HRP Anti-MAP1LC3A antibody [EP1528Y] (ab205439)

For other IHC staining systems (automated and non-automated) customers should optimize variable parameters such as antigen retrieval conditions, primary antibody concentration and antibody incubation times.



Western blot - HRP Anti-MAP1LC3A antibody [EP1528Y] (ab205439)

HRP Anti-MAP1LC3A antibody [EP1528Y] (ab205439) at 1/5000 dilution + Brain (Human) Tissue Lysate - fetal normal tissue at 10 µg

Developed using the ECL technique.

Performed under reducing conditions.


Predicted band size: 14 kDa

Observed band size: 16 kDa

Exposure time: 4 minutes

This blot was produced using a 4-12% Bis-tris gel under the MES buffer system. The gel was run at 200V for 35 minutes before being transferred onto a Nitrocellulose membrane at 30V for 70 minutes. The membrane was then blocked for an hour using 2% Bovine Serum Albumin before being incubated with ab205439 overnight at 4°C. Antibody binding was visualised using ECL development solution [ab133406](#).

Why choose a recombinant antibody?

 Research with confidence Consistent and reproducible results	 Long-term and scalable supply Recombinant technology
 Success from the first experiment Confirmed specificity	 Ethical standards compliant Animal-free production

HRP Anti-MAP1LC3A antibody [EP1528Y] (ab205439)

Please note: All products are "FOR RESEARCH USE ONLY. NOT FOR USE IN DIAGNOSTIC PROCEDURES"

Our Abpromise to you: Quality guaranteed and expert technical support

- Replacement or refund for products not performing as stated on the datasheet
- Valid for 12 months from date of delivery

- Response to your inquiry within 24 hours
- We provide support in Chinese, English, French, German, Japanese and Spanish
- Extensive multi-media technical resources to help you
- We investigate all quality concerns to ensure our products perform to the highest standards

If the product does not perform as described on this datasheet, we will offer a refund or replacement. For full details of the Abpromise, please visit <https://www.abcam.cn/abpromise> or contact our technical team.

Terms and conditions

- Guarantee only valid for products bought direct from Abcam or one of our authorized distributors