


HRP Anti-KDM1/LSD1 antibody [EPR6825] - Nuclear Marker ab195897

敲除验证
重组
RabMAb

4 图像

概述

产品名称	HRP Anti-KDM1/LSD1抗体[EPR6825] -核Marker
描述	HRP兔单克隆抗体[EPR6825] to KDM1/LSD1 -核Marker
宿主	Rabbit
偶联物	HRP
经测试应用	适用于: IHC-P, WB
种属反应性	与反应: Rat, Human 预测可用于: Mouse 
免疫原	Synthetic peptide. This information is proprietary to Abcam and/or its suppliers.
阳性对照	WB: HeLa, HAP1, Jurkat and PC12 whole cell lysates. IHC-P: FFPE Human Testis Normal
常规说明	<p>This product is a recombinant monoclonal antibody, which offers several advantages including:</p> <ul style="list-style-type: none"> - High batch-to-batch consistency and reproducibility - Improved sensitivity and specificity - Long-term security of supply - Animal-free production <p>For more information see here.</p> <p>Our RabMAb[®] technology is a patented hybridoma-based technology for making rabbit monoclonal antibodies. For details on our patents, please refer to RabMAb[®] patents.</p>

性能

形式	Liquid
存放说明	Shipped at 4°C. Store at +4°C short term (1-2 weeks). Upon delivery aliquot. Store at -20°C. Avoid freeze / thaw cycle. Store In the Dark.
存储溶液	<p>pH: 7.40</p> <p>Preservative: 0.1% Proclin 300 Solution</p> <p>Constituents: 30% Glycerol (glycerin, glycerine), 1% BSA, PBS</p>
纯度	Protein A purified
克隆	单克隆

克隆编号 EPR6825
同种型 IgG

应用

The Abpromise guarantee **Abpromise™** 承诺保证使用ab195897于以下的经测试应用

“应用说明”部分 下显示的仅为推荐的起始稀释度;实际最佳的稀释度/浓度应由使用者检定。

应用	Ab评论	说明
IHC-P		1/50. Perform heat mediated antigen retrieval with citrate buffer pH 6 before commencing with IHC staining protocol.
WB		1/5000. Detects a band of approximately 110 kDa (predicted molecular weight: 92 kDa).

靶标

功能 Histone demethylase that demethylates both 'Lys-4' (H3K4me) and 'Lys-9' (H3K9me) of histone H3, thereby acting as a coactivator or a corepressor, depending on the context. Acts by oxidizing the substrate by FAD to generate the corresponding imine that is subsequently hydrolyzed. Acts as a corepressor by mediating demethylation of H3K4me, a specific tag for epigenetic transcriptional activation. Demethylates both mono- (H3K4me1) and di-methylated (H3K4me2) H3K4me. May play a role in the repression of neuronal genes. Alone, it is unable to demethylate H3K4me on nucleosomes and requires the presence of RCOR1/CoREST to achieve such activity. Also acts as a coactivator of androgen receptor (ANDR)-dependent transcription, by being recruited to ANDR target genes and mediating demethylation of H3K9me, a specific tag for epigenetic transcriptional repression. The presence of PRKCB in ANDR-containing complexes, which mediates phosphorylation of 'Thr-6' of histone H3 (H3T6ph), a specific tag that prevents demethylation H3K4me, prevents H3K4me demethylase activity of KDM1A. Demethylates di-methylated 'Lys-370' of p53/TP53 which prevents interaction of p53/TP53 with TP53BP1 and represses p53/TP53-mediated transcriptional activation. Demethylates and stabilizes the DNA methylase DNMT1. Required for gastrulation during embryogenesis.

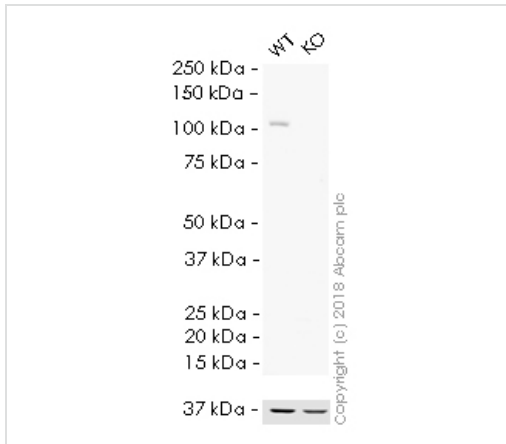
组织特异性 Ubiquitously expressed.

序列相似性 Belongs to the flavin monoamine oxidase family.
 Contains 1 SWIRM domain.

结构域 The SWIRM domain may act as an anchor site for a histone tail.

细胞定位 Nucleus.

图片



Western blot - HRP Anti-KDM1/LSD1 antibody [EPR6825] - Nuclear Marker (ab195897)

All lanes : HRP Anti-KDM1/LSD1 antibody [EPR6825] - Nuclear Marker (ab195897) at 1/5000 dilution

Lane 1 : Wild-type HAP1 whole cell lysate

Lane 2 : KDM1A (KDM1 / LSD1) knockout HAP1 whole cell lysate

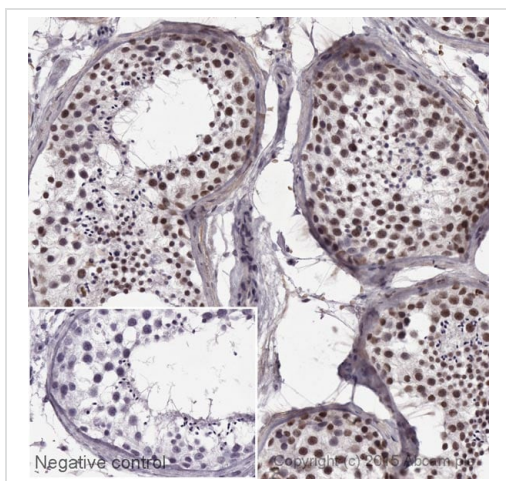
Lysates/proteins at 20 µg per lane.

Predicted band size: 92 kDa

Observed band size: 110 kDa

Exposure time: 20 minutes

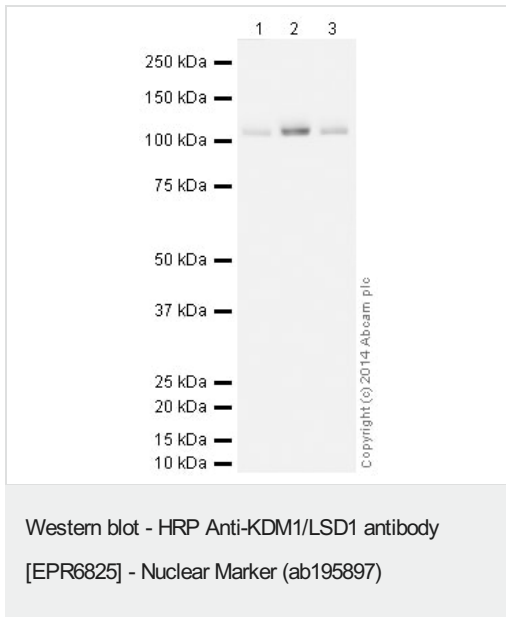
ab195897 was shown to specifically react with KDM1 / LSD1 in wild-type HAP1 cells as signal was lost in KDM1A (KDM1 / LSD1) knockout cells. Wild-type and KDM1A (KDM1 / LSD1) knockout samples were subjected to SDS-PAGE. Ab195897 and **ab184095** (Mouse monoclonal [mAbcam 9484] to GAPDH - Loading Control (Alexa Fluor® 680) loading control) were incubated overnight at 4°C at 1/5000 dilution and 1/20000 dilution respectively. The loading control was imaged using the Licor Odyssey CLx prior to blots being developed with ECL technique.



Immunohistochemistry (Formalin/PFA-fixed paraffin-embedded sections) - HRP Anti-KDM1/LSD1 antibody [EPR6825] - Nuclear Marker (ab195897)

IHC image of KDM1/LSD1 staining in a section of formalin-fixed paraffin-embedded normal human testis*. The section was pre-treated using pressure cooker heat mediated antigen retrieval with sodium citrate buffer (pH6) for 30mins, and incubated overnight at +4°C with ab195897 at 1/50 dilution. DAB was used as the chromogen (**ab103723**), diluted 1/100 and incubated for 10min at room temperature. The section was counterstained with haematoxylin and mounted with DPX. The inset negative control image is taken from an identical assay without primary antibody. For other IHC staining systems (automated and non-automated) customers should optimize variable parameters such as antigen retrieval conditions, primary antibody concentration and antibody incubation times.

*Tissue obtained from the Human Research Tissue Bank,



All lanes : HRP Anti-KDM1/LSD1 antibody [EPR6825] - Nuclear Marker (ab195897) at 1/5000 dilution

Lane 1 : HeLa whole cell lysate ([ab150035](#))

Lane 2 : Jurkat (Human T cell lymphoblast-like cell line) Whole Cell Lysate

Lane 3 : PC12 (Rat adrenal pheochromocytoma cell line) Whole Cell Lysate

Lysates/proteins at 10 µg per lane.

Developed using the ECL technique.

Performed under reducing conditions.

Predicted band size: 92 kDa

Observed band size: 110 kDa

Exposure time: 4 minutes

This blot was produced using a 4-12% Bis-tris gel under the MOPS buffer system. The gel was run at 200V for 50 minutes before being transferred onto a Nitrocellulose membrane at 30V for 70 minutes. The membrane was then blocked for an hour using 3% milk before being incubated with ab195897 overnight at 4°C. Antibody binding was visualised using ECL development solution [ab133406](#).

Why choose a recombinant antibody?



Research with confidence
Consistent and reproducible results



Long-term and scalable supply
Recombinant technology



Success from the first experiment
Confirmed specificity



Ethical standards compliant
Animal-free production

HRP Anti-KDM1/LSD1 antibody [EPR6825] -
Nuclear Marker (ab195897)

Please note: All products are "FOR RESEARCH USE ONLY. NOT FOR USE IN DIAGNOSTIC PROCEDURES"

Our Abpromise to you: Quality guaranteed and expert technical support

- Replacement or refund for products not performing as stated on the datasheet
- Valid for 12 months from date of delivery
- Response to your inquiry within 24 hours
- We provide support in Chinese, English, French, German, Japanese and Spanish
- Extensive multi-media technical resources to help you
- We investigate all quality concerns to ensure our products perform to the highest standards

If the product does not perform as described on this datasheet, we will offer a refund or replacement. For full details of the Abpromise, please visit <https://www.abcam.cn/abpromise> or contact our technical team.

Terms and conditions

- Guarantee only valid for products bought direct from Abcam or one of our authorized distributors