

### HRP Anti-GST antibody ab3416

★★★★★ [3 Abreviews](#) [30 References](#) [2 图像](#)

#### 概述

产品名称	HRP Anti-GST抗体
描述	HRP兔多克隆抗体to GST
宿主	Rabbit
偶联物	HRP
经测试应用	<b>适用于:</b> WB, ELISA
种属反应性	<b>与反应:</b> Species independent
免疫原	Full length native protein (purified) corresponding to Schistosoma japonicum GST. Glutathione-S-transferase (GST) from Schistosoma japonicum.
常规说明	<p>Abcam has not and does not intend to apply for the REACH Authorisation of customers' uses of products that contain European Authorisation list (Annex XIV) substances.</p> <p>It is the responsibility of our customers to check the necessity of application of REACH Authorisation, and any other relevant authorisations, for their intended uses.</p> <p>The Life Science industry has been in the grips of a reproducibility crisis for a number of years. Abcam is leading the way in addressing this with our range of recombinant monoclonal antibodies and knockout edited cell lines for gold-standard validation. Please check that this product meets your needs before purchasing.</p> <p>If you have any questions, special requirements or concerns, please send us an inquiry and/or contact our Support team ahead of purchase. Recommended alternatives for this product can be found below, along with publications, customer reviews and Q&amp;As</p>

#### 性能

形式	Liquid
存放说明	Shipped at 4°C. Store at +4°C.
存储溶液	pH: 7.00 Constituents: 3% Sodium deoxycholate, 3% Triton-X-100, 0.3% Tris HCl, 15% Sodium chloride
纯度	Immunogen affinity purified
纯化说明	Immunoaffinity purified using GST immobilized on a solid support.
克隆	多克隆
同种型	IgG

## 应用

**The Abpromise guarantee**      **Abpromise™**承诺保证使用ab3416于以下的经测试应用

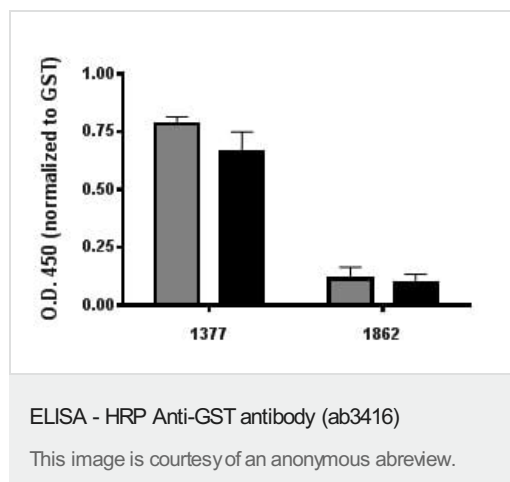
“应用说明”部分 下显示的仅为推荐的起始稀释度;实际最佳的稀释度/浓度应由使用者检定。

应用	Ab评论	说明
WB	★★★★★ (1)	1/1000 - 1/5000.
ELISA	★★★★★ (2)	1/10000 - 1/25000.

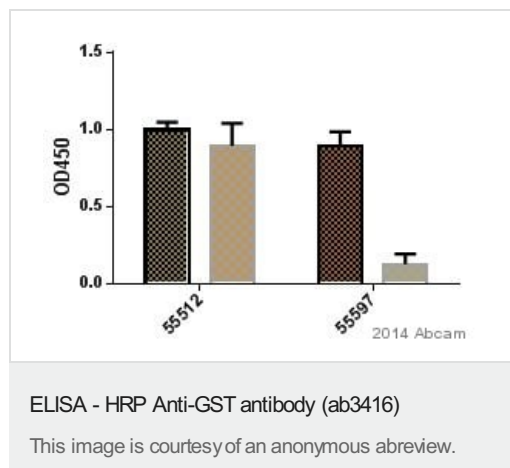
## 靶标

**相关性**      GST (Glutathione S-Transferase) is a 26kDa protein encoded by the parasitic helminth *Schistosoma japonicum* and widely used in the pGEX family of GST plasmid expression vectors as a fusion protein with foreign proteins.

## 图片



Graph of ELISA measuring levels of bound GST-tagged mosquito proteins. 5g of target protein was coated onto an ELISA plate and incubated overnight at 4°C. The plate was washed and GST-tagged mosquito proteins were incubated for an hour at RT. The proteins were washed off, GST-HRP antibody (ab3416) was diluted 1/5000 in 1%BSA in PBS and added for 30 min at RT. The plate was washed and TMB substrate was added for 20 min at RT. Stop solution was added and the O.D. of the wells read at 450 nm.



Graph of ELISA measuring levels of bound GST-tagged mosquito proteins. 5g of target protein was coated onto an ELISA plate and incubated overnight at 4°C. The plate was washed and GST-tagged mosquito proteins were incubated for an hour at RT. The proteins were washed off, GST-HRP antibody (ab3416) was diluted 1/5000 in 1%BSA in PBS and added for 30 min at RT. The plate was washed and TMB substrate was added for 20 min at RT. Stop solution was added and the O.D. of the wells read at 450 nm.

**Please note:** All products are "FOR RESEARCH USE ONLY. NOT FOR USE IN DIAGNOSTIC PROCEDURES"

### **Our Abpromise to you: Quality guaranteed and expert technical support**

---

- Replacement or refund for products not performing as stated on the datasheet
- Valid for 12 months from date of delivery
- Response to your inquiry within 24 hours
  
- We provide support in Chinese, English, French, German, Japanese and Spanish
- Extensive multi-media technical resources to help you
- We investigate all quality concerns to ensure our products perform to the highest standards

If the product does not perform as described on this datasheet, we will offer a refund or replacement. For full details of the Abpromise, please visit <https://www.abcam.cn/abpromise> or contact our technical team.

### **Terms and conditions**

---

- Guarantee only valid for products bought direct from Abcam or one of our authorized distributors