


HRP Anti-GAPDH antibody [mAbcam 9484] - Loading Control ab9482

★★★★★ [20 Abreviews](#) [208 References](#) [1 图像](#)

概述

产品名称	HRP Anti-GAPDH抗体[mAbcam 9484] - Loading Control
描述	HRP小鼠单克隆抗体[mAbcam 9484] to GAPDH - Loading Control
宿主	Mouse
偶联物	HRP
经测试应用	适用于: WB
种属反应性	与反应: Mouse, Rat, Human 预测可用于: Rabbit, Chicken, Cow, Dog, Xenopus laevis, Chinese hamster 
免疫原	Full length native protein (purified). This information is proprietary to Abcam and/or its suppliers.
阳性对照	WB: HeLa, HEK-293, NIH/3T3 and PC-12 whole cell lysates.
常规说明	<p>According to our customer's feedback this antibody does not recognise meningococcal GapA1 or GapA2 (GAPDH) recombinant proteins.</p> <p>This antibody has been conjugated with HRP. The concentration of the original antibody was 1 mg/ml, following conjugation the concentration observed will be higher.</p> <p>The Life Science industry has been in the grips of a reproducibility crisis for a number of years. Abcam is leading the way in addressing this with our range of recombinant monoclonal antibodies and knockout edited cell lines for gold-standard validation. Please check that this product meets your needs before purchasing.</p> <p>If you have any questions, special requirements or concerns, please send us an inquiry and/or contact our Support team ahead of purchase. Recommended alternatives for this product can be found below, along with publications, customer reviews and Q&As</p>

性能

形式	Liquid
存放说明	Shipped at 4°C. Store at +4°C short term (1-2 weeks). Upon delivery aliquot. Store at -20°C. Avoid freeze / thaw cycle. Store In the Dark.
存储溶液	Preservative: 0.1% 10% Proclin 300 Solution Constituents: PBS, 1% BSA, 30% Glycerol (glycerin, glycerine)
纯度	IgG fraction

克隆	单克隆
克隆编号	mAbcam 9484
骨髓瘤	Sp2/0-Ag14
同种型	IgG2b
轻链类型	kappa

应用

The Abpromise guarantee **Abpromise™** 承诺保证使用ab9482于以下的经测试应用

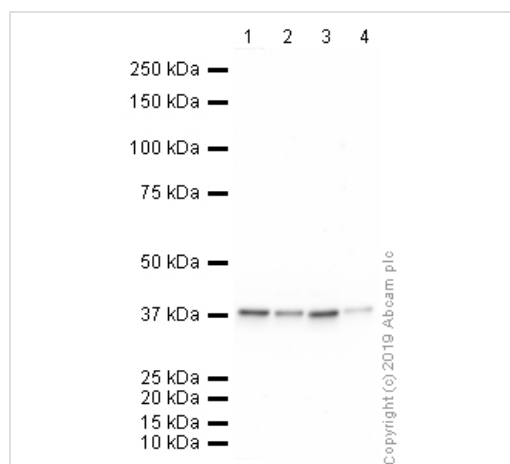
“应用说明”部分 下显示的仅为推荐的起始稀释度;实际最佳的稀释度/浓度应由使用者检定。

应用	Ab评论	说明
WB	★★★★★ (20)	1/1000 - 1/5000. Detects a band of approximately 40 kDa (predicted molecular weight: 40.2 kDa). NOT SUITABLE for blocking with milk. Block in 5% BSA for 1 hour. Our labs have thoroughly investigated the blocking conditions for this ab following concerning customer feedback on the lack of signal with some vials. We found that milk significantly decreases signal and is therefore not a suitable blocking agent

靶标

功能	Has both glyceraldehyde-3-phosphate dehydrogenase and nitrosylase activities, thereby playing a role in glycolysis and nuclear functions, respectively. Participates in nuclear events including transcription, RNA transport, DNA replication and apoptosis. Nuclear functions are probably due to the nitrosylase activity that mediates cysteine S-nitrosylation of nuclear target proteins such as SIRT1, HDAC2 and PRKDC (By similarity). Glyceraldehyde-3-phosphate dehydrogenase is a key enzyme in glycolysis that catalyzes the first step of the pathway by converting D-glyceraldehyde 3-phosphate (G3P) into 3-phospho-D-glyceroyl phosphate.
通路	Carbohydrate degradation; glycolysis; pyruvate from D-glyceraldehyde 3-phosphate: step 1/5.
序列相似性	Belongs to the glyceraldehyde-3-phosphate dehydrogenase family.
翻译后修饰	S-nitrosylation of Cys-152 leads to interaction with SIAH1, followed by translocation to the nucleus. ISGylated.
细胞定位	Cytoplasm > cytosol. Nucleus. Cytoplasm > perinuclear region. Membrane. Translocates to the nucleus following S-nitrosylation and interaction with SIAH1, which contains a nuclear localization signal (By similarity). Postnuclear and Perinuclear regions.

图片



Western blot - HRP Anti-GAPDH antibody [mAbcam 9484] - Loading Control (ab9482)

All lanes : HRP Anti-GAPDH antibody [mAbcam 9484] - Loading Control (ab9482) at 1/1000 dilution

Lane 1 : HeLa Whole Cell Lysate

Lane 2 : Hek293 Whole Cell Lysate

Lane 3 : NIH 3T3 Whole Cell Lysate

Lane 4 : PC12 Whole Cell Lysate

Lysates/proteins at 10 µg per lane.

Developed using the ECL technique.

Performed under reducing conditions.

Predicted band size: 40.2 kDa

Observed band size: 37 kDa

Exposure time: 4 minutes

Please note: All products are "FOR RESEARCH USE ONLY. NOT FOR USE IN DIAGNOSTIC PROCEDURES"

Our Abpromise to you: Quality guaranteed and expert technical support

- Replacement or refund for products not performing as stated on the datasheet
- Valid for 12 months from date of delivery
- Response to your inquiry within 24 hours
- We provide support in Chinese, English, French, German, Japanese and Spanish
- Extensive multi-media technical resources to help you
- We investigate all quality concerns to ensure our products perform to the highest standards

If the product does not perform as described on this datasheet, we will offer a refund or replacement. For full details of the Abpromise, please visit <https://www.abcam.cn/abpromise> or contact our technical team.

Terms and conditions

- Guarantee only valid for products bought direct from Abcam or one of our authorized distributors