

# HRP Anti-Chromogranin A antibody [EP1030Y] ab199194

**重组 RabMAb**

3 图像

### 概述

|       |   |
|-------|---|
| 产品名称  | HRP Anti-Chromogranin A抗体[EP1030Y]  |
| 描述    | HRP兔单克隆抗体[EP1030Y] to Chromogranin A  |
| 宿主    | Rabbit  |
| 偶联物   | HRP   |
| 经测试应用 | 适用于: WB, IHC-P  |
| 种属反应性 | 与反应: Human  |
| 免疫原   | Synthetic peptide. This information is proprietary to Abcam and/or its suppliers.   |
| 阳性对照  | WB: SH-SY5Y whole cell lysate. IHC-P: FFPE normal human pancreas tissue.  |
| 常规说明  | Our RabMAb <sup>®</sup> technology is a patented hybridoma-based technology for making rabbit monoclonal antibodies. For details on our patents, please refer to <a href="#">RabMAb<sup>®</sup> patents</a> . |

### 性能

|      |  |
|------|--|
| 形式   | Liquid   |
| 存放说明 | Shipped at 4°C. Store at +4°C short term (1-2 weeks). Upon delivery aliquot. Store at -20°C. Avoid freeze / thaw cycle. Store In the Dark. |
| 存储溶液 | pH: 7.40<br>Preservative: 0.1% Proclin 300 Solution<br>Constituents: 30% Glycerol (glycerin, glycerine), 1% BSA, PBS                       |
| 纯度   | Protein A purified   |
| 克隆   | 单克隆  |
| 克隆编号 | EP1030Y  |
| 同种型  | IgG  |

### 应用

**The Abpromise guarantee**      **Abpromise™** 承诺保证使用ab199194于以下的经测试应用

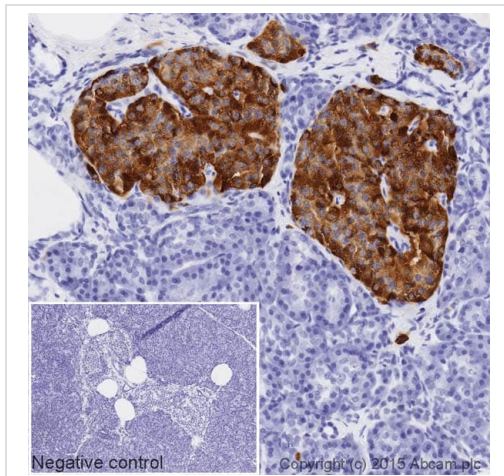
“应用说明”部分 下显示的仅为推荐的起始稀释度;实际最佳的稀释度/浓度应由使用者检定。

| 应用    | Ab评论 | 说明   |
|-------|------|--|
| WB    |      | 1/5000. Detects a band of approximately 90 kDa (predicted molecular weight: 51 kDa).   |
| IHC-P |      | 1/1000. Perform heat mediated antigen retrieval with citrate buffer pH 6 before commencing with IHC staining protocol.<br><b>ab199507</b> - Rabbit monoclonal IgG (HRP), is suitable for use as an isotype control with this antibody. |

## 靶标

|       |  |
|-------|--|
| 功能    | Pancreastatin strongly inhibits glucose induced insulin release from the pancreas.   |
| 序列相似性 | Belongs to the chromogranin/secretogranin protein family.  |
| 翻译后修饰 | Sulfated on tyrosine residues and/or contains sulfated glycans.<br>O-glycosylated with core 1 or possibly core 8 glycans.  |
| 细胞定位  | Secreted. Neuroendocrine and endocrine secretory granules.   |
| 形式    | According to the Swiss-Prot database, this protein has many different forms which correspond to various molecular weights; thus the possible variation from the predicted molecular weight of 51kDa. |

## 图片

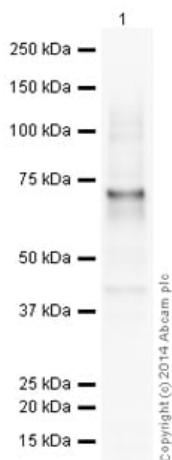


Immunohistochemistry (Formalin/PFA-fixed paraffin-embedded sections) - HRP Anti-Chromogranin A antibody [EP1030Y] (ab199194)

IHC image of Chromogranin A staining in a section of formalin-fixed paraffin-embedded normal human pancreas\*, performed on a Leica BOND™. The section was pre-treated using heat mediated antigen retrieval with sodium citrate buffer (pH6, epitope retrieval solution 1) for 20mins. The section was then incubated with ab199194, 1/1000 dilution, for 15 mins at room temperature. DAB was used as the chromogen. The section was then counterstained with haematoxylin and mounted with DPX. The inset negative control image is taken from an identical assay without primary antibody.

For other IHC staining systems (automated and non-automated) customers should optimize variable parameters such as antigen retrieval conditions, primary antibody concentration and antibody incubation times.

\*Tissue obtained from the Human Research Tissue Bank, supported by the NIHR Cambridge Biomedical Research Centre



Western blot - HRP Anti-Chromogranin A antibody [EP1030Y] (ab199194)

HRP Anti-Chromogranin A antibody [EP1030Y] (ab199194) at 1/5000 dilution + SHSY-5Y (Human neuroblastoma cell line) Whole Cell Lysate at 10 µg

Developed using the ECL technique.

Performed under reducing conditions.

**Predicted band size:** 51 kDa





**Observed band size:** 74 kDa

**Additional bands at:** 42 kDa (possible non-specific binding)

**Exposure time:** 16 minutes

This blot was produced using a 4-12% Bis-tris gel under the MOPS buffer system. The gel was run at 200V for 50 minutes before being transferred onto a Nitrocellulose membrane at 30V for 70 minutes. The membrane was then blocked for an hour using 2% Bovine Serum Albumin before being incubated with ab199194 overnight at 4°C. Antibody binding was visualised using ECL development solution [ab133406](#).

### Why choose a recombinant antibody?

|   |   |
|---|---|
| <br><b>Research with confidence</b><br>Consistent and reproducible results | <br><b>Long-term and scalable supply</b><br>Recombinant technology |
| <br><b>Success from the first experiment</b><br>Confirmed specificity      | <br><b>Ethical standards compliant</b><br>Animal-free production   |

HRP Anti-Chromogranin A antibody [EP1030Y] (ab199194)

## **Our Abpromise to you: Quality guaranteed and expert technical support**

---

- Replacement or refund for products not performing as stated on the datasheet
- Valid for 12 months from date of delivery
- Response to your inquiry within 24 hours
  
- We provide support in Chinese, English, French, German, Japanese and Spanish
- Extensive multi-media technical resources to help you
- We investigate all quality concerns to ensure our products perform to the highest standards

If the product does not perform as described on this datasheet, we will offer a refund or replacement. For full details of the Abpromise, please visit <https://www.abcam.cn/abpromise> or contact our technical team.

## **Terms and conditions**

---

- Guarantee only valid for products bought direct from Abcam or one of our authorized distributors