


HRP Anti-Cathepsin L + V antibody [33/2] ab197278

2 图像

概述

产品名称	HRP Anti-Cathepsin L + V抗体[33/2]
描述	HRP小鼠单克隆抗体[33/2] to Cathepsin L + V
宿主	Mouse
偶联物	HRP
经测试应用	适用于: IHC-P, WB
种属反应性	与反应: Human 预测可用于: Mouse, Rat 
免疫原	Full length native protein (purified) corresponding to Human Cathepsin L + V.
表位	Recognizes an epitope within amino acid residues GYGFE ₂₆₅ ST ₂₇₁ in procathepsin L and 169-175 in the mature cathepsin L molecule).
阳性对照	WB: Human lung and kidney (normal) tissue lysates. IHC-P: Normal human kidney tissue.
常规说明	<p>The Life Science industry has been in the grips of a reproducibility crisis for a number of years. Abcam is leading the way in addressing this with our range of recombinant monoclonal antibodies and knockout edited cell lines for gold-standard validation. Please check that this product meets your needs before purchasing.</p> <p>If you have any questions, special requirements or concerns, please send us an inquiry and/or contact our Support team ahead of purchase. Recommended alternatives for this product can be found below, along with publications, customer reviews and Q&As</p>

性能

形式	Liquid
存放说明	Shipped at 4°C. Store at +4°C short term (1-2 weeks). Upon delivery aliquot. Store at -20°C. Avoid freeze / thaw cycle. Store In the Dark.
存储溶液	pH: 7.40 Preservative: 0.1% Proclin 300 Solution Constituents: 30% Glycerol (glycerin, glycerine), 1% BSA, PBS
纯度	Affinity purified
克隆	单克隆
克隆编号	33/2

应用

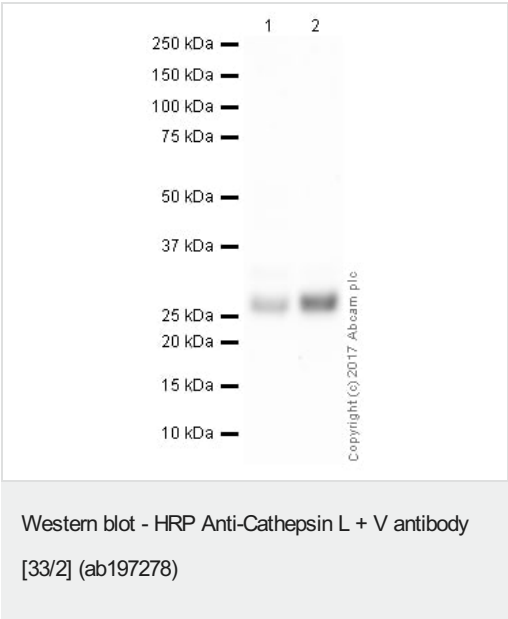
The Abpromise guarantee

Abpromise™承诺保证使用ab197278于以下的经测试应用

“应用说明”部分 下显示的仅为推荐的起始稀释度;实际最佳的稀释度/浓度应由使用者检定。

应用	Ab评论	说明
IHC-P		1/500. Perform heat mediated antigen retrieval with citrate buffer pH 6 before commencing with IHC staining protocol.
WB		1/5000. Detects a band of approximately 25 kDa (predicted molecular weight: 38 kDa). Abcam recommends using 3% milk as the blocking agent.

图片



All lanes : HRP Anti-Cathepsin L + V antibody [33/2] (ab197278)
at 1/5000 dilution

Lane 1 : Lung (Human) Tissue Lysate - adult normal tissue
Lane 2 : Human kidney tissue lysate - total protein (ab30203)

Lysates/proteins at 20 µg per lane.

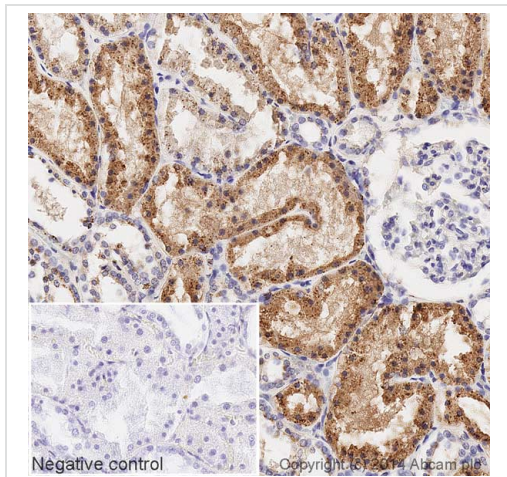
Developed using the ECL technique.

Performed under reducing conditions.

Predicted band size: 38 kDa
Observed band size: 25 kDa

Exposure time: 4 minutes

This blot was produced using a 4-12% Bis-tris gel under the MES buffer system. The gel was run at 200V for 35 minutes before being transferred onto a Nitrocellulose membrane at 30V for 70 minutes. The membrane was then blocked for an hour using 3% milk before being incubated with ab197278 overnight at 4°C. Antibody binding was visualised using ECL development solution ab133406.



Immunohistochemistry (Formalin/PFA-fixed paraffin-embedded sections) - HRP Anti-Cathepsin L + V antibody [33/2] (ab197278)

IHC image of Cathepsin L + V staining in a section of formalin-fixed paraffin-embedded normal human kidney*, performed on a Leica BOND. The section was pre-treated using heat mediated antigen retrieval with sodium citrate buffer (pH6, epitope retrieval solution 1) for 20mins. The section was then incubated with ab197278 at 1/500 dilution, for 15 mins at room temperature. DAB was used as the chromogen. The section was then counterstained with haematoxylin and mounted with DPX. The inset negative control image is taken from an identical assay without primary antibody.

For other IHC staining systems (automated and non-automated) customers should optimize variable parameters such as antigen retrieval conditions, primary antibody concentration and antibody incubation times.

*Tissue obtained from the Human Research Tissue Bank, supported by the NIHR Cambridge Biomedical Research Centre

Please note: All products are "FOR RESEARCH USE ONLY. NOT FOR USE IN DIAGNOSTIC PROCEDURES"

Our Abpromise to you: Quality guaranteed and expert technical support

- Replacement or refund for products not performing as stated on the datasheet
- Valid for 12 months from date of delivery
- Response to your inquiry within 24 hours
- We provide support in Chinese, English, French, German, Japanese and Spanish
- Extensive multi-media technical resources to help you
- We investigate all quality concerns to ensure our products perform to the highest standards

If the product does not perform as described on this datasheet, we will offer a refund or replacement. For full details of the Abpromise, please visit <https://www.abcam.cn/abpromise> or contact our technical team.

Terms and conditions

- Guarantee only valid for products bought direct from Abcam or one of our authorized distributors