

HRP Anti-Caspase-7 antibody [E22] ab206039

敲除验证 RabMAb

2 图像

概述

| | |
|-------|--|
| 产品名称 | HRP Anti-Caspase-7抗体[E22] |
| 描述 | HRP兔单克隆抗体[E22] to Caspase-7 |
| 宿主 | Rabbit |
| 偶联物 | HRP |
| 经测试应用 | 适用于: WB |
| 种属反应性 | 与反应: Human |
| 免疫原 | Synthetic peptide within Human Caspase-7 aa 1-100 (N terminal). The exact sequence is proprietary. Database link: P55210 |
| 阳性对照 | WB: Jurkat whole cell lysate. |
| 常规说明 | <p>This product is a recombinant monoclonal antibody, which offers several advantages including:</p> <ul style="list-style-type: none">- High batch-to-batch consistency and reproducibility- Improved sensitivity and specificity- Long-term security of supply- Animal-free production <p>For more information see here.</p> <p>Our RabMAb[®] technology is a patented hybridoma-based technology for making rabbit monoclonal antibodies. For details on our patents, please refer to RabMAb[®] patents.</p> <p>The Life Science industry has been in the grips of a reproducibility crisis for a number of years. Abcam is leading the way in addressing this with our range of recombinant monoclonal antibodies and knockout edited cell lines for gold-standard validation. Please check that this product meets your needs before purchasing.</p> <p>If you have any questions, special requirements or concerns, please send us an inquiry and/or contact our Support team ahead of purchase. Recommended alternatives for this product can be found below, along with publications, customer reviews and Q&As</p> |

性能

| | |
|------|--|
| 形式 | Liquid |
| 存放说明 | Shipped at 4°C. Store at +4°C short term (1-2 weeks). Upon delivery aliquot. Store at -20°C. |

Avoid freeze / thaw cycle. Store In the Dark.

存储溶液

pH: 7.40

Preservative: 0.1% Proclin 300 Solution

Constituents: 30% Glycerol (glycerin, glycerine), 1% BSA, PBS

纯度

Protein A purified

克隆

单克隆

克隆编号

E22

同种型

IgG

应用

The Abpromise guarantee

Abpromise™承诺保证使用ab206039于以下的经测试应用

“应用说明”部分 下显示的仅为推荐的起始稀释度;实际最佳的稀释度/浓度应由使用者检定。

| 应用 | Ab评论 | 说明 |
|----|------|--|
| WB | | 1/5000. Detects a band of approximately 36 kDa (predicted molecular weight: 34 kDa). |

靶标

功能

Involved in the activation cascade of caspases responsible for apoptosis execution. Cleaves and activates sterol regulatory element binding proteins (SREBPs). Proteolytically cleaves poly(ADP-ribose) polymerase (PARP) at a '216-Asp-Gly-217' bond. Overexpression promotes programmed cell death.

组织特异性

Highly expressed in lung, skeletal muscle, liver, kidney, spleen and heart, and moderately in testis. No expression in the brain.

序列相似性

Belongs to the peptidase C14A family.

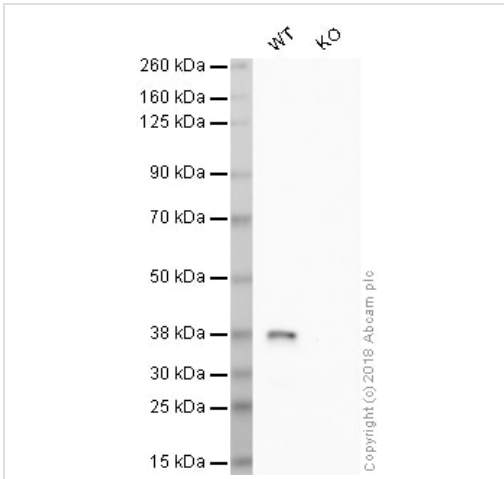
翻译后修饰

Cleavages by granzyme B or caspase-10 generate the two active subunits. Propeptide domains can also be cleaved efficiently by caspase-3. Active heterodimers between the small subunit of caspase-7 and the large subunit of caspase-3, and vice versa, also occur.

细胞定位

Cytoplasm.

图片



Western blot - HRP Anti-Caspase-7 antibody [E22]
(ab206039)

All lanes : HRP Anti-Caspase-7 antibody [E22] (ab206039) at 1/5000 dilution

Lane 1 : Wild-type HAP1 whole cell lysate

Lane 2 : CASP7 knockout HAP1 whole cell lysate

Lysates/proteins at 20 µg per lane.

Developed using the ECL technique.

Performed under reducing conditions.

Predicted band size: 34 kDa

Observed band size: 38 kDa

Exposure time: 20 minutes

ab206039 was shown to specifically react with Caspase-7 in wild-type HAP1 cells as signal was lost in CASP7 knockout cells. Wild-type and CASP7 knockout samples were subjected to SDS-PAGE. Ab206039 was incubated overnight at 4°C at 1/5000 dilution. Blots were developed with ECL technique.



Western blot - HRP Anti-Caspase-7 antibody [E22]
(ab206039)

HRP Anti-Caspase-7 antibody [E22] (ab206039) at 1/5000 dilution
+ Jurkat (Human T cell lymphoblast-like cell line) Whole Cell Lysate
at 10 µg

Developed using the ECL technique.

Performed under reducing conditions.

Predicted band size: 34 kDa

Observed band size: 36 kDa

Exposure time: 2 minutes

This blot was produced using a 4-12% Bis-tris gel under the MOPS buffer system.

The gel was run at 200V for 50 minutes before being transferred onto a Nitrocellulose membrane at 30V for 70 minutes. The membrane was then blocked for an hour using 2% Bovine Serum Albumin before being incubated with ab206039 overnight at 4°C.

Antibody binding was visualised using ECL development solution [ab133406](#).

Please note: All products are "FOR RESEARCH USE ONLY. NOT FOR USE IN DIAGNOSTIC PROCEDURES"

Our Abpromise to you: Quality guaranteed and expert technical support

- Replacement or refund for products not performing as stated on the datasheet
- Valid for 12 months from date of delivery
- Response to your inquiry within 24 hours
- We provide support in Chinese, English, French, German, Japanese and Spanish
- Extensive multi-media technical resources to help you
- We investigate all quality concerns to ensure our products perform to the highest standards

If the product does not perform as described on this datasheet, we will offer a refund or replacement. For full details of the Abpromise, please visit <https://www.abcam.cn/abpromise> or contact our technical team.

Terms and conditions

- Guarantee only valid for products bought direct from Abcam or one of our authorized distributors