


HRP Anti-beta Actin antibody [mAbcam 8226] - Loading Control ab20272

★★★★★ [17 Abreviews](#) [271 References](#) [3 图像](#)

概述

产品名称	HRP Anti-beta Actin抗体[mAbcam 8226] - Loading Control
描述	HRP小鼠单克隆抗体[mAbcam 8226] to beta Actin - Loading Control
宿主	Mouse
偶联物	HRP
经测试应用	适用于: WB
种属反应性	与反应: Mouse, Rat, Human 预测可用于: Sheep, Rabbit, Horse, Chicken, Guinea pig, Cow, Dog, Pig, Drosophila melanogaster, Monkey, African green monkey, Chinese hamster 
免疫原	Synthetic peptide. This information is proprietary to Abcam and/or its suppliers. (Peptide available as ab13772)
阳性对照	HeLa whole cell lysate, 3T3 whole cell lysate, Rat brain lysate
常规说明	<p>The Life Science industry has been in the grips of a reproducibility crisis for a number of years. Abcam is leading the way in addressing this with our range of recombinant monoclonal antibodies and knockout edited cell lines for gold-standard validation. Please check that this product meets your needs before purchasing.</p> <p>If you have any questions, special requirements or concerns, please send us an inquiry and/or contact our Support team ahead of purchase. Recommended alternatives for this product can be found below, along with publications, customer reviews and Q&As</p>

性能

形式	Liquid
存放说明	Shipped at 4°C. Store at +4°C short term (1-2 weeks). Upon delivery aliquot. Store at -20°C. Avoid freeze / thaw cycle. Store In the Dark.
存储溶液	pH: 7.40 Preservative: 0.1% Proclin 300 Solution Constituents: PBS, 1% BSA, 30% Glycerol (glycerin, glycerine)
纯度	IgG fraction
克隆	单克隆

克隆编号	mAbcam 8226
骨髓瘤	Sp2/0-Ag14
同种型	IgG1
轻链类型	kappa

应用

The Abpromise guarantee **Abpromise™**承诺保证使用ab20272于以下的经测试应用

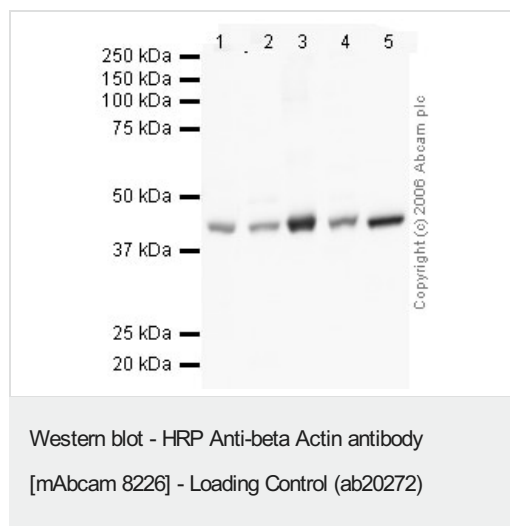
“应用说明”部分 下显示的仅为推荐的起始稀释度;实际最佳的稀释度/浓度应由使用者检定。

应用	Ab评论	说明
WB	★★★★★ (17)	1/5000. Detects a band of approximately 42 kDa (predicted molecular weight: 42 kDa).Can be blocked with Human beta Actin peptide (ab13772) . Abcam strongly recommends blocking and incubation using 5% BSA as we have found that use of 5% milk seems to drastically reduce the intensity of the signal obtained. Please refer to WB image for further details.

靶标

功能	Actins are highly conserved proteins that are involved in various types of cell motility and are ubiquitously expressed in all eukaryotic cells.
疾病相关	Defects in ACTB are a cause of dystonia juvenile-onset (DYTJ) [MIM:607371]. DYTJ is a form of dystonia with juvenile onset. Dystonia is defined by the presence of sustained involuntary muscle contraction, often leading to abnormal postures. DYTJ patients manifest progressive, generalized, dopa-unresponsive dystonia, developmental malformations and sensory hearing loss.
序列相似性	Belongs to the actin family.
翻译后修饰	ISGylated.
细胞定位	Cytoplasm > cytoskeleton. Localized in cytoplasmic mRNP granules containing untranslated mRNAs.

图片



All lanes : HRP Anti-beta Actin antibody [mAbcam 8226] - Loading Control (ab20272) at 1/5000 dilution

Lane 1 : human testis lysate

Lane 2 : human brain lysate

Lane 3 : human tonsil lysate

Lane 4 : mouse brain lysate

Lane 5 : mouse spleen lysate

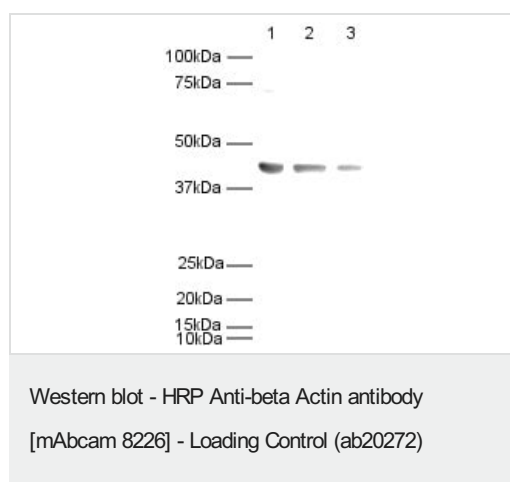
Lysates/proteins at 20 µg per lane.

Developed using the ECL technique.

Performed under reducing conditions.

Predicted band size: 42 kDa

Exposure time: 2 minutes



All lanes : HRP Anti-beta Actin antibody [mAbcam 8226] - Loading Control (ab20272) at 1/5000 dilution

Lane 1 : HeLa whole cell lysate

Lane 2 : 3T3 whole cell lysate

Lane 3 : Rat brain lysate

Lysates/proteins at 20 µg per lane.

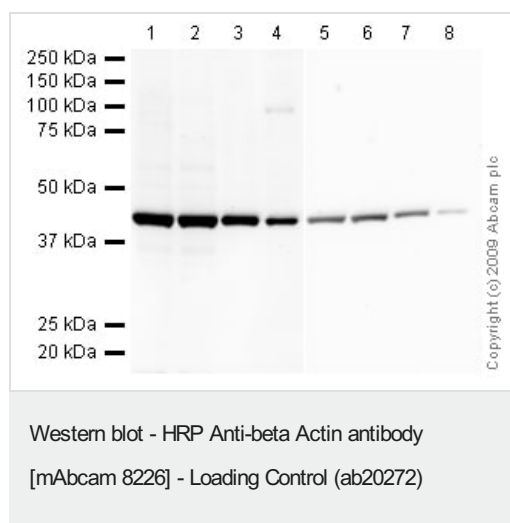
Developed using the ECL technique.

Performed under reducing conditions.

Predicted band size: 42 kDa

Observed band size: 42 kDa

Exposure time: 30 seconds



Lanes 1-4 : HRP Anti-beta Actin antibody [mAbcam 8226] - Loading Control (ab20272) at 1/5000 dilution (Blocked in 5% BSA)

Lanes 5-8 : HRP Anti-beta Actin antibody [mAbcam 8226] - Loading Control (ab20272) at 1/5000 dilution (Blocked in 5% MILK)

Lanes 1 & 5 : HeLa (Human epithelial carcinoma cell line) Whole Cell Lysate

Lanes 2 & 6 : Jurkat (Human T cell lymphoblast-like cell line) Whole Cell Lysate

Lanes 3 & 7 : NIH/3T3 whole cell lysate ([ab7179](#))

Lanes 4 & 8 : PC12 (Rat adrenal pheochromocytoma cell line) Whole Cell Lysate

Lysates/proteins at 10 µg per lane.

Developed using the ECL technique.

Performed under reducing conditions.

Predicted band size: 42 kDa

Observed band size: 42 kDa

Exposure time: 1 minute

The membrane 1-4 was blocked in 5% BSA (1 hour). The membrane 5-8 was blocked in 5% MILK (1 hour). Abcam routinely uses 5% BSA to block, however following recent customer feedback our labs investigated the effect of 5% milk blocking. We can now confirm that milk is not a suitable blocking agent for this antibody and significantly decreases the signal on the membrane.

Please note: All products are "FOR RESEARCH USE ONLY. NOT FOR USE IN DIAGNOSTIC PROCEDURES"

Our Abpromise to you: Quality guaranteed and expert technical support

- Replacement or refund for products not performing as stated on the datasheet

- Valid for 12 months from date of delivery
- Response to your inquiry within 24 hours
- We provide support in Chinese, English, French, German, Japanese and Spanish
- Extensive multi-media technical resources to help you
- We investigate all quality concerns to ensure our products perform to the highest standards

If the product does not perform as described on this datasheet, we will offer a refund or replacement. For full details of the Abpromise, please visit <https://www.abcam.cn/abpromise> or contact our technical team.

Terms and conditions

- Guarantee only valid for products bought direct from Abcam or one of our authorized distributors