

Anti-HLA G antibody [MEM-G/9] ab7758

★★★★☆ **4 Abreviews** **28 References** **1 图像**

概述

产品名称	Anti-HLA G抗体[MEM-G/9]
描述	小鼠单克隆抗体[MEM-G/9] to HLA G
宿主	Mouse
特异性	Reacts with the native form of human HLA-G on the cell surface as well as with soluble HLA-G molecule in its beta 2-microglobulin associated form. Specificity was demonstrated with cells transfected with either full-length HLA-G and HLA-G1 complementary DNA. This antibody does not compete with a tested panel of other monoclonal antibodies to HLA-G. We have data to indicate that this antibody may not cross react with Mouse. However, this has not been conclusively tested and expression levels may vary in certain cell lines/tissues.
经测试应用	适用于: Flow Cyt
种属反应性	与反应: Human 不与反应: Mouse
免疫原	Recombinant full length protein corresponding to Human HLA G.
常规说明	<p>The Life Science industry has been in the grips of a reproducibility crisis for a number of years. Abcam is leading the way in addressing this with our range of recombinant monoclonal antibodies and knockout edited cell lines for gold-standard validation. Please check that this product meets your needs before purchasing.</p> <p>If you have any questions, special requirements or concerns, please send us an inquiry and/or contact our Support team ahead of purchase. Recommended alternatives for this product can be found below, along with publications, customer reviews and Q&As</p>

性能

形式	Liquid
存放说明	Shipped at 4°C. Store at +4°C short term (1-2 weeks). Upon delivery aliquot. Store at -20°C. Avoid freeze / thaw cycle.
存储溶液	pH: 7.40 Preservative: 0.097% Sodium azide Constituent: PBS
纯度	Protein A purified
克隆	单克隆

克隆编号MEM-G/9

同种型IgG1

应用

The Abpromise guarantee **Abpromise™**承诺保证使用ab7758于以下的经测试应用

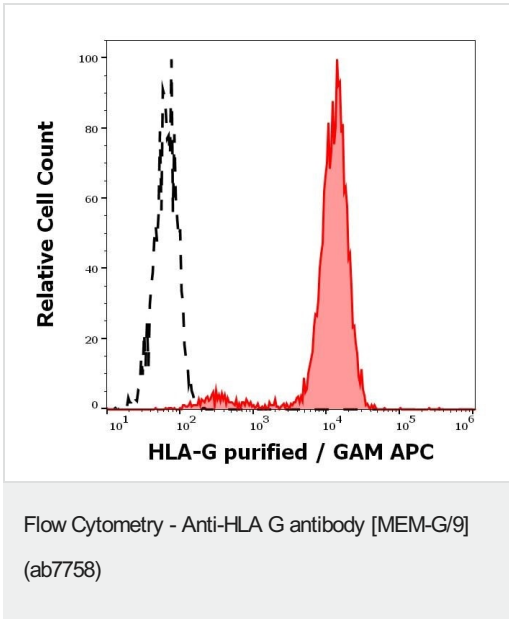
“应用说明”部分 下显示的仅为推荐的起始稀释度;实际最佳的稀释度/浓度应由使用者检定。

应用	Ab评论	说明
Flow Cyt	★★★★★ (1)	Use at an assay dependent concentration. Do not fix cells, see Menier et al. ab170190 - Mouse monoclonal IgG1, is suitable for use as an isotype control with this antibody.

靶标

功能	Involved in the presentation of foreign antigens to the immune system. Plays a role in maternal tolerance of the fetus by mediating protection from the deleterious effects of natural killer cells, cytotoxic T lymphocytes, macrophages and mononuclear cells.
组织特异性	Expressed in trophoblasts.
序列相似性	Belongs to the MHC class I family. Contains 1 Ig-like C1-type (immunoglobulin-like) domain.
细胞定位	Membrane.

图片



Flow cytometry analysis showing separation of HLA-G trasnfected LCL cells (red-filled) from K562 cells (black-dashed) stained using ab7758 (concentration in sample 0.3 µg/ml, GAM APC).

Please note: All products are "FOR RESEARCH USE ONLY. NOT FOR USE IN DIAGNOSTIC PROCEDURES"

Our Abpromise to you: Quality guaranteed and expert technical support

- Replacement or refund for products not performing as stated on the datasheet
- Valid for 12 months from date of delivery
- Response to your inquiry within 24 hours

- We provide support in Chinese, English, French, German, Japanese and Spanish
- Extensive multi-media technical resources to help you
- We investigate all quality concerns to ensure our products perform to the highest standards

If the product does not perform as described on this datasheet, we will offer a refund or replacement. For full details of the Abpromise, please visit <https://www.abcam.cn/abpromise> or contact our technical team.

Terms and conditions

- Guarantee only valid for products bought direct from Abcam or one of our authorized distributors