

Anti-HLA G antibody [5A6G7] ab76869

★★★★★ [1 Abreviews](#) [9 References](#) [1 图像](#)

概述

产品名称	Anti-HLA G抗体[5A6G7]
描述	小鼠单克隆抗体[5A6G7] to HLA G
宿主	Mouse
经测试应用	适用于: WB
免疫原	Synthetic peptide corresponding to HLA G (C terminal) conjugated to ovalbumin. Amino acid sequence (22-mer) of soluble HLA-G5 and HLA-G6 protein coupled to ovalbumin
阳性对照	WB: M8 cell line transfected with HLA-G5 and M8 cell line transfected with HLA-G6.
常规说明	<p>ab76869 allows discrimination between soluble HLA-G protein yielded by shedding from membrane-bound HLA-G forms that do not contain the intron 4-encoded epitope and soluble HLA-G5/HLA-G6 produced from intron 4-retaining alternatively spliced mRNAs.</p> <p>The Life Science industry has been in the grips of a reproducibility crisis for a number of years. Abcam is leading the way in addressing this with our range of recombinant monoclonal antibodies and knockout edited cell lines for gold-standard validation. Please check that this product meets your needs before purchasing.</p> <p>If you have any questions, special requirements or concerns, please send us an inquiry and/or contact our Support team ahead of purchase. Recommended alternatives for this product can be found below, along with publications, customer reviews and Q&As</p>

性能

形式	Liquid
存放说明	Shipped at 4°C. Upon delivery aliquot and store at -20°C. Avoid freeze / thaw cycles.
存储溶液	pH: 7.40 Preservative: 0.097% Sodium azide Constituent: PBS
纯度	Protein A purified
纯化说明	Purified from TCS. Purity >95% by SDS-PAGE.
Primary antibody说明	ab76869 allows discrimination between soluble HLA-G protein yielded by shedding from membrane-bound HLA-G forms that do not contain the intron 4-encoded epitope and soluble HLA-G5/HLA-G6 produced from intron 4-retaining alternatively spliced mRNAs.

克隆	单克隆
克隆编号	5A6G7
同种型	IgG1

应用

The Abpromise guarantee **Abpromise™**承诺保证使用ab76869于以下的经测试应用

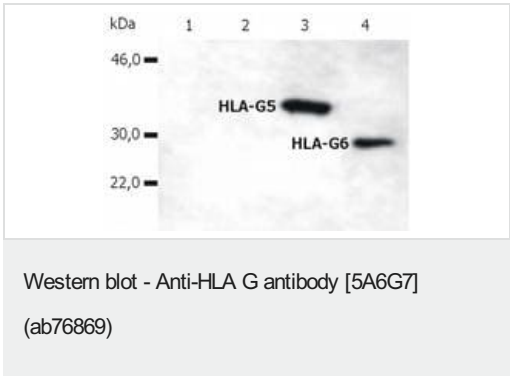
“应用说明”部分 下显示的仅为推荐的起始稀释度;实际最佳的稀释度/浓度应由使用者检定。

应用	Ab评论	说明
WB		Use at an assay dependent concentration. Predicted molecular weight: 38 kDa.

靶标

功能	Involved in the presentation of foreign antigens to the immune system. Plays a role in maternal tolerance of the fetus by mediating protection from the deleterious effects of natural killer cells, cytotoxic T lymphocytes, macrophages and mononuclear cells.
组织特异性	Expressed in trophoblasts.
序列相似性	Belongs to the MHC class I family. Contains 1 Ig-like C1-type (immunoglobulin-like) domain.
细胞定位	Membrane.

图片



All lanes : Anti-HLA G antibody [5A6G7] (ab76869)

Lane 1 : M8 cell line transfected with empty vector

Lane 2 : M8 cell line transfected with HLA G1

Lane 3 : M8 cell line transfected with HLA G5

Lane 4 : M8 cell line transfected with HLA G6

Predicted band size: 38 kDa

Observed band size: 30,38 kDa

Please note: All products are "FOR RESEARCH USE ONLY. NOT FOR USE IN DIAGNOSTIC PROCEDURES"

Our Abpromise to you: Quality guaranteed and expert technical support

- Replacement or refund for products not performing as stated on the datasheet
- Valid for 12 months from date of delivery
- Response to your inquiry within 24 hours

- We provide support in Chinese, English, French, German, Japanese and Spanish
- Extensive multi-media technical resources to help you
- We investigate all quality concerns to ensure our products perform to the highest standards

If the product does not perform as described on this datasheet, we will offer a refund or replacement. For full details of the Abpromise, please visit <https://www.abcam.cn/abpromise> or contact our technical team.

Terms and conditions

- Guarantee only valid for products bought direct from Abcam or one of our authorized distributors