

Anti-Hexokinase II antibody [EPR20839] ab209847






[2 Abreviews](#)
[74 References](#)
[12 图像](#)

概述

产品名称	Anti-Hexokinase II抗体[EPR20839]
描述	兔单克隆抗体[EPR20839] to Hexokinase II
宿主	Rabbit
特异性	Not recommended for rat and mouse tissues in IHC.
经测试应用	适用于: WB, IHC-P, ICC/IF, IP, Flow Cyt (Intra)
种属反应性	与反应: Mouse, Rat, Human
免疫原	Recombinant fragment. This information is proprietary to Abcam and/or its suppliers.
阳性对照	WB: Hexokinase II recombinant protein (aa16-458); HEK-293, HCT116, HeLa, SH-SY5Y and NIH/3T3 whole cell lysates; HKDC1 and Hexokinase I-knockdown HeLa cell lysates; Rat testis and muscle lysates; Human testis, colon and fetal heart lysates; Mouse muscle lysate. IHC-P: Human heart and pancreatic adenocarcinoma tissues. ICC/IF: HeLa and NIH/3T3 cells. Flow Cyt (intra): HeLa cells. IP: HeLa whole cell lysate.
常规说明	<p>This product is a recombinant monoclonal antibody, which offers several advantages including:</p> <ul style="list-style-type: none"> - High batch-to-batch consistency and reproducibility - Improved sensitivity and specificity - Long-term security of supply - Animal-free production <p>For more information see here.</p> <p>Our RabMAB[®] technology is a patented hybridoma-based technology for making rabbit monoclonal antibodies. For details on our patents, please refer to RabMAB[®] patents.</p>

性能

形式	Liquid
存放说明	Shipped at 4°C. Store at +4°C short term (1-2 weeks). Upon delivery aliquot. Store at -20°C long term. Avoid freeze / thaw cycle.
存储溶液	<p>pH: 7.2</p> <p>Preservative: 0.01% Sodium azide</p> <p>Constituents: PBS, 40% Glycerol, 0.05% BSA</p>
纯度	Protein A purified

克隆	单克隆
克隆编号	EPR20839
同种型	IgG

应用

The Abpromise guarantee **Abpromise™**承诺保证使用ab209847于以下的经测试应用

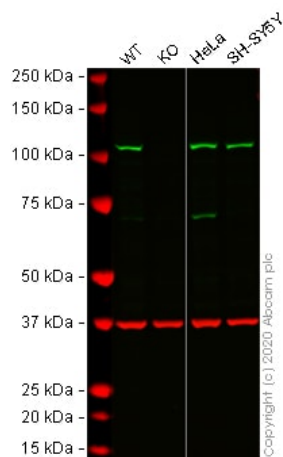
“应用说明”部分 下显示的仅为推荐的起始稀释度;实际最佳的稀释度/浓度应由使用者检定。

应用	Ab评论	说明
WB	★★★★★ (2)	1/1000. Detects a band of approximately 102 kDa (predicted molecular weight: 102 kDa).
IHC-P		1/500. Perform heat mediated antigen retrieval with Tris/EDTA buffer pH 9.0 before commencing with IHC staining protocol. Not recommended for rat and mouse tissues.
ICC/IF		1/100.
IP		1/30.
Flow Cyt (Intra)		1/60.

靶标

组织特异性	Predominant hexokinase isozyme expressed in insulin-responsive tissues such as skeletal muscle.
通路	Carbohydrate metabolism; hexose metabolism.
序列相似性	Belongs to the hexokinase family. Contains 2 hexokinase domains.
结构域	The N- and C-terminal halves of this hexokinase show extensive sequence similarity to each other. The catalytic activity is associated with the C-terminus while regulatory function is associated with the N-terminus. Each domain can bind a single glucose and Gluc-6-P molecule.
细胞定位	Mitochondrion outer membrane. Its hydrophobic N-terminal sequence may be involved in membrane binding.

图片



Western blot - Anti-Hexokinase II antibody
[EPR20839] (ab209847)

All lanes : Anti-Hexokinase II antibody [EPR20839] (ab209847) at 1/1000 dilution

Lane 1 : Wild-type HCT116 cell lysate

Lane 2 : HK2 knockout HCT116 cell lysate

Lane 3 : HeLa cell lysate

Lane 4 : SH-SY5Y cell lysate

Lysates/proteins at 20 µg per lane.

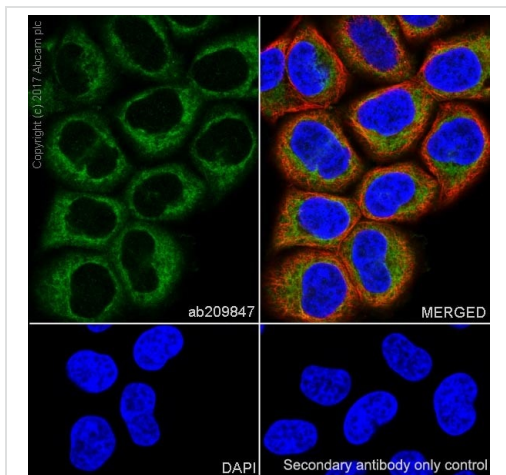
Performed under reducing conditions.

Predicted band size: 102 kDa

Observed band size: 105 kDa

Lanes 1 -4: Merged signal (red and green). Green - ab209847 observed at 105 kDa. Red - loading control [ab8245](#) (Mouse anti-GAPDH antibody [6C5]) observed at 37kDa.

ab209847 was shown to react with Anti-Hexokinase II in HCT 116 wild-type cells in western blot with loss of signal observed in HK2 knockout cell line [ab273721](#) (HK2 knockout cell lysate [ab275250](#)). HCT 116 wild-type and HK2 knockout cell lysates were subjected to SDS-PAGE. Membranes were blocked in 3% milk in TBS-T (0.1% Tween®) before incubation with ab209847 and [ab8245](#) (Mouse anti-GAPDH antibody [6C5]) overnight at 4°C at a 1 in 1000 dilution and a 1 in 20000 dilution respectively. Blots were incubated with Goat anti-Rabbit IgG H&L (IRDye® 800CW) preabsorbed ([ab216773](#)) and Goat anti-Mouse IgG H&L (IRDye® 680RD) preabsorbed ([ab216776](#)) secondary antibodies at 1 in 20000 dilution for 1 hour at room temperature before imaging.



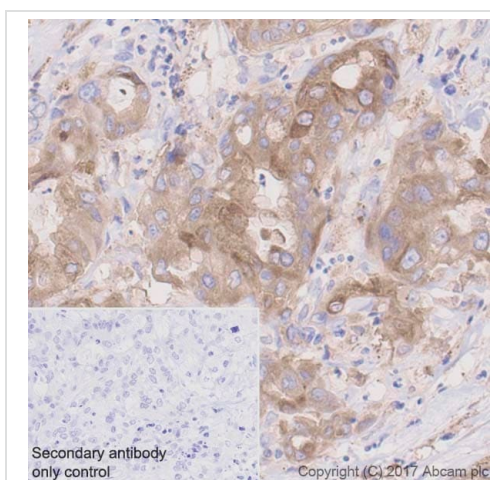
Immunocytochemistry/ Immunofluorescence - Anti-Hexokinase II antibody [EPR20839] (ab209847)

Immunofluorescent analysis of 4% paraformaldehyde-fixed, 0.1% Triton X-100 permeabilized HeLa (human cervix adenocarcinoma epithelial cell) cells labeling Hexokinase II with ab209847 at 1/100 dilution, followed by Goat Anti-Rabbit IgG H&L (Alexa Fluor® 488) (**ab150077**) secondary antibody at 1/1000 dilution (green).

Cytoplasmic staining in HeLa cells.

The nuclear counter stain is DAPI (blue). Tubulin is detected with Anti-alpha Tubulin antibody [DM1A] - Microtubule Marker (Alexa Fluor® 594) (**ab195889**) (red) at 1/200 dilution.

Secondary antibody only control: Used PBS instead of primary antibody, secondary antibody is Goat Anti-Rabbit IgG H&L (Alexa Fluor® 488) (**ab150077**) secondary antibody at 1/1000 dilution.



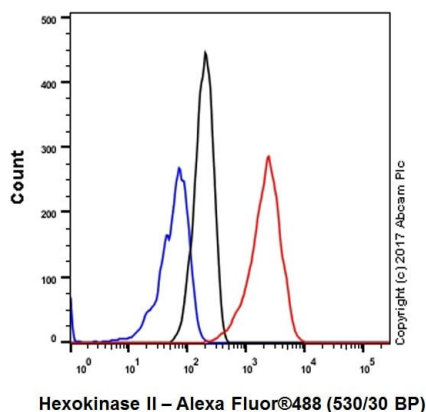
Immunohistochemistry (Formalin/PFA-fixed paraffin-embedded sections) - Anti-Hexokinase II antibody [EPR20839] (ab209847)

Immunohistochemical analysis of paraffin-embedded human pancreatic adenocarcinoma tissue labeling Hexokinase II with ab209847 at 1/500 dilution, followed by Goat Anti-Rabbit IgG H&L (HRP) Ready to use. Strong cytoplasmic staining in human pancreatic adenocarcinoma (PMID: 26137268) is observed.

Counter stained with Hematoxylin.

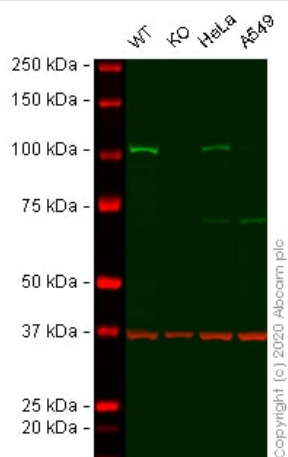
Secondary antibody only control: Used PBS instead of primary antibody, secondary antibody is Goat Anti-Rabbit IgG H&L (HRP) Ready to use.

Perform heat mediated antigen retrieval with Tris/EDTA buffer pH 9.0 before commencing with IHC staining protocol.



Flow Cytometry (Intracellular) - Anti-Hexokinase II antibody [EPR20839] (ab209847)

Intracellular flow cytometric analysis of 4% paraformaldehyde-fixed, 90% methanol-permeabilized HeLa (human epithelial cell line from cervix adenocarcinoma) cell line labeling Hexokinase II with ab209847 at 1/60 dilution (red) compared with a Rabbit IgG, monoclonal [EPR25A] - Isotype Control ([ab172730](#)) (black) and an unlabeled control (cells without incubation with primary antibody and secondary antibody) (blue). Goat Anti-Rabbit IgG H&L (Alexa Fluor® 488) ([ab150077](#)) at 1/2000 dilution was used as the secondary antibody.



Western blot - Anti-Hexokinase II antibody [EPR20839] (ab209847)

All lanes : Anti-Hexokinase II antibody [EPR20839] (ab209847) at 1/1000 dilution

Lane 1 : Wild-type HEK-293 (Human epithelial cell line from embryonic kidney) whole cell lysate

Lane 2 : HK2 knockout HEK-293 (Human epithelial cell line from embryonic kidney) whole cell lysate

Lane 3 : HeLa (Human epithelial cell line from cervix adenocarcinoma) whole cell lysate

Lane 4 : A549 (Human lung carcinoma cell line) whole cell lysate

Lysates/proteins at 20 µg per lane.

Performed under reducing conditions.

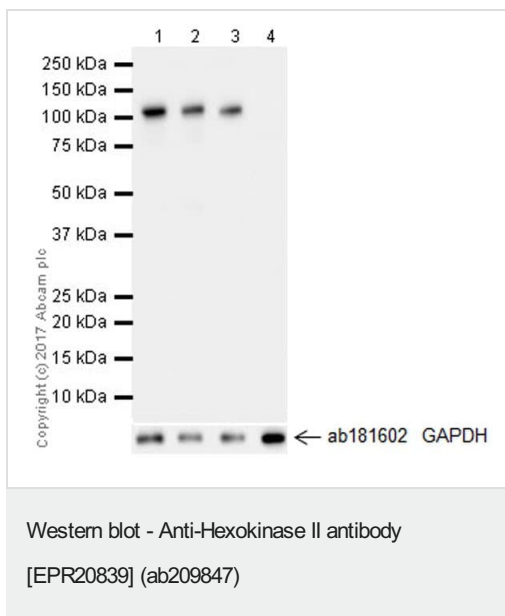
Predicted band size: 102 kDa

Observed band size: 110 kDa

Lanes 1 - 4: Merged signal (red and green). Green - ab209847

observed at 110 kDa. Red - loading control **ab8245** (Mouse anti-GAPDH antibody [6C5]) observed at 37kDa.

ab209847 was shown to react with Hexokinase II in wild-type HEK-293 cells in western blot with loss of signal observed in HK2 knockout sample. Wild-type and HK2 knockout HEK-293 cell lysates were subjected to SDS-PAGE. Membranes were blocked in 3% milk in TBS-T (0.1% Tween®) before incubation with ab209847 and **ab8245** (Mouse anti-GAPDH antibody [6C5]) overnight at 4°C at a 1 in 1000 Dilution and a 1 in 20000 dilution respectively. Blots were incubated with Goat anti-Rabbit IgG H&L (IRDye® 800CW) preabsorbed (**ab216773**) and Goat anti-Mouse IgG H&L (IRDye® 680RD) preabsorbed (**ab216776**) secondary antibodies at 1 in 20000 dilution for 1 hour at room temperature before imaging.



All lanes : Anti-Hexokinase II antibody [EPR20839] (ab209847) at 1/1000 dilution

Lane 1 : HeLa (human epithelial cell line from cervix adenocarcinoma), whole cell lysate

Lane 2 : HKDC1-knockdown HeLa (human epithelial cell line from cervix adenocarcinoma) cell lysate

Lane 3 : Hexokinase I-knockdown HeLa (human epithelial cell line from cervix adenocarcinoma) cell lysate

Lane 4 : Hexokinase II-knockdown HeLa (human epithelial cell line from cervix adenocarcinoma) cell lysate

Lysates/proteins at 10 µg per lane.

Secondary

All lanes : Goat Anti-Rabbit IgG H&L (HRP) (**ab97051**) at 1/100000 dilution

Developed using the ECL technique.

Predicted band size: 102 kDa

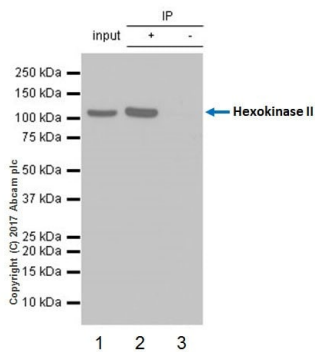
Observed band size: 102 kDa

Exposure time: 41 seconds

Blocking/Dilution buffer: 5% NFDM/TBST.

The blot was developed on a BIO-RAD® ChemiDoc™ MP

instrument.



Immunoprecipitation - Anti-Hexokinase II antibody
[EPR20839] (ab209847)

Hexokinase II was immunoprecipitated from 0.35 mg HeLa (human epithelial cell line from cervix adenocarcinoma) whole cell lysate with ab209847 at 1/30 dilution. Western blot was performed from the immunoprecipitate using ab209847 at 1/1000 dilution. VeriBlot for IP Detection Reagent (HRP) ([ab131366](#)), was used for detection at 1/10000 dilution.

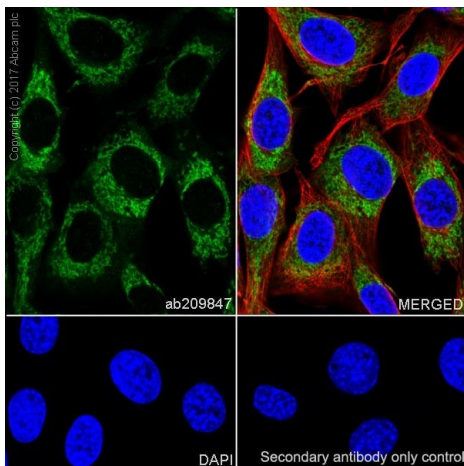
Lane 1: HeLa whole cell lysate 10 µg (Input).

Lane 2: ab209847 IP in HeLa whole cell lysate.

Lane 3: Rabbit monoclonal IgG ([ab172730](#)) instead of ab209847 in HeLa whole cell lysate.

Exposure time: 30 seconds.

Blocking and dilution buffer and concentration: 5% NFDm/TBST.

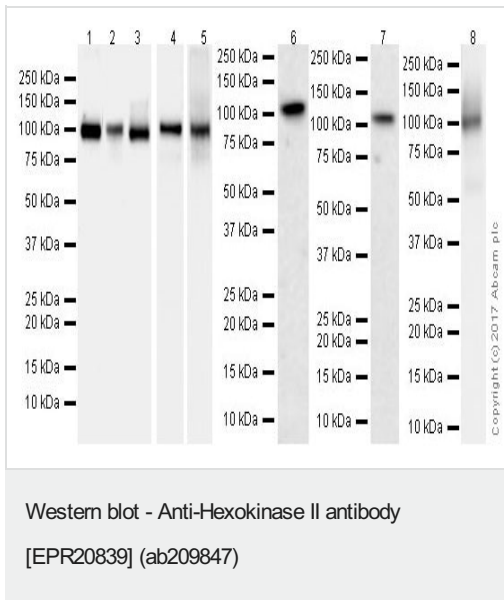


Immunocytochemistry/ Immunofluorescence - Anti-Hexokinase II antibody [EPR20839] (ab209847)

Immunofluorescent analysis of 4% paraformaldehyde-fixed, 0.1% Triton X-100 permeabilized NIH/3T3 (mouse embryonic fibroblast cell line) cells labeling Hexokinase II with ab209847 at 1/100 dilution, followed by Goat Anti-Rabbit IgG H&L (Alexa Fluor® 488) ([ab150077](#)) secondary antibody at 1/1000 dilution (green). Cytoplasmic staining in NIH/3T3 cells.

The nuclear counter stain is DAPI (blue). Tubulin is detected with Anti-alpha Tubulin antibody [DM1A] - Microtubule Marker (Alexa Fluor® 594) ([ab195889](#)) (red) at 1/200 dilution.

Secondary antibody only control: Used PBS instead of primary antibody, secondary antibody is Goat Anti-Rabbit IgG H&L (Alexa Fluor® 488) ([ab150077](#)) secondary antibody at 1/1000 dilution.



All lanes : Anti-Hexokinase II antibody [EPR20839] (ab209847) at 1/1000 dilution

Lane 1 : Rat testis lysate at 20 µg

Lane 2 : Rat muscle lysate at 20 µg

Lane 3 : SH-SY5Y (human neuroblastoma cell line from bone marrow), whole cell lysate at 20 µg

Lane 4 : Human testis lysate at 20 µg

Lane 5 : Mouse muscle lysate at 20 µg

Lane 6 : Human colon lysate at 10 µg

Lane 7 : Human fetal heart lysate at 10 µg

Lane 8 : NIH/3T3 (mouse embryonic fibroblast cell line), whole cell lysate at 10 µg

Secondary

Lanes 1-5 & 8 : Goat Anti-Rabbit IgG H&L (HRP) ([ab97051](#)) at 1/100000 dilution

Lanes 6-7 : VeriBlot for IP Detection Reagent (HRP) ([ab131366](#)) at 1/4000 dilution

Developed using the ECL technique.

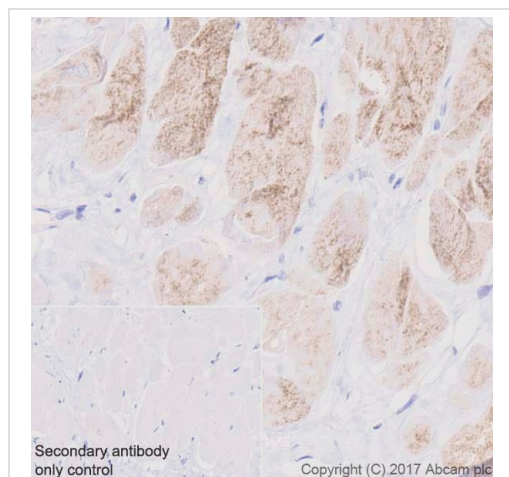
Predicted band size: 102 kDa

Observed band size: 102 kDa

Exposure times: Lanes 1-3,6,7: 3 minutes; Lanes 4,5,8: 58 seconds.

Blocking/Dilution buffer: 5% NFDM/TBST.

The blot was developed on a BIO-RAD® ChemiDoc™ MP instrument.

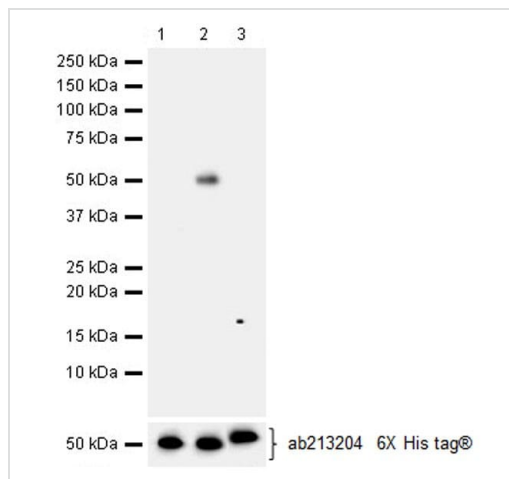


Immunohistochemistry (Formalin/PFA-fixed paraffin-embedded sections) - Anti-Hexokinase II antibody [EPR20839] (ab209847)

Immunohistochemical analysis of paraffin-embedded human heart tissue labeling Hexokinase II with ab209847 at 1/500 dilution, followed by Goat Anti-Rabbit IgG H&L (HRP) Ready to use. Granularly cytoplasmic staining in human heart (PMID: 4058069; PMID: 26722360) is observed. Counter stained with Hematoxylin.

Secondary antibody only control: Used PBS instead of primary antibody, secondary antibody is Goat Anti-Rabbit IgG H&L (HRP) Ready to use.

Perform heat mediated antigen retrieval with Tris/EDTA buffer pH 9.0 before commencing with IHC staining protocol.



Western blot - Anti-Hexokinase II antibody [EPR20839] (ab209847)

All lanes : Anti-Hexokinase II antibody [EPR20839] (ab209847) at 1/10000 dilution

Lane 1 : HKDC1 recombinant protein (aa16-458)

Lane 2 : Hexokinase II recombinant protein (aa16-458)

Lane 3 : Hexokinase I recombinant protein (aa16-458)

Lysates/proteins at 0.01 µg per lane.

Secondary

All lanes : Goat Anti-Rabbit IgG H&L (HRP) (**ab97051**) at 1/100000 dilution

Developed using the ECL technique.

Predicted band size: 102 kDa


Observed band size: 50 kDa

Exposure time: 3 minutes

Blocking/dilution buffer and concentration: 5% NFDm/TBST.

The blot was developed on a BIO-RAD® ChemiDoc™ MP instrument.

Why choose a recombinant antibody?



- Research with confidence**
Consistent and reproducible results
- Long-term and scalable supply**
Recombinant technology
- Success from the first experiment**
Confirmed specificity
- Ethical standards compliant**
Animal-free production

Anti-Hexokinase II antibody [EPR20839] (ab209847)

Please note: All products are "FOR RESEARCH USE ONLY. NOT FOR USE IN DIAGNOSTIC PROCEDURES"

Our Abpromise to you: Quality guaranteed and expert technical support

- Replacement or refund for products not performing as stated on the datasheet
- Valid for 12 months from date of delivery
- Response to your inquiry within 24 hours
- We provide support in Chinese, English, French, German, Japanese and Spanish
- Extensive multi-media technical resources to help you
- We investigate all quality concerns to ensure our products perform to the highest standards

If the product does not perform as described on this datasheet, we will offer a refund or replacement. For full details of the Abpromise, please visit <https://www.abcam.cn/abpromise> or contact our technical team.

Terms and conditions

- Guarantee only valid for products bought direct from Abcam or one of our authorized distributors