

Anti-Hes1 antibody [OTI2D2] ab119776

★★★★★ [2 Abreviews](#) [13 References](#) [6 图像](#)

概述

产品名称	Anti-Hes1抗体[OTI2D2]
描述	小鼠单克隆抗体[OTI2D2] to Hes1
宿主	Mouse
经测试应用	适用于: Flow Cyt (Intra), WB, IHC-P, ICC/IF
种属反应性	与反应: Human, Recombinant fragment
免疫原	Recombinant full length Human Hes1 produced in HEK293T cells (NP_005515).
阳性对照	WB: HEK293T cell lysate transfected with pCMV6-ENTRY Hes1 cDNA. ICC/IF: MCF7 cell lysates; COS7 cells transiently transfected by pCMV6-ENTRY Hes1 cDNA. Flow Cyt (Intra): Jurkat cells. IHC-P: Human thyroid, thyroid carcinoma and bladder carcinoma tissues.
常规说明	<p>Dilute in PBS (pH7.3) before use.</p> <p>This product was changed from ascites to tissue culture supernatant on the 4th of June 2019. Please note that the dilutions may need to be adjusted accordingly. If you have any questions, please do not hesitate to contact our scientific support team.</p> <p>The Life Science industry has been in the grips of a reproducibility crisis for a number of years. Abcam is leading the way in addressing this with our range of recombinant monoclonal antibodies and knockout edited cell lines for gold-standard validation. Please check that this product meets your needs before purchasing.</p> <p>If you have any questions, special requirements or concerns, please send us an inquiry and/or contact our Support team ahead of purchase. Recommended alternatives for this product can be found below, along with publications, customer reviews and Q&As</p>

性能

形式	Liquid
存放说明	Shipped at 4°C. Upon delivery aliquot and store at -20°C. Avoid repeated freeze / thaw cycles.
存储溶液	<p>pH: 7.30</p> <p>Preservative: 0.02% Sodium azide</p> <p>Constituents: PBS, 1% BSA, 50% Glycerol</p>
纯度	Tissue culture supernatant
纯化说明	Purified from TCS.

克隆	单克隆
克隆编号	OT12D2
同种型	IgG1

应用

The Abpromise guarantee

Abpromise™承诺保证使用ab119776于以下的经测试应用

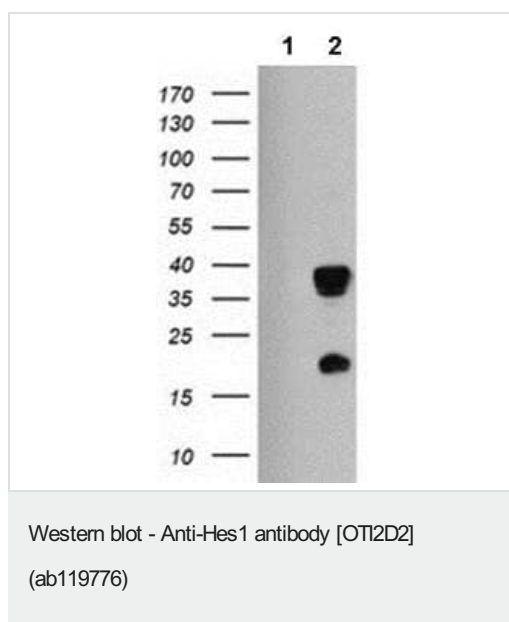
“应用说明”部分 下显示的仅为推荐的起始稀释度;实际最佳的稀释度/浓度应由使用者检定。

应用	Ab评论	说明
Flow Cyt (Intra)		1/100. ab170190 - Mouse monoclonal IgG1, is suitable for use as an isotype control with this antibody.
WB		Use at an assay dependent concentration. Predicted molecular weight: 30 kDa.
IHC-P		Use at an assay dependent concentration.
ICC/IF	★★★★★ (2)	Use at an assay dependent concentration.

靶标

功能	Transcriptional repressor of genes that require a bHLH protein for their transcription. May act as a negative regulator of myogenesis by inhibiting the functions of MYOD1 and ASH1. Binds DNA on N-box motifs: 5'-CACNAG-3' with high affinity and on E-box motifs: 5'-CANNTG-3' with low affinity.
序列相似性	Contains 1 basic helix-loop-helix (bHLH) domain. Contains 1 Orange domain.
结构域	Has a particular type of basic domain (presence of a helix-interrupting proline) that binds to the N-box (CACNAG), rather than the canonical E-box (CANNTG). The C-terminal WRPW motif is a transcriptional repression domain necessary for the interaction with Groucho/TLE family members, transcriptional corepressors recruited to specific target DNA by Hairy-related proteins. The bHLH, as well as cooperation between the central Orange domain and the C-terminal WRPW motif, is required for transcriptional repressor activity.
细胞定位	Nucleus.

图片



All lanes : Anti-Hes1 antibody [OT12D2] (ab119776) at 1/2000 dilution

Lane 1 : HEK293T cell lysate transfected with pCMV6-ENTRY control cDNA

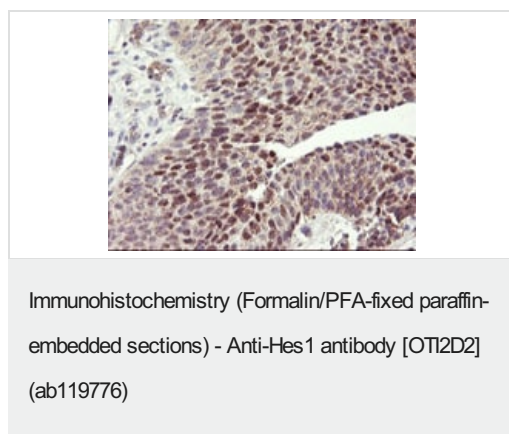
Lane 2 : HEK293T cell lysate transfected with pCMV6-ENTRY Hes1 cDNA

Lysates/proteins at 5 µg per lane.

Predicted band size: 30 kDa

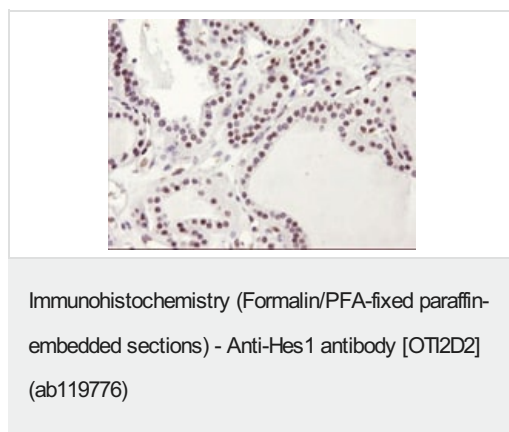
HEK293T cell lysates were generated from transient transfection of the cDNA clone (RC211709)

This image was generated using the ascites version of the product.



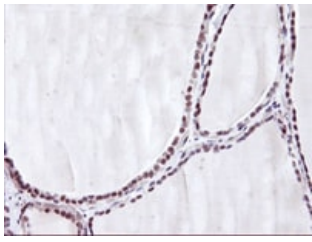
ab119776, at 1/150 dilution, staining Hes1 in paraffin-embedded Human bladder carcinoma tissue by Immunohistochemistry.

This image was generated using the ascites version of the product.



ab119776, at 1/150 dilution, staining Hes1 in paraffin-embedded Human thyroid carcinoma tissue by Immunohistochemistry.

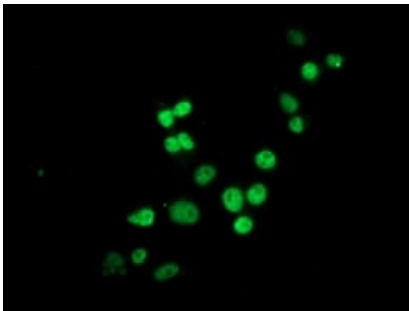
This image was generated using the ascites version of the product.



Immunohistochemistry (Formalin/PFA-fixed paraffin-embedded sections) - Anti-Hes1 antibody [OT12D2] (ab119776)

ab119776, at 1/150 dilution, staining Hes1 in paraffin-embedded Human thyroid tissue by Immunohistochemistry.

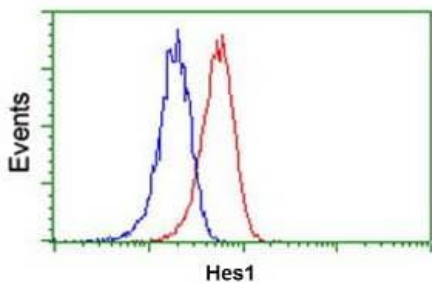
This image was generated using the ascites version of the product.



Immunocytochemistry/ Immunofluorescence - Anti-Hes1 antibody [OT12D2] (ab119776)

ab119776, at 1/100 dilution, staining Hes1 in COS7 cells transiently transfected with pCMV6-ENTRY Hes1 cDNA by Immunofluorescence.

This image was generated using the ascites version of the product.



Flow Cytometry (Intracellular) - Anti-Hes1 antibody [OT12D2] (ab119776)

ab119776, at 1/100 dilution, staining Hes1 (red) in Jurkat cells, compared to a nonspecific negative control antibody, (blue) by Flow cytometry (Intracellular).

This image was generated using the ascites version of the product.

Please note: All products are "FOR RESEARCH USE ONLY. NOT FOR USE IN DIAGNOSTIC PROCEDURES"

Our Abpromise to you: Quality guaranteed and expert technical support

- Replacement or refund for products not performing as stated on the datasheet
- Valid for 12 months from date of delivery
- Response to your inquiry within 24 hours
- We provide support in Chinese, English, French, German, Japanese and Spanish
- Extensive multi-media technical resources to help you

- We investigate all quality concerns to ensure our products perform to the highest standards

If the product does not perform as described on this datasheet, we will offer a refund or replacement. For full details of the Abpromise, please visit <https://www.abcam.cn/abpromise> or contact our technical team.

Terms and conditions

- Guarantee only valid for products bought direct from Abcam or one of our authorized distributors