

Anti-Heparanase 1 antibody [EPR22365-230] ab254254

敲除验证
重组
RabMAb

[4 References](#)
[4 图像](#)

概述

产品名称	Anti-Heparanase 1抗体[EPR22365-230]
描述	兔单克隆抗体[EPR22365-230] to Heparanase 1
宿主	Rabbit
经测试应用	适用于: WB 不适用于: ICC/IF, IHC-P or IP
种属反应性	与反应: Human
免疫原	Recombinant fragment. This information is proprietary to Abcam and/or its suppliers.
阳性对照	WB: HeLa and Capan-1 whole cell lysates; Recombinant human active heparinase 1 protein (aa36-109 & 158-543).
常规说明	<p>This product is a recombinant monoclonal antibody, which offers several advantages including:</p> <ul style="list-style-type: none"> - High batch-to-batch consistency and reproducibility - Improved sensitivity and specificity - Long-term security of supply - Animal-free production <p>For more information see here.</p> <p>Our RabMAb[®] technology is a patented hybridoma-based technology for making rabbit monoclonal antibodies. For details on our patents, please refer to RabMAb[®] patents.</p>

性能

形式	Liquid
存放说明	Shipped at 4°C. Store at +4°C short term (1-2 weeks). Upon delivery aliquot. Store at -20°C long term. Avoid freeze / thaw cycle.
存储溶液	pH: 7.2 Preservative: 0.01% Sodium azide Constituents: 40% Glycerol (glycerin, glycerine), 0.05% BSA, PBS
纯度	Protein A purified
克隆	单克隆
克隆编号	EPR22365-230

应用

The Abpromise guarantee **Abpromise™**承诺保证使用ab254254于以下的经测试应用

“应用说明”部分下显示的仅为推荐的起始稀释度;实际最佳的稀释度/浓度应由使用者检定。

应用	Ab评论	说明
WB		1/1000. Detects a band of approximately 50, 65 kDa (predicted molecular weight: 61 kDa).

应用说明

Is unsuitable for ICC/IF, IHC-P or IP.

靶标

功能

Endoglycosidase which is a cell surface and extracellular matrix-degrading enzyme. Cleaves heparan sulfate proteoglycans (HSPGs) into heparan sulfate side chains and core proteoglycans. Also implicated in the extravasation of leukocytes and tumor cell lines. Due to its contribution to metastasis and angiogenesis, it is considered to be a potential target for anti-cancer therapies.

组织特异性

Highly expressed in placenta and spleen and weakly expressed in lymph node, thymus, peripheral blood leukocytes, bone marrow, endothelial cells, fetal liver and tumor tissues.

序列相似性

Belongs to the glycosyl hydrolase 79 family.

翻译后修饰

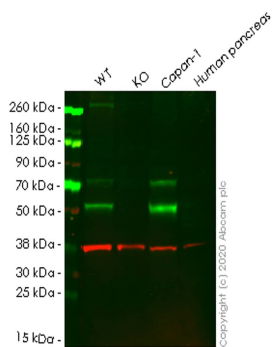
Proteolytically processed. The cleavage of the 65 kDa form leads to the generation of a linker peptide, 8 kDa and 50 kDa product. The active form, the 8/50 kDa heterodimer, is resistant to degradation. Complete removal of the linker peptide appears to be a prerequisite to the complete activation of the enzyme.

N-glycosylated. Glycosylation of the 50 kDa subunit appears to be essential for its solubility.

细胞定位

Lysosome membrane. Secreted. Secreted, internalised and transferred to late endosomes/lysosomes as a proheparanase. In lysosomes, it is processed into the active form, the heparanase. The uptake or internalisation of proheparanase is mediated by HSPGs. Heparin appears to be a competitor and retain proheparanase in the extracellular medium.

图片



Western blot - Anti-Heparanase 1 antibody [EPR22365-230] (ab254254)

All lanes : Anti-Heparanase 1 antibody [EPR22365-230] (ab254254) at 1/1000 dilution

Lane 1 : Wild-type HeLa cell lysate

Lane 2 : HPSE knockout HeLa cell lysate

Lane 3 : Capan-1 cell lysate

Lane 4 : Human pancreas tissue lysate

Lysates/proteins at 20 µg per lane.

Secondary

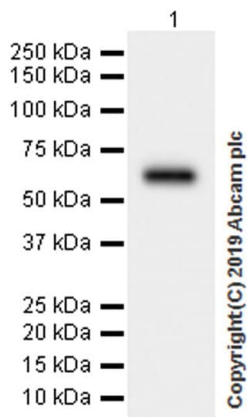
All lanes : Goat anti-Rabbit IgG H&L (IRDye® 800CW) preadsorbed (**ab216773**) at 1/10000 dilution

Predicted band size: 61 kDa

Observed band size: 52,65 kDa

Lanes 1-4: Merged signal (red and green). Green - ab254254 observed at 52,65 kDa. Red - loading control **ab8245** observed at 36 kDa.

ab254254 Anti-Heparanase 1 antibody [EPR22365-230] was shown to specifically react with Heparanase 1 in wild-type HeLa cells. Loss of signal was observed when knockout cell line **ab265413** (knockout cell lysate **ab258456**) was used. Wild-type and Heparanase 1 knockout samples were subjected to SDS-PAGE. ab254254 and Anti-GAPDH antibody [6C5] - Loading Control (**ab8245**) were incubated overnight at 4°C at 1 in 1000 dilution and 1 in 20000 dilution respectively. Blots were developed with Goat anti-Rabbit IgG H&L (IRDye® 800CW) preadsorbed (**ab216773**) and Goat anti-Mouse IgG H&L (IRDye® 680RD) preadsorbed (**ab216776**) secondary antibodies at 1 in 20000 dilution for 1 hour at room temperature before imaging.



Western blot - Anti-Heparanase 1 antibody
[EPR22365-230] (ab254254)

Anti-Heparanase 1 antibody [EPR22365-230] (ab254254) at 1/1000 dilution + Recombinant human active heparinase 1 protein (aa36-109 & 158-543, expressed in CHO cells), 20 ng

Secondary

Goat Anti-Rabbit IgG H&L (HRP) ([ab97051](#)) at 1/100000 dilution

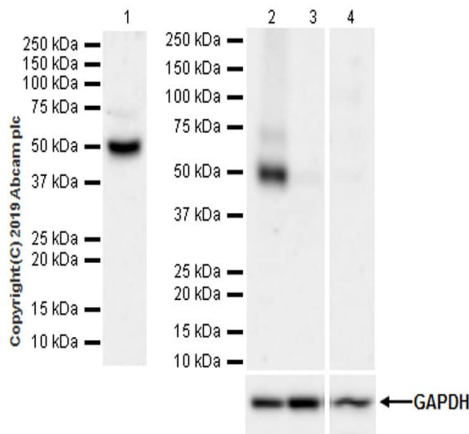
Developed using the ECL technique.

Predicted band size: 61 kDa

Exposure time: 6 seconds

Blocking and dilution buffer: 5% NFDm/TBST.

This blot was developed using a higher sensitivity ECL substrate.



Western blot - Anti-Heparanase 1 antibody
[EPR22365-230] (ab254254)

All lanes : Anti-Heparanase 1 antibody [EPR22365-230] (ab254254) at 1/1000 dilution

Lane 1 : HeLa (human epithelial cell line from cervix adenocarcinoma) whole cell lysate

Lane 2 : Capan-1 (human pancreas adenocarcinoma epithelial cell line) whole cell lysate

Lane 3 : MCF7 (human breast adenocarcinoma cell line) whole cell lysate

Lane 4 : Human pancreas lysate

Lysates/proteins at 20 µg per lane.

Secondary

All lanes : Goat Anti-Rabbit IgG H&L (HRP) ([ab97051](#)) at 1/100000 dilution

Predicted band size: 61 kDa

Observed band size: 50,65 kDa

Blocking and dilution buffer: 5% NFDm/TBST.

Exposure times.


Lane 1: 3 minutes; Lanes 2 -4: 78 seconds.

The expression profile/ molecular weight observed is consistent with what has been described in the literature (PMID: 16458254, 11406531).

Negative control: Human pancreas, MCF7 (PMID: 11406531, 10395325).

This blot was developed using a higher sensitivity ECL substrate.

Why choose a recombinant antibody?



- Research with confidence**
Consistent and reproducible results
- Long-term and scalable supply**
Recombinant technology
- Success from the first experiment**
Confirmed specificity
- Ethical standards compliant**
Animal-free production

Anti-Heparanase 1 antibody [EPR22365-230] (ab254254)

Please note: All products are "FOR RESEARCH USE ONLY. NOT FOR USE IN DIAGNOSTIC PROCEDURES"

Our Abpromise to you: Quality guaranteed and expert technical support

- Replacement or refund for products not performing as stated on the datasheet
- Valid for 12 months from date of delivery
- Response to your inquiry within 24 hours
- We provide support in Chinese, English, French, German, Japanese and Spanish
- Extensive multi-media technical resources to help you
- We investigate all quality concerns to ensure our products perform to the highest standards

If the product does not perform as described on this datasheet, we will offer a refund or replacement. For full details of the Abpromise, please visit <https://www.abcam.cn/abpromise> or contact our technical team.

Terms and conditions

- Guarantee only valid for products bought direct from Abcam or one of our authorized distributors