

# Anti-Hemoglobin subunit alpha antibody [EPR3608] ab92492

**重组** RabMAb

★★★★★ **2 Abreviews** **23 References** **10 图像**

### 概述

产品名称	Anti-Hemoglobin subunit alpha抗体[EPR3608]
描述	兔单克隆抗体[EPR3608] to Hemoglobin subunit alpha
宿主	Rabbit
特异性	This antibody gave a positive signal in Western blotting of rat brain, heart, kidney and spleen tissue. This antibody works in human, mouse and rat in IHC.
经测试应用	<b>适用于:</b> WB, IHC-P <b>不适用于:</b> Flow Cyt or IP
种属反应性	<b>与反应:</b> Mouse, Rat, Human
免疫原	Synthetic peptide corresponding to Human Hemoglobin subunit alpha aa 50-150. (Peptide available as <b>ab206105</b> )
阳性对照	K562 cell lysate, human heart lysate, human spleen tissue, human stomach cancer tissue, human lung tissue, human placenta, rat heart lysate, mouse spleen lysate and mouse cerebral cortex.
常规说明	This product is a recombinant monoclonal antibody, which offers several advantages including: <ul style="list-style-type: none"> <li>- High batch-to-batch consistency and reproducibility</li> <li>- Improved sensitivity and specificity</li> <li>- Long-term security of supply</li> <li>- Animal-free production</li> </ul> For more information <b><a href="#">see here</a></b> . Our RabMAb <sup>®</sup> technology is a patented hybridoma-based technology for making rabbit monoclonal antibodies. For details on our patents, please refer to <b><a href="#">RabMAb<sup>®</sup> patents</a></b> .

### 性能

形式	Liquid
存放说明	Shipped at 4°C. Store at +4°C short term (1-2 weeks). Upon delivery aliquot. Store at -20°C. Avoid freeze / thaw cycle.
存储溶液	pH: 7.20 Preservative: 0.01% Sodium azide Constituents: 59% PBS, 40% Glycerol, 0.05% BSA
纯度	Protein A purified

克隆	单克隆
克隆编号	EPR3608
同种型	IgG

## 应用

## The Abpromise guarantee Abpromise™承诺保证使用ab92492于以下的经测试应用

“应用说明”部分下显示的仅为推荐的起始稀释度;实际最佳的稀释度/浓度应由使用者检定。

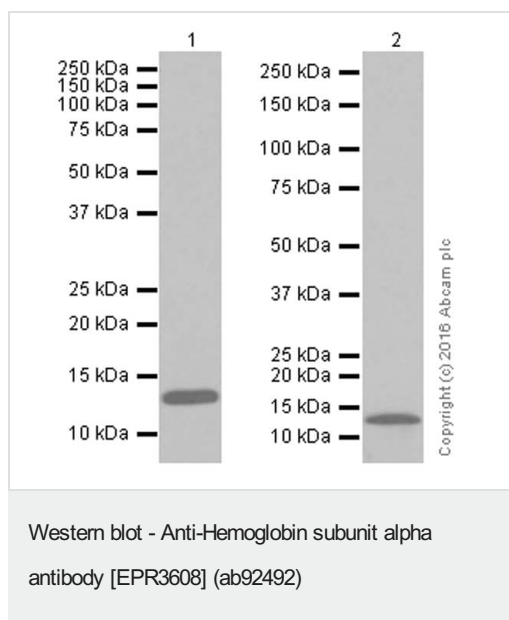
应用	Ab评论	说明
WB		1/1000 - 1/2000. Detects a band of approximately 14 kDa (predicted molecular weight: 15 kDa).Can be blocked with <b><u>Hemoglobin subunit alpha peptide (ab206105)</u></b> .
IHC-P		1/100 - 1/500. Perform heat mediated antigen retrieval via the pressure cooker method before commencing with IHC staining protocol. See <b><u>IHC antigen retrieval protocols</u></b> .

**应用说明** Is unsuitable for Flow Cyt or IP.

## 靶标

功能	Involved in oxygen transport from the lung to the various peripheral tissues.
组织特异性	Red blood cells.
疾病相关	Heinz body anemias Alpha-thalassemia Alpha(0)-thalassemia is associated with non-immune hydrops fetalis, a generalized edema of the fetus with fluid accumulation in the body cavities due to non-immune causes. Non-immune hydrops fetalis is not a diagnosis in itself but a symptom, a feature of many genetic disorders, and the end-stage of a wide variety of disorders. Hemoglobin H disease
序列相似性	Belongs to the globin family.
翻译后修饰	The initiator Met is not cleaved in variant Thionville and is acetylated.

图片



**All lanes :** Anti-Hemoglobin subunit alpha antibody [EPR3608] (ab92492) at 1/2000 dilution (purified)

**Lane 1 :** Human heart lysate

**Lane 2 :** Rat heart lysate

Lysates/proteins at 15 µg per lane.

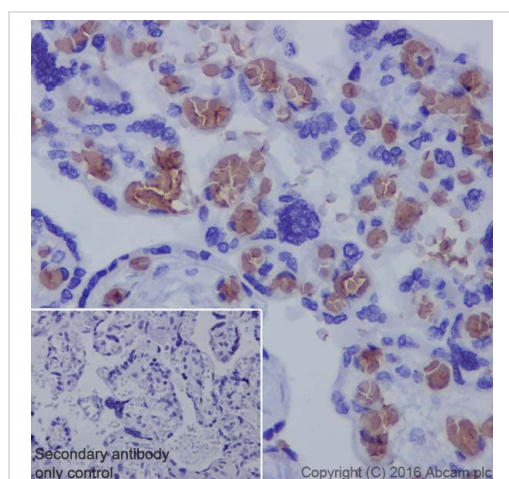
### Secondary

**All lanes :** Anti-Rabbit IgG (HRP), specific to the non-reduced form of IgG at 1/10000 dilution

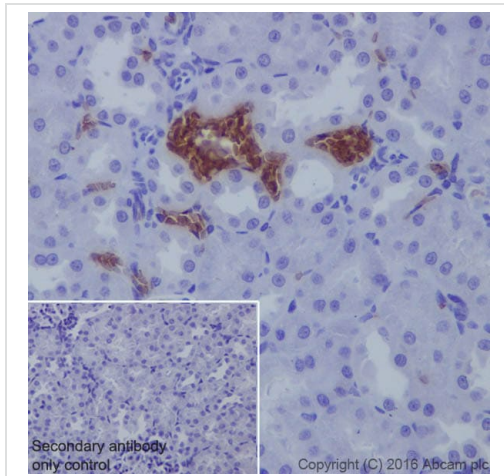
**Predicted band size:** 15 kDa

**Observed band size:** 14 kDa

Blocking and diluting buffer: 5% NFDM/TBST.

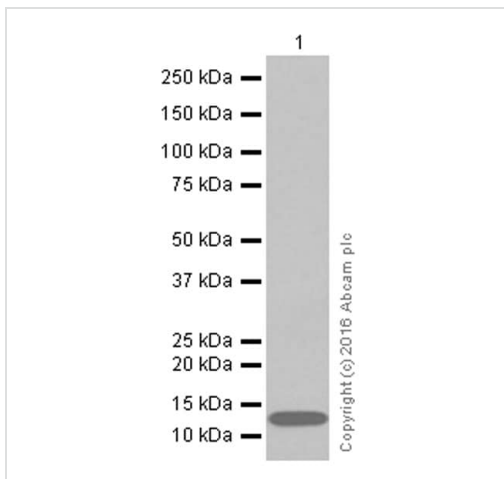


Immunohistochemistry (Formalin/PFA-fixed paraffin-embedded sections) - Anti-Hemoglobin subunit alpha antibody [EPR3608] (ab92492)



Immunohistochemistry (Formalin/PFA-fixed paraffin-embedded sections) - Anti-Hemoglobin subunit alpha antibody [EPR3608] (ab92492)

Immunohistochemistry (Formalin/PFA-fixed paraffin-embedded sections) analysis of rat kidney tissue labeling Hemoglobin subunit alpha antibody with purified ab92492 at 1/500 dilution (1.4 µg/ml). Heat mediated antigen retrieval was performed using EDTA Buffer, PH9. **ab97051**, a HRP-conjugated goat anti-rabbit IgG H&L was used as the secondary antibody at 1/500 dilution. Negative control using PBS instead of primary antibody. Counterstained with hematoxylin.



Western blot - Anti-Hemoglobin subunit alpha antibody [EPR3608] (ab92492)

Anti-Hemoglobin subunit alpha antibody [EPR3608] (ab92492) at 1/10000 dilution (purified) + Mouse spleen lysate at 15 µg

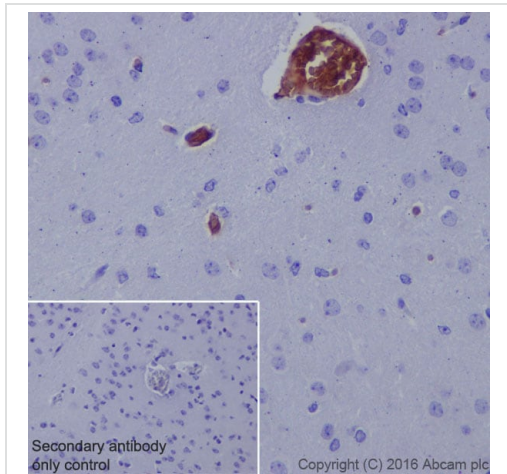
#### Secondary

Anti-Rabbit IgG (HRP), specific to the non-reduced form of IgG at 1/10000 dilution

**Predicted band size:** 15 kDa

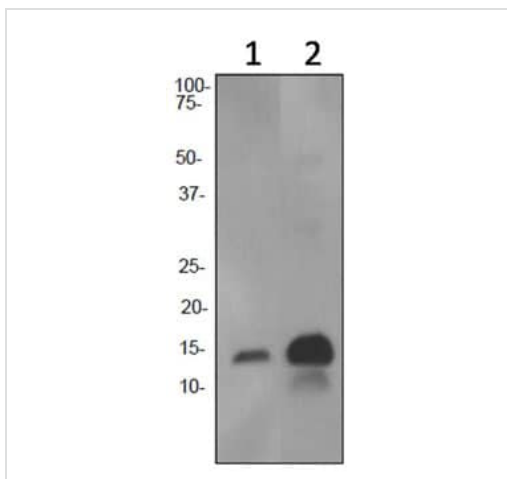
**Observed band size:** 14 kDa

Blocking and diluting buffer and concentration: 5% NFDM /TBST.



Immunohistochemistry (Formalin/PFA-fixed paraffin-embedded sections) - Anti-Hemoglobin subunit alpha antibody [EPR3608] (ab92492)

Immunohistochemistry (Formalin/PFA-fixed paraffin-embedded sections) analysis of mouse cerebral cortex tissue labeling Hemoglobin subunit alpha antibody with purified ab92492 at 1/500 dilution (1.4 µg/ml). Heat mediated antigen retrieval was performed using EDTA Buffer, PH9. **ab97051**, a HRP-conjugated goat anti-rabbit IgG H&L was used as the secondary antibody at 1/500 dilution. Negative control using PBS instead of primary antibody. Counterstained with hematoxylin.



Western blot - Anti-Hemoglobin subunit alpha antibody [EPR3608] (ab92492)

**All lanes :** Anti-Hemoglobin subunit alpha antibody [EPR3608] (ab92492) at 1/1000 dilution (unpurified)

**Lane 1 :** K562 cell lysate

**Lane 2 :** Human heart lysate

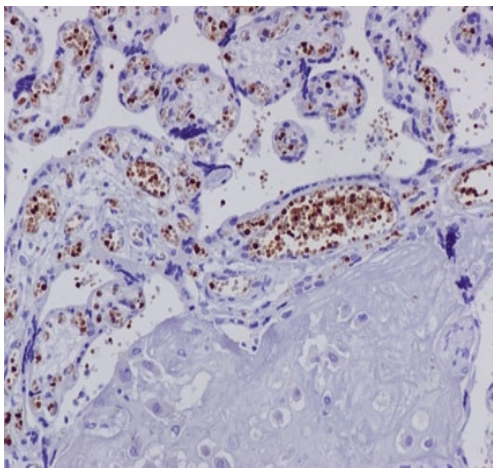
Lysates/proteins at 10 µg per lane.

**Secondary**

**All lanes :** HRP labelled goat anti-rabbit at 1/2000 dilution

**Predicted band size:** 15 kDa

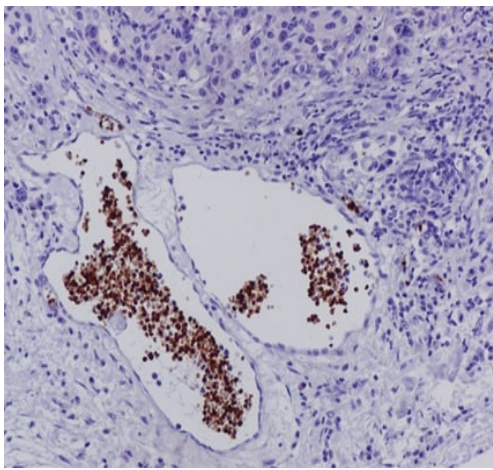
**Observed band size:** 14 kDa



Immunohistochemistry (Formalin/PFA-fixed paraffin-embedded sections) - Anti-Hemoglobin subunit alpha antibody [EPR3608] (ab92492)

Immunohistochemical analysis of paraffin embedded human placenta tissue labeling hemoglobin subunit alpha with unpurified ab92492 at 0.051  $\mu\text{g/ml}$  (1:40000 dilution).

Perform heat mediated antigen retrieval via the pressure cooker method before commencing with IHC staining protocol.

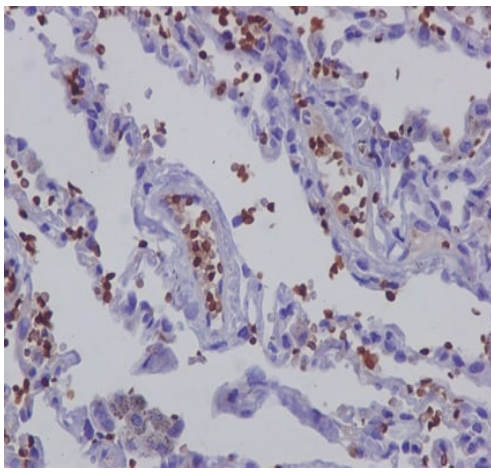


Immunohistochemistry (Formalin/PFA-fixed paraffin-embedded sections) - Anti-Hemoglobin subunit alpha antibody [EPR3608] (ab92492)

Immunohistochemical analysis of paraffin embedded human stomach cancer tissue labeling hemoglobin subunit alpha with unpurified ab92492 at 0.051  $\mu\text{g/ml}$  (1:40000 dilution).

Perform heat mediated antigen retrieval via the pressure cooker method before commencing with IHC staining protocol.



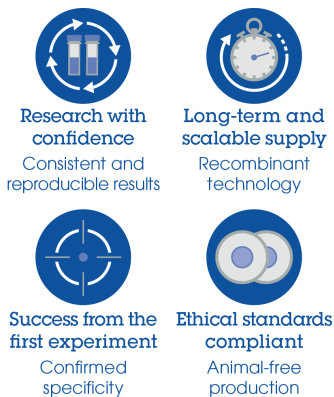


Immunohistochemistry (Formalin/PFA-fixed paraffin-embedded sections) - Anti-Hemoglobin subunit alpha antibody [EPR3608] (ab92492)

Immunohistochemical analysis of paraffin embedded human placenta tissue labeling hemoglobin subunit alpha with unpurified ab92492 at 0.051 µg/ml (1:40000 dilution).

Perform heat mediated antigen retrieval via the pressure cooker method before commencing with IHC staining protocol.

#### Why choose a recombinant antibody?



Anti-Hemoglobin subunit alpha antibody [EPR3608] (ab92492)

**Please note:** All products are "FOR RESEARCH USE ONLY. NOT FOR USE IN DIAGNOSTIC PROCEDURES"

#### Our Abpromise to you: Quality guaranteed and expert technical support

- Replacement or refund for products not performing as stated on the datasheet
- Valid for 12 months from date of delivery
- Response to your inquiry within 24 hours
- We provide support in Chinese, English, French, German, Japanese and Spanish
- Extensive multi-media technical resources to help you
- We investigate all quality concerns to ensure our products perform to the highest standards

If the product does not perform as described on this datasheet, we will offer a refund or replacement. For full details of the Abpromise, please visit <https://www.abcam.cn/abpromise> or contact our technical team.

## Terms and conditions

---

- Guarantee only valid for products bought direct from Abcam or one of our authorized distributors